

The Allegheny News



**Allegheny Society of American Foresters
Fall 1993**

Professional
Management of Pine
and Hardwood Forests
in Pennsylvania, Maryland,
Delaware and Virginia
for Quality
Paper Manufacture.



THE SIGN OF GOOD FORESTRY

The Glatfelter Pulp Wood Co.

Spring Grove, Pennsylvania • Telephone (717) 225-4711

FIELD OFFICES:

Carlisle, Pennsylvania

Fredericksburg, Virginia

Salisbury, Maryland

The Allegheny News

Volume 2, No. 4

The official publication of the Allegheny Society of American Foresters. Published four times annually: January, April, July and October. Subscription rates included in the annual Allegheny Society dues.

Editor

Jack Winieski

Layout

Catherine Winieski

Table of Contents

Chairman's Corner	1
Northern Hardwoods Sponsors Student	2
WV Division Actively Intervening.....	2
1993 Summer Meeting	3
NJ Elwood B. Moore Student Award	3
Allegheny SAF Candidates for Office	4
Allegheny SAF 1994 Election Ballot	5
Allegheny SAF Election Ballot Self-Mailer	6
PA Division Election Ballot Self-Mailer	7
PA Division SAF 1994 Election Ballot	8
Plateau and N. Hardwoods Chapter Meet	9
Keystone Chapter Walks in the Woods	9
Heather Gracie Runs for a Friend	10
Wildflower Calendar Available	10
Kicking Off the New PLT Curriculum in PA	11
Coming Events	12
Allegheny SAF Committee Chairs	12
Allegheny SAF Chairs, Executive Committee & Division Chairs	Inside Back Cover
Your One Vote	Back Cover

*This issue of The Allegheny News is
printed on paper donated by
The Glatfelter Pulpwood Company*

Cover Photograph

Heart's Content Natural Area on the Allegheny National Forest in Northwestern Pennsylvania: "One sound-bite of beauty in the ever-changing forest community" (see page 9)

Photo by Jack Winieski



Words that IMPACT!

Foresters tend to speak and write using old and tried terms such as "board feet," "acres," and "silviculture." Oh I know, we love those comfortable words, but face it... the average non-forester's eyes glaze over and a state of semi-consciousness is reached within five minutes of that kind of talk. Our worthy adversaries, on the other hand, come up with such attention-grabbers as "ancient forests," "pristine streams," and "sustainable forestry" ("sustainable" implying that what we've done in the past is non-sustainable, short-termed, narrowly focused pillage). To be against their warm and cuddly terms would make a mass-murderer look benign in comparison.

I purpose we beat them at their own game. Instead of talking about so-many million board and cubic feet or acres tied up by the northern spotted owl (like the national debt, none of us can visualize astronomical figures), we indicate how many "owl-killed" homes will not be built for young American families. Point out that the acres to be set aside would make a strip of timber four miles wide clear across the U.S., or that the "owl reservation" is larger than the area we designated as reservations for all of our native Americans.

Using impact words is not the same thing as changing definitions as frequently practiced in the political arena. It takes a citizen with an IQ barely above that of a road-side possum to recognize that "government investments" and "shared sacrifice" really means taxes. That is not our game. We must present the facts, but make them interesting and meaningful.

If we don't get our message out in a manner that John Q. Public will actually hear, the mining, agriculture, and forest industries are going down the tubes. I'm told the BAF-10 prism has some wonderful mystical properties when used as a crystal ball. Perhaps we can all meditate and chant with our new age friends while we starve and freeze. ♪

*Harry V. Wiant, Jr., Chairman
Allegheny Society of American Foresters*

Members and Views



Candi Thomas seen here receiving instruction in the safe operation of a shotgun by Susquehannock Forester **Bill Pohopin**.

Northern Hardwoods Chapter Sponsors Student

by Roy Siefert

The Northern Hardwoods Chapter SAF sponsored **Candi Thomas** (daughter of SAF member **Jim Thomas**) at the Potter County Conservation School held August 1-7, 1993. Candi was one of 20 students, boys and girls aged 13 - 16 years, sponsored by local organizations at the week-long camp this year. In operation since 1980, the school is sponsored by the Black Forest Conservation Association of Coudersport, PA. Foresters from the PA Bureau of Forestry Susquehannock District were among those who assisted in the hands-on instruction.

During the week, the students are exposed to a wide variety of environmental disciplines and the hunting and fishing sports. Topics include: forestry and wildlife management, stream and wetlands surveys, and problems with landfills, recycling, and mining. They also receive personalized training in the safe use of firearms and archery equipment.

The Northern Hardwoods Chapter members take pride in sponsoring students over the years as well as acting as instructors at the school. Candi thanks the members for the hands-on learning experience afforded her. She feels, "everyone should go ... they don't just teach you about fly fishing, stream surveying, firearms and archery skills, they let you do these things on your own!"

In a vote by camp students, Candi received the "Spirit" award for the week at camp. ♠

WV Division Actively Intervening

The WV Division is seeking intervenor status in several new appeals made with regard to the management of the Monongahela National Forest. Intervening in the "Stillwell Opportunity Area" appeal, the Division ad-hoc committee forwarded their report to the Regional Forester. The Regional Forester upheld the Stillwell Opportunity area proposal and the appellant did not challenge the decision in the courts.

The intervening ad-hoc committee report has also been sent to the Regional Forester on the Douthat Creek Opportunity Area appeal on the Marlinton Ranger District; the Star Run Project appeal on the Potomac Ranger District has been assigned to ad-hoc committee members **Joe Tekel**, **Joe Grahame**, and **John Vallelogna** by Chair **Dave Lilly** for review.

In regards to a court petition for injunction to halt a 1000M bdf sale on the Kumbrabow State Forest reported in the Charleston Gazette and other newspapers, the Division again responded in a professional manner. The **Executive Committee** replied to each of the editors, explaining who they are, and the management goals of the State Forest System (i.e. different from that of Parks and Wildlife). They further pointed out, among other things, that the areas under question, "... have only reached their showcase condition because of the thorough protection and management provided by the professional staff." The judge in the case issued a temporary injunction and referred the case to another judge for in-depth consideration.

Hats off to the balanced activism shown by the West Virginia Division members! ♠

Send in your Convention Registration for the National SAF Meeting TODAY!

See you in Indianapolis, November 7-10

Frederick J. Harris Forest Resources Consultant

Management • Sales
Appraisals

Specializing in Timberland Management for Private Landowners

1700 Maple Avenue
Shamokin, Pennsylvania 17872
Phone (717) 648-6917



1993 Summer Meeting

by Jack Winieski

Allegheny SAF members and families who attended the '93 Summer meeting, August 12 and 13, found a relaxed and working environment at the Seven Springs Resort and Conference Center in southwestern PA. The Western Gateway Chapter, **Craig Ostheim, Pat Hill, and committee members**, provided an interesting field trip followed by an appropriate slate of presentations in the conference room (4 Category I CFE credits). Congratulations from the 52 members in attendance!

Consulting forester **Bob McColly** conducted a bus field trip around the complex of forest land interspersed with ski slopes, and other recreational developments, discussing the various timber, and wildlife management practices of this family ownership.



Ribs, chicken, corn on the cob, etc. - excellent food and fellowship on the evening of the 12th, was provided at the picturesque "Lake Tahoe" portion of the resort - a chance for members to renew acquaintances and discuss the issues to be covered in the indoor sessions the next morning.

Forest Soil Acidification on the Laurel Hill (**Dr. William Sharpe**), The New Forest Licensing Law in Maryland (**Tunis Lyons**), The Status of Pennsylvania's Forester Registration Activity (**Don Oakes**), PA Landowner's Association Report on Legislative Matters - and More (**Kieth Klinger**), and a Discussion of the SAF Task Force Report on "Sustained Long-term Forest Health and Productivity" (**Lawrence Hill**) were the topics that filled the half-day indoor program. Following the technical (and informational) presentations, **Dwight Fielder**, and **Bill Shands**, two of the three candidates (**Calvin F. Bey** is the third) running for the District VII Council position, made short statements relative to their philosophies regarding SAF and their reasons for wanting to serve the Society. Δ

NJ Elwood B. Moore Student Award Presented



Erica L. Burbott, above right, a recent graduate of the Natural Resources Management - Forestry curriculum at Rutgers University, receives the Elwood B. Moore Award from NJ Division SAF Secretary/Treasurer **Christina Harrigan**.

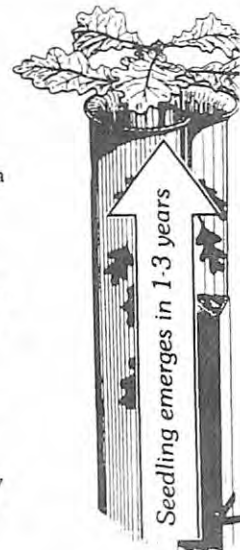
The Elwood B. Moore Award is given by the NJ Division, to a student at Rutgers University for his or her "accomplishments, leadership, and extracurricular forestry activities; demonstrating through these actions the spirit of professional forestry." Δ

Stop Losing Seedlings To Animals, Wind, & Drought

Seedling trees need two things:
Protection and water.
TUBEX Treeshelters give them both.

A 4 foot TUBEX keeps a 12 inch seedling safe from animals, sprays, and machines. It also captures moisture, like a mini-greenhouse. That increases survival and speeds growth.

Call today for a FREE catalog. Written by foresters, it explains how TUBEX will make *your* planting a success.



CALL FOR NEW
LOWER PRICES!

1-800-24TUBEX
(1-800-248-8239)

tubex®

Box 7097 Riverview Station, St. Paul, MN 55107

Allegheny SAF 1994 Candidates for Office

Detach and mark the appropriate ballot(s) found in the centerfold of this *Allegheny News*. Fold, seal, stamp and mail by November 15, 1993. Your vote does count!

Chairman Elect:

Kaden, Timothy A. Forestry Supervisor, Delaware Department of Agriculture - Forestry, Dover, DE. B.S. Forest & Range Management, Utah State University; A. S. Forestry Science, North Dakota School of Forestry. Member of the Governor's Land Acquisition Team, Eastern States Representative on the National Wildfire Coordinating Group Training Team & trainer for western firefighting crews, Delaware & Mid-Atlantic area. Taught "Introduction to Forestry" at The University of Delaware. SAF member since 1970; served as Sec/Treasurer, vice-chair, and chair, MD/DE Division; member of the Allegheny Executive Committee; chaired the Allegheny Education Endowment Fund Committee, raising \$10,000. Presently completing third term as Allegheny SAF Sec/Treasurer. Member of the Forest History Society, Great Northern Railway Historical Society, Delaware National Estuarine Research Reserve, and a member of St. John's Lutheran Church.

Secretary/Treasurer:

Brown, Mike State Forest Manager, Delaware Department of Agriculture - Forestry, Dover, DE. B.S. Wildlife Resource Management, West Virginia University, 1981. Formerly State APAIRIST and Service Forester with Delaware Forest Service on the Blackbird State Forest. Held seasonal positions with Dept. of Natural Resources Environmental Conservation (DNREC), Division of Parks and Recreation, and Fish and Wildlife. SAF members since 1985. Member of Delmarva Forestry Association, Wildlife Society, Rocky Mountain Elk Foundation (RMEF), and National Bowhunter Foundation.

Executive Committee:

Gallace, Elizabeth H. Procurement Forester, Appleton Papers Inc., Roaring Springs, PA. B.S. Forest Science, Penn State University. Procures all roundwood and chips for pulp mill's requirements; relief woodyard supervisor. PA State Tree Farm Chair, Tree Farm Inspector, Editor of PA Tree Farm Newsletter; SW PA Sawmillers & Loggers Safety Field Day Chair; Member of PA Forestry Association Industrial Committee, Project Learning Tree State Steering Committee and Facilitator, PA Stewardship Committee. Allegheny SAF Executive Committee incumbent, member of the Rothrock Chapter and Xi Sigma Pi National Honor Society.

Gottschalk, Kurt W. Research Forester, USFS Northeastern Forest Experiment Station Insect & Disease Research Unit, Morgantown, WV.

B.S. Forestry, Iowa State University, M.S. & Ph.D Silviculture, Forest Ecology & Tree Physiology, Michigan State University. Also Project Leader of Silvicultural Options for the Gypsy Moth. Member SAF since 1974; Chair C6 Physiology Technical Working Group, Allegheny SAF Research & Forest Entomology & Pathology Committees, and incumbent Executive committee member. Secretary of the Forest Ecology Working Group and active member of a number of other professional societies.

Higgins, Earl A. Assistant Program Specialist, PA Bureau of Forestry - Division of Forest Fire Protection, Harrisburg, PA.

B.S. Forestry, Penn State University, Continuing Education, Teaching Certificate Altoona PA. Staff Forester and Assistant District Forester, 1968-88. Current PA SAF Division Chair; membership in the PA Forestry Association, Genealogy Society of America; Project Learning Tree Facilitator, and local Riverside Crime Watch block Co-captain. Interested in wildflower and landscape photography, forest history, American Indian lore, and sports - especially the Pittsburgh Pirates and Steelers.

Steiner, Kim C. Professor of Forest Biology, Penn State University, State College, PA. B.S. in Forest Biology, Colorado State University, M.S. & Ph.D in Forest Genetics, Michigan State University. Previous employment with the USFS and Army Adjutant General. Currently Interim Director of the School of Forest Resources at Penn State. A member of SAF since 1970; founder of the first-ever student chapter of SAF, Chair of the Rothrock Chapter, the Allegheny SAF Tree Improvement & Student Coordinating Committees and organizer of the 1992-93 Student Quiz Bowls at the winter meetings.

(Biographies continued)

Webb, Mark R. Consulting Forester and Partner in Nagy & Webb, Union City, PA.

B.S. Forest Management, Penn State University. Previous employment in Senior Forester & Land Manager positions with lumber companies in PA & NY. Chair of Penn Chapter of the Association of Consulting Foresters of America, Inc., Chair of SAF Plateau Chapter and PA Division. Member of Joint Chapter Deer/Regeneration Committee in NW PA. Incumbent Allegheny SAF Executive Committee member. Secretary, Union City Lions Club, Chair of Union City Memorial Hospital Foundation & Vice-Chair of Union City Memorial Hospital Board of Trustees, Ethics & Personnel Committees. Member Union City First United Methodist Church, being active in vocal and handbell choirs, and Sunday school.

Woods, Lillian V. District Conservationist, USDA Soil Conservation Service, Cumberland, MD. B.S.

Agriculture, Range Management Option, Kansas State University & M.A. Management, Webster University. Employment as Range Conservationist, USFS, Hot Springs, SD; Soil Conservationist, USDA SCS Leavenworth, KS & St. Cloud, MN. SAF member since 1987, attending two National SAF and five Allegheny Section Meetings. Past Secretary North Central Society for Range Management; member of Association of Women Soil Scientists, developed their 1993 membership brochure, and a regular contributor to the newsletter.

— — — —
Fold here

— — — —
Fold here

Allegheny Society of American Foresters 1994 Election Ballot

Report of the Nominating Committee
Robert LaBar, Chair

Chairman Elect ___ Tim Kaden (MD/DE)

Secretary Treasurer ___ Mike Brown (MD/DE)

Executive Committee (Vote for four , but no more than two from one state)

— — — —
Fold here

___ Elizabeth Gallace (PA)*

— — — —
Fold here

___ Kurt Gottschalk (WV)*

___ Earl Higgins (PA)

___ Kim Steiner (PA)

___ Mark Webb (PA)*

___ Lillian Woods (MD/DE)

*Incumbent

Return marked ballot by November 15, 1993. Fold on designated lines, seal, stamp, and mail (self-mailer).

Pennsylvania Division SAF 1994 Candidate Biographies

Chair Elect:

Haulik, Wallace ("Wally") Chief, Div. Forest Fire Protection, PA Bureau of Forestry.
B.S. Forestry, Penn State University, M.S. Public Administration, Shippensburg University. Former Section Chief, Div. State Forest Management in the PA Bureau of Forestry. First Lieutenant with the U.S. Army Corps of Engineers. Member of the PA Forestry Association, the PA Wildlife Federation, and a charter member of the Northern Hardwoods Chapter SAF.

Kane, Kenneth C. Consulting Forester, Keith Horn, Inc., Consulting Foresters.
B.S. Forestry, Penn State University. SAF activities: Chair & past Chair, Northern Hardwoods Chapter, member joint Northern Hardwoods/Plateau Chapters Deer/Forest Regeneration Committee. Research Technician on state-wide acid deposition monitoring project, Penn State; Assistant Manager, Hardwood Concentration Yard, Baille Lumber Co. Active in numerous Kane, PA organizations involved in community service.

— — — —
Fold here

— — — —
Fold here

Secretary/Treasurer:

D'Amore, Douglas Program Specialist, Division of State Forest Management, PA Bureau of Forestry.
A.A.S. Degree, SUNY College of Environmental Science & Forestry, B.S. Forestry, University of Michigan. Previous seasonal employment with the USFS; Forestry Consultant staff forester; procurement forester, and Service Forester with the PA Bureau of Forestry. Past Secretary/Treasurer, Valley Forge Chapter SAF, and Arrangements Co-chair for the 1992 Winter SAF Meeting.

Pennsylvania Division Society of American Foresters 1994 Election Ballot (PA Division Members Only)

Report of the Nominating Committee
Earl Higgins, Chair

— — — —
Fold here

— — — —
Fold here

Chair Elect - (a two year position, assumes the Chair position in two years)
Vote for one

_____ Haulik, Wallace "Wally" - (Keystone Chapter)

_____ Kane, Kenneth, C. - (Plateau Chapter)

Secretary Treasurer - (a two year position)

_____ D'Amore, Douglas - Keystone Chapter)

Return marked ballot by November 15, 1993. Fold on designated lines, seal, stamp, and mail (self-mailer).



Jack Winieski, Paul Klocko, and Russ Walters examine a red oak nursery seedling after two years in a five foot tree shelter.

Plateau and Northern Hardwoods Chapters Meet

Old age, the Beech Bark Disease, and deer pressure combine to make the Hearts Content area on the Allegheny National Forest an interesting study lab. That's exactly what **Chris Nowak** of the Buckaloons Lab is doing, and his study was one of the "show-me" trips of the joint meeting of about 60 members and guests of the Plateau and Northern Hardwoods SAF Chapters, July 15th. There has been a 25% loss of biomass in the recent past, mostly in beech and older white pine, and the deer pressure on regeneration has led to the loss of shade intolerant seed sources - "loss of opportunities" according to Chris.

The other studies viewed and discussed were three tree shelter experiments. **Russ Walters** and **Riva Duncan** presented field progress reports on red oak nursery seedlings and natural tree seedlings after two years in tree shelters; **Charlie Crothers** reported his tests with red oak acorns in tree shelters. **Paul Klocko** of "Tubex" added to the thorough on-site discussion of state-of-the-art use of tree shelters in the Allegheny experiments and elsewhere.

The day ended with a delicious chicken barbeque and the usual fellowship that goes with a "good" day in the woods. ♠

Keystone Chapter Walks in the Woods

Scott Kurtzman of the Glatfelter Pulpwood Co. and Allegheny Newsletter Editor **Jack Winieski**, of the Keystone Chapter, took about 60 children and adults for an informational walk through the Northern York School District Forest on August 19, 1993. The occasion was in conjunction with the Annual "Heritage Day" activities sponsored by the Northern York County Historical and Preservation Society (Jack is President of NYCHAPS).

The Glatfelter Pulpwood Company had made a selective cut on the forest in 1991, removing about



Scott Kurtzman leads an "uneven aged" group of Heritage Day participants through the School Forest.



Forestry Students from the Penn State Mt. Alto Campus demonstrate their woodsmen skills.

41M bdf of logs and about 600 tons of raw material for pulping. The resulting growth of stump sprouts and seedlings of trees, lesser vegetation, and ground cover plants under the residual stand provided the opportunity to explain many concepts related to forest management practices. Questions and comments were at all levels from children and adults - both Scott and Jack agreed that it was a rewarding experience for them, with many favorable comments from the "walkers".

Forestry students from the Penn State Mt. Alto Campus were also in attendance at the Heritage celebration, exhibiting their skills at woodsmen events, keeping the crowd spellbound with their cross-cut sawing and speed chopping (the crosscut crew beat the chain saw cut through a 13 in. tulip poplar log). This is the second year for both the forestry student's demonstration and a walk in the school forest. ♠

Nelson Paint Marks Remain To Be Seen

Bright, highly visible paint marks that do not require remarking. Paint marks that can be applied in any weather . . . rain or snow, hot or cold. Marks made with lead free, non-toxic, ozone friendly paints specially formulated for tree, log and boundary marking.



Marks made with special tools, such as the paint-can-gun for spot marking trees, the paint hammer for end marking logs, the aerosol can for marking spots, bands, numbers and letters, and the paint-tube-pen for marks requiring extreme durability. Nelson Marking Paints and Paint Marking Tools can be purchased from leading forestry suppliers or the Nelson facility nearest you.

The Nelson Paint Company

KINGSFORD, MICHIGAN 49802, P.O. BOX 2040,
TEL.: 1-800-236-9278, FAX: 1-906-774-4264.
MONTGOMERY, ALABAMA 36108, P.O. Box 9329,
TEL.: 1-800-443-1750, FAX: 1-205-834-6397.
McMINNVILLE, OREGON 97128, P.O. Box 402,
TEL.: 1-800-869-2629, FAX: 1-503-472-4275.

ORDER DIRECT TODAY!

Wildflower Calendar Available

A Russian emigre, Andrey Avinoff, was a lepidopterist and an artist, as well as Curator of Entomology and later Director of the Carnegie Museum in Pittsburgh, PA. In the flowering seasons of 1941-42, he and Otto Jennings, Curator of Botany at the Museum, collaborated on the monumental task of illustrating the wildflowers of western PA. The result of their efforts was 296 watercolors, illustrating 351 native or naturalized wildflowers.

Twelve of these selected watercolors grace the calendar of the Western PA Conservancy for 1994. The Conservancy offers these calendars, with the traditional listing of places to go and interesting facts about the natural world, to anyone interested. Order from: Western PA Conservancy, 316 Fourth Ave., Pittsburgh, PA 15222, \$6.36 each post paid. ♠

Heather Gracie Runs for a Friend



When Heather Gracie, Chair of NJ Division SAF, runs a marathon, she has a lot on her mind: her pacing, strategy, surroundings, and fellow runners. But in June, when she ran in the 17th Annual Grandma's Marathon in Duluth, MN, she was thinking of her late friend and colleague, Tom Brokaw. Mr. Brokaw, who owned a logging business in Whitehouse Station, was killed in a logging accident in February.

"Besides the professional connection, Tom was an athlete, interested in softball and other sports - in people and the fire company. I just thought the marathon run was one thing I could do in his memory," said Heather. Proceeds from the run will add to the Tom Brokaw Memorial Scholarship Fund at Hunterdon Central High School. Awards from the fund will go to students committed to the study of forestry and conservation.

By the way, Heather is not a Grandmother... the 17th Annual Grandma's Marathon derives its name from an old inn on Lake Superior.

On Arbor Day 1994, a tree planting ceremony on the Hunterdon Central High School grounds will commemorate the memory of Tom Brokaw. ♠

Kicking Off the New PLT Curriculum in Pennsylvania

Pennsylvania's PLT retooling of current and new facilitators took place in two training sessions held this summer in anticipation of the fall rush for workshops. McKeever Environmental Center in western PA and Harrisburg Community College in east-central PA were the sites for the two and one-half day sessions. Over 40 of the participants were foresters and resource professionals from federal and state government, universities, industry, and the consulting sector.

Experienced facilitators were mixed with new-comers in hopes that a mentor/mentee relationship would assist training and in some cases continue into workshop presentations. PA PLT co-coordinators **Patti Vathis** and **Bob Merrill** organized the retraining to familiarize facilitators with the newly rewritten national curriculum. Several seasoned facilitators acted as workshop leaders in presenting activities in the new format emphasizing process and product outcomes. The new PLT format fits the mandated Outcome Based Education (OBE) requirements for environmental education mandated in Pennsylvania this year.



Bob Merrill (seen in the doorway) directs PLT Activity #22, "Trees as Habitats."

Kathy McGlaulin, Vice-President for Education from the American Forest and Paper Association (AFPA), headquartered in Washington, DC, participated in the Harrisburg training. The AFPA along with the Western Regional Environmental Education Council jointly sponsor the international environmental education Project Learning Tree program. Other states in the Allegheny SAF, and across the U.S., are in the process of retraining their facilitators with the new PLT curriculum.

Smokey Bear presented first-time awards to facilitators for their contribution to the success of PA PLT since its revival in 1987: **Jo Anne Albert, Tom Birch, Karen Boyle, Dan Dziubek, Dave Gregg, John Miller, Mike Palko, John Sidelinger, Dean Steinhart, Jack Winieski, and Rich Wood** received framed certificates from Smokey on the occasion of his 50th birthday. He celebrated by cutting an appropriately decorated cake, but refused to eat any.

Dr. Donald Clark, Director of Curriculum and

Academic Services for the PA Department of Education, spoke to the group about the mandated environmental education amendment to Chapter 25 of the PA Code, and praised PAPLT for the leadership shown in providing workshops for an average of about 3,000 teachers and youth leaders annually. Δ



Rich Wood, Chester County Parks and Recreation Department, taking some of the facilitators through a hands-on outdoor activity.

**FINISHED WITH THIS ISSUE?
HAND IT TO A NON-MEMBER WITH AN
INVITATION TO JOIN SAF!**

QUALITY EVERGREENS AND HARDWOODS



NORTHERN GROWN SEEDLINGS & TRANSPLANTS

Pine: Scotch, Austrian, Red, White, Ponderosa, Japanese Black, Mugho
Spruce: Blue, White, Norway, Black Hills, Serbian
Hemlock: Canadian
Fir: Balsam, Concolor, Fraser, Douglas
Oak: White, Pin Red, Shingle
Maple: Silver, Norway, Sugar, Red
Locust: Black, Honey, Bristly

WRITE FOR OUR PRICE LIST • P.O. BOX 340

**Musser
Forests inc.**

DEPT
85L

Indiana
PA. 15701
412/465-5685

Coming Events

October 1993

- 16 The Maryland Forest Festival, Anne Arundel County Fairgrounds, sponsored by the MD Forestry Association, Jack Perdue (410) 827-5631 or Ed Yates (301) 934-1240.

November 1993

- 3 MD/DE SAF Winter Meeting, Sandy Cove, election of officers and "Sustaining Long-term Forest Health" video and discussion.
- 7-10 1993 National SAF Meeting, Indianapolis, Indiana, W.L.Mills (317) 494-3575. Send in your registration *NOW!*
- 12-13 1993 MD Forestry Association Annual Meeting, Tremont Plaza Hotel, Baltimore, MD. Susan Reinhart, (410) 893-7215.

February 1994

- 9-12 1994 Allegheny SAF Winter Meeting, "Forestry Today: the Myth and the Magic," Turf Valley Hotel, Ellicott City, MD.

Allegheny Society of American Foresters Committee Chairs

Auditing

Jim Olson
R.D. #4, Box 354
Georgetown, DE 19947
(o) 302-856-1863
(h) 302-398-4307

Awards

Anthony Mollish
P.O. Box 577
Rupert, WV 25984
(o) 304-392-6373
(h) 304-647-5538

Communications/Education

Charles J. Newlon
2 Irving Lane
Wallingford, PA 19086
(o) 215-975-4111
(h) 215-872-6019

Continuing Forestry Education Coordinator

Kevin O. Donnelly
33 W. Cadem-Wyoming Ave.
Wyoming, DE 19934
(o) 302-739-4411
(h) 302-697-7230

Entomology & Pathology

Kurt W. Gottschalk
USDA Forest Service
Forestry Science Lab
180 Canfield Street
Morgantown, WV 16505
(o) 304-285-1598
(h) 412-324-5331

Fire

John H. Bitzer
R.D. #9, Box 9203
Stroudsburg, PA 18360
(h) 717-992-4174

Forest History

William S. Corlett
51 Fort Street
Lemoyne, PA 17043
(h) 717-737-7118

Forest Research

Bruce B. Breneman
Route 2, Box 36A
Rupert, WV 25984
(o) 304-392-6334
(h) 304-392-5525

Foresters Fund

Ronald J. Sheay
1628 Prospect Street
Trenton, NJ 08638
(h) 609-771-8301

Licensing & Registration

Mark R. Webb
11021 US Route 6
Union City, PA 16438
(o) 814-663-5393
(h) 814-827-1243

Membership

Mark C. Vodak
Dept. of Natural Resources
Box 231
Rutgers University
New Brunswick, NJ 08903
(o) 908-932-1766
(h) 609-418-3585

Natural Areas

James C. Nelson
R.D. #1, Box 862
East Berlin, PA 17316
(o) 717-787-2703
(h) 717-259-7673

Nominations

Robert J. LaBar
Box 1459 Hemlock Farms
Hawley, PA 18428
(h) 717-775-9741

Policy/Legislative

James Roberts
1164 Ramblewood
Annapolis, MD 21401
(o) 301-974-5551

Program

Steve Jones
110 Ferguson Building
Penn State University
University Park, PA 16802
(o) 814-863-0401
(h) 814-867-6884

Student Coordinating

Robert Shipman
Room 209A
Ferguson Guilding
209 Twiggs Lane
State College, PA 16801
(h) 814-466-6511

Tellers

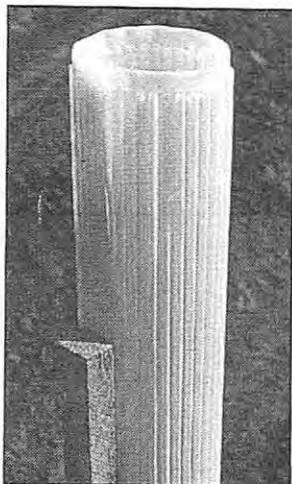
Michael K. Brown
502 Blackbird Forest Road
Smyrna, DE 19977
(o) 302-653-6505
(h) 302-659-0218

Tree Improvement

Kim C. Steiner
Forest Resources Lab
University Park, PA 16802
(o) 814-865-9351

TREE PROTECTORS

*Which is best?
Which is most efficient?*



The health of your trees depends on getting accurate information.

**NEW TOP
DESIGN!**

Call today for your Free Sample and a copy of a comparison study by the Pennsylvania Bureau of Forestry.

TREE PRO

445 Lourdes Lane • Lafayette, IN 47905
800-875-8071 or 317-463-1011

Allegheny Society of American Foresters

Officers

Chairman
Harry V. Wiant, Jr.
Division of Forestry
West Virginia University
Box 6125
Morgantown, WV 26506
(o) 304-293-3411
(h) 304-599-6618

Chairman-Elect
Mark C. Vodak
Dept. of Natural Resources
Box 231
Rutgers University
New Brunswick, NJ 08903
(o) 908-932-1766
(h) 609-418-3585

Secretary/Treasurer
Timothy A. Kaden
Green Winged Trail
Camden, DE 19932
(o) 302-739-4811
(h) 302-697-7066

Past Chairman
Robert J. LaBar
Box 1459 Hemlock Farms
Hawley, PA 18425
(h) 717-775-9741

Executive Committee

Kevin O. Donnelly
33 W. Cadem-Wyoming
Wyoming, DE 19934
(o) 302-739-4411
(h) 302-697-7230

Betsy H. Gallace
Appleton Papers, Inc.
100 Paper Mill Road
Roaring Spring, PA 16673
(o) 814-224-2131
(h) 814-944-7989

Mark R. Webb
11021 US Route 6
Union City, PA 16438
(o) 814-663-5393
(h) 814-827-1243

Kurt W. Gottschalk
USDA Forest Service
Forestry Science Lab
180 Canfield Street
Morgantown, WV 26505
(o) 304-285-1598
(h) 412-324-5331

Council Representative

Brian Payne
5211 Mornington Court
Fiarfax, VA 22032
202-205-1571

Executive Director

Jack Winieski
P.O. Box 699
Dillsburg, PA 17019-0699
717-432-3646

Division Chairs

Maryland/Delaware
Terrance W. Clark
Tawes State Office Bldg.
580 Taylor Avenue
Annapolis, MD 21401
(o) 410-974-3675
(h) 410-721-9595

New Jersey
Heather Gracie
P.O. Box 501
Gladstone, NJ 07934
(o) 908-879-4144
(h) 908-781-6547

Pennsylvania
Earl Higgins
3120 North 6th Street
Harrisburg, PA 17110
(o) 717-787-2925
(h) 717-233-0778

West Virginia
David G. Lilly
8 Kepner Street
Buchanon, WV 26201
(o) 304-924-6266
(h) 304-472-1369

Chapter Chairs

Keystone
Thomas R. Wieland
1920 Maraposa Drive
Chambersburg, PA 17112
(o) 717-225-4711
(h) 717-263-1836

North Hardwood
Kenneth C. Kane
115 Ash Street
Kane, PA 16735
(o) 814-837-9391
(h) 814-837-8357

Pinchot
Allen R. Knox
Route #1, Box 30
Milford, PA 18377
(o) 717-296-2909
(h) 717-296-8346

Plateau
Riva Duncan
205 East Street, #2F
Warren, PA 16365-2367
(o) 814-968-3232

Rothrock
Ellen Manno
106 Ferguson Building
University Park, PA 16802
(o) 814-863-0362
(h) 814-234-8157

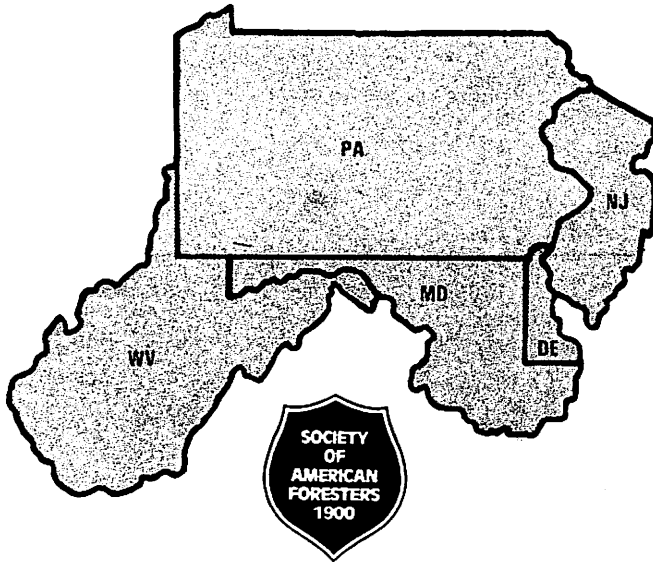
Valley Forge
Thomas W. Birch
508 Penn Avenue
Drexel Hill, PA 19026
(o) 215-975-4045
(h) 215-626-0330

Western Gateway
Craig W. Ostheim
R.D. #4, Box A-219
Ebensburg, PA 15931
(o) 814-472-4018
(h) 814-539-2682

The Allegheny News

Publication of the
Allegheny Society of American Foresters
Jack Winieski, Editor
P.O. Box 699
Dillsburg, PA 17019-0699

NONPROFIT ORG.
U.S. POSTAGE
PAID
HARRISBURG, PA
PERMIT NO. 577



Your One Vote

How important is one vote?

Consider the following:

- In 1645 - One vote gave Oliver Cromwell control of England
- In 1649 - One vote caused Charles I of England to be executed
- In 1776 - One vote gave America the English language - instead of German
- In 1845 - One vote brought Texas into the Union
- In 1868 - One vote saved President Andrew Johnson from impeachment
- In 1876 - One vote gave Rutherford B. Hayes the presidency of the United States
- In 1876 - One vote changed France from a monarchy to a republic
- In 1923 - One vote gave Adolph Hitler leadership of the Nazi Party

And in 1993 we know the importance of single votes in the U.S. Budget process!

SOCIETY OF AMERICAN FORESTERS