

The Allegheny News



Allegheny Society of American Foresters
Spring 2002

This issue of The Allegheny News is printed on paper donated by Westvaco Inc.



MeadWestvaco

*...for the wood and paper products people need
and the forests they want.*

300 Pratt Street ~ Luke, Maryland ~ www.meadwestvaco.com

The Allegheny News

Volume 11, No.1

The official publication of the Allegheny Society of American Foresters. Published four times annually.

Deadline for articles is December 15, March 15, June 15 and September 15. Subscription rate included in the annual Allegheny Society dues.

The mission of the SAF is to advance the science, technology, education, and practice of professional forestry in America and to use the knowledge and skills of the profession to benefit society.

P.O. Box 699 • Dillsburg, PA 17019-0699

Editor: Jack Winieski

Layout: Catherine Winieski Carter

Table of Contents

Chairman's Corner	1-2
Allegheny SAF Golden Members	2
In Memoriam	2
Hornbeck New Editor	2
NJ SAF Forest Health Workshop	3
WVU Students Thank Wilbur Wolf	3
West Virginia Meeting Highlights	4
Councilman's Corner	5
NJ Forestry Foundation Scholarships	6
PA SAF Annual Meeting Minutes	8
Seguin Moreau 2002 Oak Planting	9
Penn State Wins SAF Student Quiz Bowl	9
2001 Allegheny SAF Awards	10-12
2002 Reginald Forbes Art Show Winners	13
Allegheny SAF 2001 Treasurer's Report	14
2002 Summer Meeting Agenda/Registration	15
Allegheny SAF Winter Meeting Photos	16
Executive Committee Meeting Minutes	17-19
General Business Meeting Minutes	19
WVU Student Award Winners	19
Silviculture News	20
Allegheny SAF Diversity Task Force Report	21-23
Coming Events	24
Allegheny SAF Committee Chairs	24
Allegheny SAF Chairs, Executive Committee and Division Chairs	Inside Back Cover

Cover Photo

Quality deer management requires harvesting more large doe and only larger/older bucks.

See Silviculture News article on page 20.

Photo by Shawn Grushecky



Chairman's Corner

By Ken Kane
Allegheny SAF Chair

"What a way to start my term as Chair of the Allegheny SAF!" The Maryland-Delaware Division did a fantastic job planning in hosting a great professional and social meeting at the Clarion Hotel in Hagerstown, MD. It reinforced my pride in peer professionalism within SAF membership.

We started with a difficult executive session. The task of developing a budget was a challenge. However, with many ideas and sacrifices we were able to develop a budget, pursuing existing initiatives while keeping four issues of *The Allegheny News*. The budget included a deficit, but was reduced by a generous donation generated in the later Pennsylvania Division business meeting, and another generous donation from one of our new SAF Fellows, Wilbur Wolf. It is my hope that other divisions and financially successful members will come through to help stabilize immediate Allegheny finances until we devise a more permanent solution.

This financial stability of our society is so basic to our mission, and one of the goals I have set for my 2002-03 term as Chair. In order to accomplish this goal, we will all need to work together. Your Executive Committee has established a sub-committee to investigate means of permanently stabilizing the income side of our annual budget. The committee consists of Bob Bauer, Mike Lester, Kenneth Jolly, Karen Sykes, Jack Winieski, and me. Any help and suggestions you may have should be directed to one of us. The second goal set for my term is to increase our membership. An increase in membership will not only help solve our financial challenges, but will also promote our profession.

Since the first of the year I have had the opportunity to speak to many groups and individuals: several landowner meetings, a class at the University of Pittsburgh Main Campus on forestry matters and I

(Continued on page 2)

Members and News

(Continued from page 1)

have also participated on a panel with Congressman John Peterson from Pennsylvania's 5th Congressional District and Arthur Stewart, Past President of the Allegheny Forest Alliance - making a case for scientific-based multiple use management to anti-timber harvesting environmentalists. I have also had the opportunity to testify before the Pennsylvania Legislature Fish and Game Committee.

My point in mentioning the above contacts is they have confirmed my belief that our publics not only do not understand our profession, they are not hearing us. We know that SAF membership provides a support system and information to help counter lack of, or misinformation in regards to forest management activities. We must all work to convince our non-member peers and co-workers of the opportunities within SAF membership for individual professional growth and better communication with our publics. As individual SAF members, I urge you to take every opportunity, one on one and one on many, to engage our daily public contacts in exchanges of information relative to forestry issues and explain our professional perspective in the best lay terminology and examples possible.

As Allegheny Chair over the next two years, I am excited about serving a great group of dedicated foresters. With your help - and don't wait to be asked, call me at 814-837-9391(o) or 814-837-8357 (home), I'm a good listener - I hope we can meet or exceed our objectives. ☞



New SAF Golden members (left to right) Ed Palpant, Jim Parsons and Jim Nelson with Allegheny Awards Chair, Kenneth Joly

Allegheny SAF Recognizes Nine Golden Members

During the Awards Banquet at the February 27, 2000 Allegheny SAF Winter Meeting in Hagerstown, MD, three of the nine 50-year members were in attendance, were recognized and received Golden Membership awards: **Jim Nelson**, (PA Keystone), **Edgar Palpant** (PA Rothrock) and **Jim Parsons** (MD/DE). The six others will receive their framed award and recognition at an appropriate meeting of their local SAF units: **Robert S. Cockroft** (MD/DE), **Henry D. Gerhold** (PA Rothrock), **William H. Gillespie** (WV), **Boyer Kantz** (PA Northern Hardwoods), **Ernest P. Ogden, Jr.** (MD/DE), and **Peter J. Steger** (NJ). ☞

In Memoriam

Thomas C. Respet, Sr., of Smithton, PA and a 33-year member of the Western Gateway Chapter of SAF, died December 5, 2001. Born December 23, 1946 in Johnstown, he was Director of the Tree Division for Penn Line Service, Inc. for 29½ years and a U.S. Army veteran. In addition to his father, Thomas is survived by his wife, Kathryn and three children, Thomas, Erin and Ryan.

Hornbeck New Editor

Jim Hornbeck, Research Forester with the USDA Forest Service's NE Research Station in Durham, NH, was recently appointed editor of the Society of the Society of American Foresters' *Northern Journal of Applied Forestry*. His term began January 1, 2002 and runs until December 31, 2004. As editor, Hornbeck says he will work to make the *Northern Journal* more reader-friendly by including shorter articles and enhancing the flow of information to its readers. ☞

NJ SAF Forest Health Workshop Meeting

By Frank Hennion, Secretary, NJ SAF Division

The NJ Division SAF held its annual business meeting and a Forest Health Workshop at the Rutgers' Club in New Brunswick, New Jersey on November 16, 2001.

Members heard presentations on the status of the 2000 and 2001 Gypsy Moth defoliation and aerial spraying efforts, the Asian longhorn beetle-monitoring program, status of the Hemlock woolly-adelgid and the introduction of the *Pseudoscyrnus tsugae* lady bugs.

Pam Tappen, forester from the NJ Forest Service Community Forestry Group spoke on the condition and impact of the Bacteria Leaf Scorch on the urban forest throughout New Jersey.

Rich Widmann of the USFS presented an overview of the 1999 NJ Forest Inventory and Analysis report. Even with the increasing urban sprawl, New Jersey is now 44.9% forested, an increase of 143,900 acres since the last inventory in 1987. The increase in forestland is attributed to the conversion of agriculture and other open non-forested areas to forest cover. Timberland areas represent 88% of the total forested area.

Mark Vodak, who recently returned from Australia, gave a slide presentation and overview of Agro-Forestry in Australia. Everyone at the workshop was impressed with the intensity and enthusiasm of

those participating in Australia's Agro-Forestry program.

State Forester **Jim Barresi**, reported on the state of forestry in New Jersey. He reviewed the status of Farmland Assessment Regulations which are up for review, budget cuts, federal funding for the Stewardship program, forest fire programs, focus funding, and the 2002 Farm Bill.

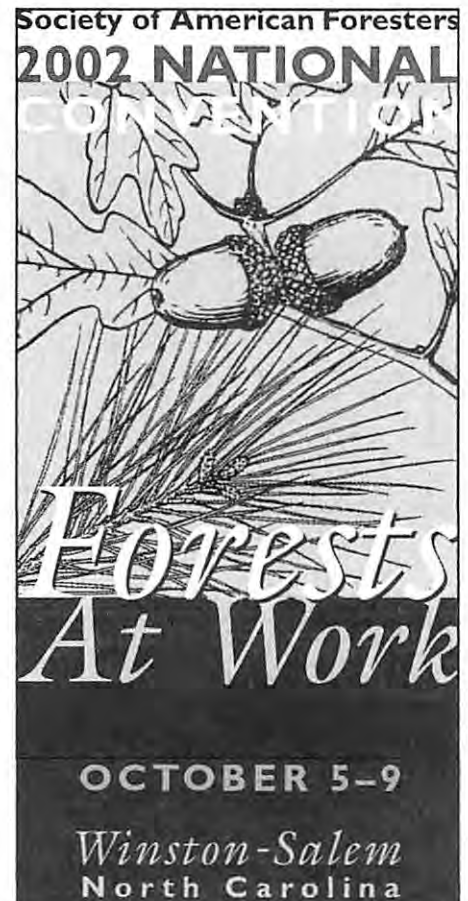
At the completion of the workshop, everyone settled into a gourmet buffet luncheon, followed by the annual business meeting committee reports, awards and the election results of Executive Committee officers for the next two years. ☞

West Virginia University Students Express Gratitude to SAF Fellow, Wilbur Wolf

On behalf of the past, present and future members of the West Virginia University Student Chapter, we publicly thank Mr. Wilbur Wolf for his outstanding generosity to the student members of the Society of American Foresters. His donation in support of the winning Allegheny SAF Quiz Bowl team's transportation costs for the National Convention is appreciated in many ways.

Attendance at the National Convention is very important to students. Often we are asked to 'think outside the box' in order to find solutions and solve problems. Yet, we learn on the inside. Schools, out of necessity, focus on the dominant local ecosystem and management type. While we also learn about other systems, we cannot gain a solid understanding of them from books alone. Interacting with experienced professionals from varied regions and backgrounds exposes us to the intrinsic properties of many types of forest management. It is an opportunity for us to gain knowledge and a greater appreciation for society's ideals and expectations.

Thus, we truly appreciate Mr. Wolf's generosity, because it will help us attain our goals of becoming professional foresters. We hope that someday we may have the opportunity to do the same for the next generation of forestry students. Thank you for supporting the future of forestry! ☞



West Virginia Meeting Highlights

The West Virginia Division SAF Winter Meeting, held January 20-February 1, 2002 at Cacapon State Park in Berkeley County, centered on forest engineering and timber harvesting. Seventy-five foresters from various agencies, organization and firms were in attendance.

Dr. Darrell Dean (WVU Dept of Civil & Environ. Engineering) stressed the importance of advance planning as the key to designing efficient road systems in timber harvesting to avoid the major source of erosion and sedimentation – skid and truck roads.

Several examples that compared different road systems on the same piece of property were used to illustrate his points.

Rudy Williams (WV Division of Forestry) reviewed logger certification and timber notification processes. He detailed some of the recommended best management and road specifications and related them to problems he has encountered when checking on BMP compliance. Roads that did not hold up under logging in WV climate were usually the result of poor planning.

Jim Sherar (USDA Forest Service, Southern Region) discussed a “solutions oriented” field guide he helped to develop for Honduran foresters to use in training loggers and others. The guide answers questions like, “what if the road goes over recommended grade?” Key manual concepts center around the question, “what will we do with the water?” The country has critical problems with terrain and housing developments in the mountainous areas.

Hank Sloan (USDA Forest Service, GW & Jefferson N.F.) talked about matching logging systems with terrain. “Strategic” and “tactical” logging plans must be

considered when planning logging road layout. The conventional cable skidder system has been the preferred logging method in the Appalachians, however, there are several harvesting systems that could be used were there not barriers to change – time, money, skill, contractor recruitment and retention, and Appalachian cultural issues.

Steve Milauskas (WV Extension Service) covered the results of his recent loggers survey and found that they would prefer to have safety, logging cost analysis, and forest and logging training sessions. Loggers also felt that saw workers’ compensation, stumpage prices, and labor issues as the three top issues hindering the industry. Steve is to coordinate a “Low Impact Logging” videoconference in March.

Jerry Stuckey (MeadWestvaco Timber Security) explored the timber theft and fraud issues in forestry. “Everyone is responsible!” Abuses include: contract fraud, contractor/employee theft, load misrepresentation, “kiting” (reporting loads as coming from incorrect tracts), and conflict of interest. Areas of abuse include kickbacks, scale house fraud, bid rigging, log rustling, and trespass while security concerns are arson, vandalism, dumping, protesters, and terrorists. He suggested components of a plan in preparation for protesters and finished his presentation with a video from the Earth Liberation Front to convey the nature and philosophy of this terrorist group.

Jeff Bracken (MeadWestvaco CFM Forester) escorted the group to the MeadWestvaco CFM property owned by Bruce and Kathy Ullom to view some of the implemented practices and discuss local issues like

the rapidly urbanization of the eastern panhandle. High deer populations were discussed in conjunction with pine plantations and a chestnut orchard for nut production.

Glen Juergens (USFS, and Chair, WV SAF) presented a slide talk on the work he had been doing in the Rio Humuya watershed in Honduras, aiding in road reconstruction and rehabilitation following the destructive force of Hurricane Mitch in 1998. He has made recent visits to this area where, coincidentally, he served many years ago as a Peace Corps volunteer. He is working with communities so they retain the knowledge of how to use available road rehabilitation materials long after the project is completed.

Steve Carruth (MeadWestvaco) outlined some of the logging events that are the “root causes” of soil disturbance - traction loss, pivoting and turning, and multiple passes. He showed results of his research that has confirmed that shovel systems (harvesting systems that concentrate wood in patterns that facilitates forwarding or skidding) have made a big improvement over conventional skidder systems in preventing site disturbance.

Jim Kochenderfer (USFS, NE Research Station) summarized several decades of precipitation/peak flow data from the Fernow Exp. Forest and related this to harvesting activity. Patterns of flooding vary by the scale, flooding being largely a function of the amount of precipitation occurring over a short time period. Jim reviewed different methods and water control structures that permit stable and water resistant roads. One of the golden rules of road planning and

(Continued on page 6)

Councilman's Report

By Tim Kaden, SAF District VII Representative

Where has the time gone? Four years ago I had just finished a one-year term as Chair of the House of Society Delegates, ran, and was elected to represent the Allegheny and National Capital Societies on SAF Council for a three year term and now, just getting into a good stride, those rides will be over at the end of this year.

During my term on National Council there were a number of issues that I personally championed for the betterment of the Society of American Foresters and a few issues in which I joined with the consensus of other council members. But those issues that members of the Allegheny and National Capital Societies brought to my attention were made Council agenda items, addressed, reviewed, clarified and resolved. This is the core of my District VII representation on Council and I feel honored to serve you.



It is time to move on, time to elect a new District VII Council representative this Fall; time for nominations and submitting applications to the National Office. There are a number of highly qualified members from both National Capital and the Allegheny Societies that are considering running. My advice to those that have expressed an interest and any of you who are considering the position is, do it! - you will not regret it. Unless one is actively involved in SAF, it is difficult to describe the exhilaration, and yes, the personal and professional growth that accompanies that involvement. And to

all reading this column, your first responsibility and priority is to VOTE for your candidate(s) when that National ballot arrives in September.

The Allegheny SAF winter meeting, with over 200 members students and vendors involved in three days of education and fellowship, was in my opinion a huge success. Hats off to the Maryland/Delaware Division, or should I say the Maryland Division since only two Delaware foresters were there - **Sam Mace** and I did not have a role in putting this conference together. Many thanks Maryland Division.

The Allegheny Society extends a special thanks to **Wilbur Wolf** for contributing \$500 to cover the student quiz bowl winning team's travel expenses. You too can support the Allegheny SAF team entry in the National Student Bowl competition by attending the Nation SAF Convention in Winston-Salem, NC, October 5-9, 2002. Mark your calendar now. To all members that purchased Forester Funds tickets, that small effort raised almost \$700. A big thanks to **Jack Perdue** and **Rocket Ron Sheay** for separating member's money from their wallets. Looking forward to the summer meeting at Gettysburg, PA. SAF President, **Dave Smith** will be there with a state-of-the-SAF message that I'm sure will be of interest to all.

Some Highlights from last Council meeting:

Just a brief reminder that if you are thinking about becoming a Certified Forester, NOW is the time to submit an application. Starting in 2003 new applicants will be required to take an examination to become certified. The contractor that is preparing the certified forest examinations is also developing the Certified Forest Auditor examinations. The Certified Forest Auditor exam addresses the need to credential qualified foresters to audit Certified Sustainable Forest management activities.

SAF has lost one percent of its members over the last six years. You and I need to turn this trend around.

The Centennial Campaign raised close to \$1.5 million. Look for a renewed SAF effort to encourage contributions to SAF through planned giving and estate planning.

On the policy front, Bill Banzhaf reports that SAF no longer just produces task force reports - the policy department actually assists in developing appropriate legislation. Legislators are acknowledging the need to seek SAF science-based information.

Good news category: National Office projects a \$62,000.00 surplus for 2002.

The next council meeting is June 7-9, 2002. Any concerns that you would like me to bring to Council please advise me by May 15, so they can be included on the agenda. I hope to see 1,000 Allegheny members at Gettysburg! Have a great and safe spring and summer till then. ☛

Tim



BETTER FOREST TREE SEEDS

EDGAR H. PALPANT
Consulting Forester



"If a better system is thine, impart it;
if not, make use of mine." Horace (65-8BC)

Operations:
Pal Lane
Mc Alevys Fort, PA

Mailing:
R.D. #1, Box 709
Petersburg, PA 16669
Phone: 814-667-5088
Fax: 814-667-5089

BETTER TREES - THROUGH BETTER SEED - THROUGH RESEARCH
Specializing in Christmas Tree Management

Introducing

TREE PRO's Miracle Tube

A seamless Tree Shelter



- Flared top.
- No assembly required.
- UV stabilized two ways.
- 100% recycled materials.
- Manufactured in the USA.
- Reusable ties are available.

Call us when you need
Weed mats, mycorrhizal and
controlled release fertilizer.

TREE PRO's original
design is still available.

For a free sample
800-875-8071

3180 W. 250 N. West Lafayette, IN 47905
treepro.com

(Continued from page 4)

construction: "manage water in small amounts."

Randy Dye (WV State Forester) reviewed the draft copy of the WV Forest Resources Strategic Plans that is a proposal for funding of forestry programs throughout the state, not just for the DOF. The past fire season was reviewed (80,000 acres burned and two fatalities).

Under the National Fires Plan, a new position has been funded to concentrate on fire prevention in the state.

David Wm. Smith (National SAF President) spoke under the title, "Your Society at Work" that briefed the group on recent legislation at the national level. He covered several recent policy issues that he and especially Mike Goergen (SAF Policy Manager) have been involved in: Farm Bill (S. 1731), which, for the first time, is slated to have a separate forestry title (Title VIII) to fund several new initiatives. He also touched on federal tax issues, the national fire plan, and the Canada softwood lumber agreement. In another initiative last November, SAF met with five other natural resources management agencies to coordinate collaborative efforts in the policy arena. ☐

NJ Forestry Foundation Scholarship(s) Available

The New Jersey Forestry Foundation is accepting applications for scholarship grants, to be awarded for use in the 2002-03 academic year, until May 15, 2002. Scholarship awards are made at the sole discretion of the Foundation, to a college or university full-time student pursuing an academic degree in forestry, forest science, or such discipline as shall be deemed to satisfy the Forestry requirement of the Board of Trustees.

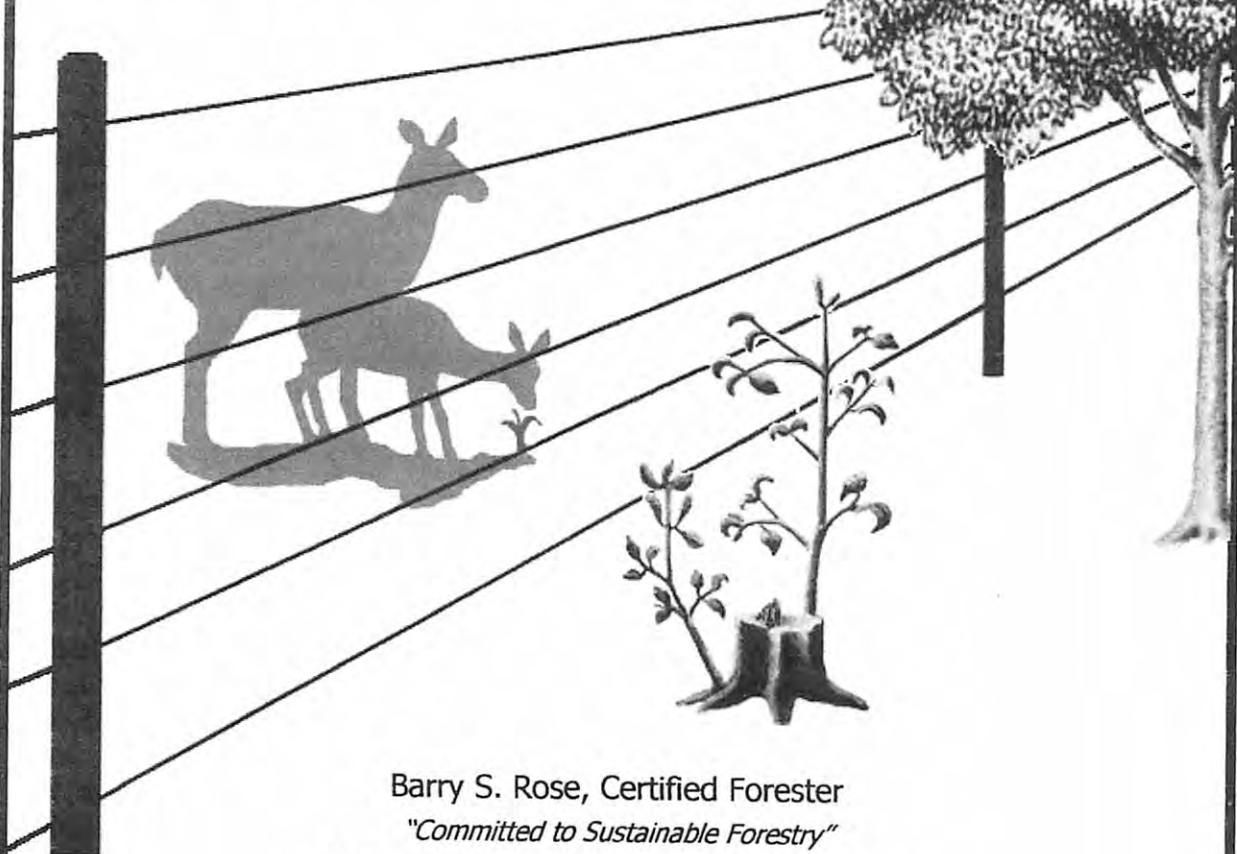
Applicant must be a NJ resident, be entering the junior, senior or post-graduate year, pursuing a course of study outlined above, direct a letter of interest not longer than 200 words, and an application. The application will include a clear statement of goals with personal qualifications and describing financial or other needs, present an outside work experience, provide a complete academic transcript of all college level courses, furnish two letters of recommendation (one from an applicant's faculty instructor and one other) and the applicant must demonstrate a grade point average of 3.0 or better.

Completed applications and all necessary submissions must be delivered to the New Jersey Forestry Foundation, P.O. Box 130, Milmay, NJ 08340 by May 15, 2002 (telephone 856-696-5300). ☐



Ground
Herbicide Applications

Electric & Woven Wire
Deer Exclosure Fences



Barry S. Rose, Certified Forester
"Committed to Sustainable Forestry"

P.O. Box 319, Lawn, PA 17041 (717) 964-2264

www.ForestRegeneration.com

Society of American Foresters PA Division

Minutes from Annual Meeting, February 27, 2002 in Hagerstown, MD

Call to order - 30 members in attendance

Secretary's Report - Read \ Approve

Treasurer's Report - Read \ Approve

OLD BUSINESS

PSU Ag Council: B. Bauer report; Ned Karger new PA Chair = represents SAF on Executive Committee; Annual Meeting April 25, 2002; Legislative research tour July 17.

Jim Nelson video: Mike Jacobsen will coordinate, meeting with J. Nelson and video producers to estimate costs, logistics, etc. Discussion was held and decision to apply for Forester's Fund grant after cost estimate

Log a Load for Kids: PASAF will sponsor a station at this year's program. Anyone interested in participating in event should contact D. D'Amore

Township Ordinance Committee: Replacement for Chair W. Wolf?? Bob LaBar had volunteered (not present) but it might be good to have a Harrisburg area representative. Last year we agreed to cooperate in news clipping service with ACF, HLMA but this arrangement has not yet been set up.

Seguin Moreau NAPA Wine: Company continues to donate to white oak seedling plantings - 2002 planting will be on Sunday April 28. Location is Sproul State Forest, Yost Ridge Road. PSU Student Chapter and NH Chapter members will be coordinating. This is a PA Division function and more help is needed. Contact Doug D'Amore at Sproul State Forest District Office (570) 923-6011 or email ddamore@state.pa.us for information.

Sept. 2001 Joint SAF, SFI, and PSU Meeting: Credit to B. Bauer for organization; Thanks to PSU School of Forest Resources & SFI. Close to break even with a total PA Division cost of \$469. Bauer gave report on meeting.

NEW BUSINESS

Ben Roach Forestry Forums: Kane Country Club, Kane PA

April 18, 2002 - Bill Luppold, USFS Research, WV. "Current Trends in Hardwood Markets"

October 10 or 17, 2002 - Bill Ostroski, U of Maine-Orono, "Mechanized Harvesting Systems"

Allegheny SAF Summer Meeting: Gettysburg, PA, Keystone Chapter Host, June 19 - 21, 2002

"History in the Making," to be a low cost family oriented event with plenty of time for sightseeing etc. Meeting announcement in next Allegheny News

PA Division Leadership Academy: June 19, Gettysburg. All Chapter and Division officers invited. Ned Karger will be organizing and contacting all chapters.

PA Council of Professional Foresters (PCPF): President Mark Webb presented update. Lobbyist has been contracted (Joe Dudick). A meeting was held March 15 to prepare to move the "Foresters Accountability Act" forward. Members should support the legislation through contact with local legislators.

2003 Allegheny SAF Winter Meeting: Northern Hardwood Chapter sponsor February 19-21, 2003 Williamsport, PA, Genetti's Hotel, "NC PA: A Model for Multiple Use Management."

2003 Allegheny SAF Summer Meeting: Rothrock Chapter Host

PA Division of SAF Joint Meeting with Wildlife Society \ Fisheries Society: Tentative dates April 3-6 or 10-13, 2003. Bob Bauer is our committee representative. Bob, Ned, others will set up Friday tour of forested habitats.

OTHER BUSINESS

Allegheny SAF financial situation: Ken Kane gave update financial situation of the Allegheny SAF, emphasizing that PA SAF is a significant portion of the five-state Allegheny society. Motion was passed to donate \$1500 to Allegheny SAF with emphasis on support for Executive Director position.

Motion to adjourn \ Approve

A FREE instruction booklet for the SAF Certified Forester Program is available from the National Office at (301) 897-8720, ext. 122

2002 Seguin Moreau Oak Planting

Over the last three years the Seguin Moreau Wine Company of California has donated \$4,000 to the Pennsylvania SAF Division to plant white oak seedlings above the 41st latitude. The company makes wine barrels from white oak staves and has found that trees at least 150 years old, grown in forested conditions above this latitude make the best barrel staves.

Due to the long rotation length and need for uniform management, the Division Executive Committee has decided to take the Seguin Moreau's donations and plant trees on public forestland. To date 3,200

trees have been planted on the Sproul State Forest and Game Lands in the Game Commission's Northwest Region. 900 protective tree tubes have been also been purchased and used in conjunction with the plantings. Members of the Pennsylvania Division and their families, The Penn State Forestry Club, and other volunteer groups have planted the trees using materials purchased through Seguin Moreau's donations.

The project location this year will be in an old fire area on Yost Ridge Road approximately 15 miles north of Snow Shoe on Route 144

in the Sproul State Forest. We will be planting 300 white oak seedlings in tree tubes and interplanting 1,000 white pine between previous years plantings to help serve as trainer trees. The festivities will start at 9:30 a.m. on April 28, 2002 at the planting site and lunch and needed planting tools will be provided. Please contact Doug D'Amore at 570-923-6011 (w), 570-923-1517 (h) or e-mail ddamore@state.pa.us for specific directions and to help us plan for lunches. All family members are encouraged to come and participate at individual comfort levels. ☞

Penn State Wins Allegheny SAF Student Quiz Bowl

By Beth Brantley, Chair, Student Quiz Bowl Committee

The 15th Allegheny SAF Student Quiz Bowl was held on Wednesday, February 27, 2002 at the Clarion Inn in Hagerstown, MD, in conjunction with the Annual Winter Meeting. Teams from five of the forestry schools in the Allegheny Society competed; each round lasted 20 minutes, with **Beth Brantley** reading the questions and **Tim Kaden**, **Jack Winieski**, and **Bernie Zlomack** judging.

The first round consisted of the Pennsylvania College of Technology team, **Mark Hockley**, **Joe Cicchiello**, and **Gerald Hoy**, against the Allegheny College of Maryland team, **Tim Akers**, **Jesse Morgan**, and **Aaron Bennett**. This exciting round ended in a score of Penn College (15) and Allegheny College (-5). Penn College would continue to a future round against Penn State Mont Alto.

The second round pitted the 4-year schools against each other, Penn State University's team of **Brent McNeal**, **Brock Sanner** and **William Harlon** against West Virginia University's team of **Anthony V. Scardina**, **Jeffrey Huff**, and **Karen Cox**. The Penn State University team won this round.

The third round found the Penn State Mont Alto team of **Wade Brown**, **Gary Lee Smith, Jr.**, and **Greg Sanford** competing against Penn College. The final score of this round was Mont Alto (30) and Penn College (-5).

The final round between Penn State University and Penn State Mont Alto ended with a final score of Penn State (25) and Mont Alto (-5). The judges declared Penn State University the 2002 Allegheny SAF Student Quiz Bowl winners.

All competitors answered the questions well - it's tough being up there under the pressures of time and an audience of peers and professors! Good luck to the Penn State University Quiz Bowl Team at the national SAF meeting in Winston-Salem, NC this October! ☞



Penn State University Winners Brock Sanner, Brent McNeal, and Bill Harlon

2001 Allegheny SAF Awards

The awards banquet at the 80th annual Winter Meeting of the Allegheny Society of American Foresters, February 26-28, 2002 at Hagerstown, MD, was an opportunity to recognize members' service to the profession and to SAF. Awards Committee Chair **Kenneth Jolly** graciously acknowledged the assistance of his "ghost" committee and proceeded with the awards ceremony.

Harry W. Staley, of the Maryland/Delaware Division received the "**Outstanding Service to Forestry**" Award for 2001. The award recognizes outstanding professional conduct and achievement in forestry, the promotion of forest conservation and service to society over the time span of one's professional career.



Ken Jolly (left) presents Harry W. Staley with the "Outstanding Service to Forestry" Award

Staley received a BS in Forestry from Virginia Tech in 1966 and has been a member of the MD/DE SAF Division since 1966, having served in executive capacities as secretary/treasurer, vice-chair and chair. He worked for the MD DNR Forestry Service from 1966-72 preparing woodland management and wooded home site development plans, and as Supervisor of Support Operations for the MD Park Service from 1972-76 where he was involved in forest

policy development and park administration. In the period 1975-90, he became co-owner of E & E Trees, Inc., a consulting forestry and commercial nursery firm. Since 1990 he has been owner of Forestry Concepts, his own forestry consulting company operating in Maryland, Virginia, and Pennsylvania. Harry has been MD Registered Professional Forester #75 since 1974.

In advancing the art and science of forestry, Staley has made himself available for educational tours, workshops, seminars and presentations in cooperation with Forest Extension, DNR Forest Service, county officials and landowners associations and has served on forest conservation committees in Carroll and Frederick Counties. Concerned with harvest aesthetics and associated regeneration, he has taught a harvest aesthetics and management course for the MD Forests Association and conducted tours of horse-logging operations for the MD Coverts Project, the Old Line Chapter of the Soil & Water Conservation Society and the Frederick Co. Commissioners. He is a present member of the Master Logger Committee with the MD Forests Assn. and an instructor with the MD Farm Bureau. In regards to community activities Harry is a past member of the Taneytown Lions Club, on the Board of Governors of the Carroll Co. Museum and the MD Forests Associations and is active in his local church.

Lawrence P. Walton of Salisbury, Maryland was chosen as the 2001 Allegheny Society of American Foresters "**Forester of the Year.**" The Award recognizes professional achievements in a current time span, in this case, 2001.



Lawrence P. Walton (left) accepts his "Forester of the Year" award

In addition to a high caliber of conduct in the pursuit of professional achievements and the promotion of professional forestry to the public, awardees must have exhibited a current exceptional accomplishment. Walton's management of the Chesapeake Forest Project in Maryland has greatly helped to raise the public visibility and respect for the forestry profession in the region.

Larry is a 1974 graduate of the Clemson University Department of Forest Resources and a 28-year member of SAF. His professional career as a forester was spent primarily with the Chesapeake Forest Products Corporation where he started in 1974, working as the Land Manager for the Eastern Shore until the company's sale in 1999. On December 31, 2000, he resigned from Smurfit-Stone (successor company to Chesapeake) to establish a new forestry consulting service, Vision Forestry LLC, in Salisbury. At Vision Forestry, Larry and partner Neil Sampson provide land planning and management services for clients seeking to achieve sustainable forest management and certification. During 2001, Larry was instrumental in managing the 29,000-acre public portion of the Chesapeake Forest Project prior to its transfer to the State of Maryland as well as serving a variety of private clients.

Starting from scratch in 2001, Larry coordinated the implementation of the first year's activities under state ownership of the Chesapeake Forest. That involved creation of annual work plans focusing largely on thinning of young plantations with the accompanying riparian buffers and wildlife corridors, meshing the planning process with DNR processes, implementing the FY 2002 work plan while preparing a detailed 2003 work plan and beginning investigations for 2004. In between this workload, interdisciplinary review teams were hosted and preparations made for managing selective harvests and clearcuts to encourage natural regeneration, both pine and hardwoods and maintaining a flow of fiber under a fiber supply agreement working through small contractors. In addition there was the leased hunting program (143 hunting clubs), collaborative monitoring with DNR and local university scientists, design of a GIS-based information management system, and an intensive public information program to oversee.

Throughout this incredibly busy season, Larry hosted a "readiness review" under the Sustainable Forestry Initiative in preparation for an SFI certification review in 2002 - all the time managing a staff of three foresters and creating an entirely new approach to public-private collaborative forest management. Worthy of recognition as Allegheny's "Forester of the Year."

Robert (Bob) Hobbes, Jr. received the 2001 "Field Forester of the Year" Award for SAF Division VII, which includes the five-state Allegheny, and National Capital societies. The award recognizes individuals who have displayed uncommon talent and innovative methods achieving a record of excellence in the application of

forest management practices. Bob is owner of Hobbes Forestry Services, a private consulting firm.



Robert O. Hobbes, Jr. (left) is given the "Field Forester of the Year" award by Mike Lester

Elections to SAF Fellow

Joseph Ibberson, Kurt Gottschalk, and Wilbur Wolf, Jr. were recognized at the Awards Banquet for being elected to the prestigious rank of Fellow. Election to the Fellow status is the highest form of recognition by the Society from one's peers for a career of outstanding service to SAF, the forestry profession, and society. The Fellow award is limited to less than 5% of the 18,000 national professional membership.

Joseph E. Ibberson of Harrisburg, PA is a 48-year member of the Keystone and Pennsylvania units of the Allegheny SAF. He has served on numerous committees of all three units, including membership recruitment along with Henry Clepper. Ibberson retired from the Pennsylvania Bureau of Forestry (BOF) in 1977 as Chief of the Forest Advisory Services (FAS) after 29 years of service to the Commonwealth. He holds a BS in Forestry from Penn State University, 1947, and an MF from Yale University, 1948. Between 1942 and 1945 he served in the US Army.

Ibberson was responsible for initiating the FAS Division, a group of forest specialists in silviculture and planning, wildlife management,

entomology, pathology, wood utilization, genetics, service forestry, biometrics and computer applications. Under his direction, FAS provided continuing education to BOF programs and cooperated with US Forest Service, Penn State and the PA Game Commission in developmental research projects.

Many new and innovative forest resource management practices were spawned in FAS: the first of several forest resource management plans for Pennsylvania's over two million acres of State Forest Land, more sophisticated bio controls and the rearing and release of predators and parasites in pest control, a periodic marketing bulletin and technical assistance to the wood utilization industry, a genetics tree program in conjunction with the forest tree nurseries, the first extensive service forestry program, the application of biometrics and computer programming contributing to forest inventory, planning, timber sales processing, reproduction monitoring, and personnel and other record keeping activities.

Ibberson practiced what he preached - successfully combining over 2000 acres of fragmented woodland parcels into several large tree farms. One 350-acre area has been donated to the PA State Parks system as the first PA Conservation Area, to be developed and managed for passive recreation activities and working forest demonstrations. He has endowed a fund with the PA Forestry Association and established a Chair at Penn State to train foresters to help the over 500,000 Non Industrial Private Forest (NIPF) landowners in PA. The majority of poor and improper forest resource management in PA is occurring on NIPF lands.

Recognition of Ibberson's efforts have included awards: 1998 PA Outstanding Tree Farmer, NE

(Continued on page 12)

(Continued from page 11)

Region, 1999 Outstanding Management of Resources, 1999 Dauphin Co. PA Forest Stewardship Conservation and the PA Audubon Society 2001 Conservation Landowner.

Kurt W. Gottschalk of Waynesburg, PA, has been very active member on the regional and national level of the SAF for 28 years. He is presently project leader and research forester with the USDA Forest Service in Morgantown, WV, holding degrees from Iowa State University (BS) and Michigan State (MS and PhD).

Gottschalk's research career has focused on the use of forest management practices to minimize impacts of the gypsy moth, a major defoliator, and on the rehabilitation and regeneration of oak-dominated forests. His model for the "Gypsy Moth Slow-the-Spread" program is credited with reducing the spread of this pest into uninfested forests by more than 50%. He also developed forest management techniques and guidelines that reduce tree mortality resulting from gypsy moth defoliation. Under his leadership, the group has also developed regeneration guidelines for mixed hardwood forests. Currently, he is researching oak regeneration.

Gottschalk has over 100 invited presentations, including three at SAF National Conventions and numerous chapter and state society meetings and international meetings. He has published 94 papers, and consulted in England, France, Germany, Austria, Croatia, Hungary, Romania, Slovakia, Russia, Finland, and Canada.

Gottschalk was editor of the *Northern Journal of Applied Forestry*, 1995-2002, and served on the Forest Ecology and Physiology Committee Working Groups of SAF. He is a member-at-large on the Allegheny



SAF Fellows Kurt Gottschalk and Wilbur Wolf, Jr. (Joe Ibberson's Fellow certificate will be presented at the Summer Meeting)

Executive Committee, and served or held office on the Forest Entomology and Pathology, Forest Health and Productivity, Research, and Section Reorganization Committees. Awards Include: Certificate of merits, achievement and excellence in technology transfer, Federal Laboratory Consortium, 1997 and National Hardwood Lumber Association, 1995; USFS certificate of appreciation, contribution to development and articulation of forest health policy for the US, 1996. Honor Society affiliations: Xi Sigma Pi; Gamma sigma Delta; Alpha Zeta; Sigma Xi; American Institute of Biological Sciences; Ecological Society of America.

At the community level, Kurt is a member of the United Methodist Church and has served as a deacon, trustee, and on the building and grounds committees. He currently sings in the church choir, is lay leader, First UMC, Waynesburg, PA, and is a member of a Carpenter's apprentices volunteer group.

Wilbur E. Wolf, Jr., is a 40-yr. member of the SAF. He retired as District Manager with the Glatfelter Pulp Wood Company, Spring Grove, PA in 1993 where he was a member of the company's Board of Directors and is now a private consulting forester working out of

Carlisle, PA. He received a BS in Forestry from Penn State University in 1959 and served as a commissioned officer in the US Army from 1959-64.

Wolf is a past Chair of the Allegheny SAF, has chaired the PA Division Timber Harvesting Advisory Committee, served as Newsletter Editor, has been a volunteer in the student mentor program and active on program organizing committees.

At the local and state levels, Wolf has been an especially effective ambassador of the forestry profession, serving as: Cumberland County, PA Conservation District Director and Chair; Conodoguinet Creek Watershed Association President; PA Tree Farm Committee Chair; PA DCNR Timber Harvesting and Ecosystem Management Advisory Committees member; PA Wildlife Federation Board member and Secretary; Non-point Source Silviculture Workshop of PA Dept. of Environmental Resources member and technical consultant; Forest Wetlands BMP and Forest Management Practices task forces technical consultant; Cumberland County Extension Assoc. Land Use and 4-H Advisory Committees member; PA Forestry Assoc. lifetime member; PA Sustainable Forestry Initiative Logging Curriculum committee member; Red Lion Envirothon team instructor; Big Spring School Board and Penn Township Planning Commissions past president.

Wolf's many awards include: FFA Honorary Chapter Farmer; PA Forestry Assoc. 100th Anniversary Natural Resources Conservation; and Cumberland Conservation Dist. Ann Rudd Saxman Conservation Volunteer and the 1997 Allegheny SAF career "Outstanding Service to Forestry." ❧

2002 Allegheny SAF Reginald Forbes Art Show

By Charlie Newlon

Fourteen Society of American Foresters' members and their families from Maryland-Delaware, New Jersey, and Pennsylvania Divisions entered eighteen art pieces in 2002 Allegheny Reginald Forbes Art Show at the Hagerstown, Maryland Winter Meeting. Entries were judged by ballot by meeting registrants.

This year, the Art Show was entirely financed by \$315.00 in donations from members. Bob LaBar contributed \$140 toward the cash prizes given to the winners, as he did in 2001 (first prize winners received \$30, second received \$20 and third received \$10). Dennis Galway matched Bob's \$140 donation this year. Jim Himel donated his \$10 prize back to the Society. Charlie Newlon made and donated the ballots, entry forms, and certificates for \$25. Thanks to all of you who made the Art Show a success!

We are still awaiting the first ever entries by SAF Student Members. How about next year? ☺

Winners of the 2002 Reginald Forbes Art Show

Professional Category

Flat Art - Painting

Place	Subject	Artist
1st	<i>A Road Not Taken</i>	Harry Staley
2nd	<i>Winter</i>	Harry Staley
3rd	<i>Streamside Buffer sign</i>	Jim Himel and Scott Mattern

Amateur Category

Three Dimensional Art

Place	Subject	Artist
1st	<i>Quilted Wall Hanging</i>	Connie Bauer
2nd	<i>Penny Rug - Apple Tree</i>	Chrissy Harrigan
3rd	<i>Penny Rug - Sunflowers</i>	Chrissy Harrigan

Flat Art - Painting or Computer art

Place	Subject	Artist
1st	<i>Harlequin Beetle</i>	Suzanne Matlock
2nd	<i>Orchids</i>	Ashley Wurzbacher

Flat Art - Photography

Place	Subject	Artist
1st	<i>Coyote in Yellowstone NP</i>	Lorie Tavella
2nd	<i>Sunset on the Sheepscot</i>	Ron Sheay
3rd	<i>Twilight</i>	Sam Mace

Sculpture - Wood Carving

Place	Subject	Artist
1st	<i>Cedar Box</i>	Lloyd Casey
2nd	<i>Cat Bird on Yellow-poplar</i>	Lloyd Casey



THE NELSON PAINT COMPANY

From the first name in forestry paint - Nelson Paint has been making high quality forestry paints and products for over 60 years.

Nelson Paint and Equipment offer:

Vibrant, non-absorbing colors
Easy application with Nel-Spot gun
Long-term and short-term marks

BUY FACTORY DIRECT

at

1-800-236-9278

or online at

www.nelsonpaint.com

Allegheny Society of American Foresters 2001 Treasurer's Report

BEGINNING BALANCES (on January 1, 2001)

Checking Account	\$ 418.99
Endowment Savings	2,574.46
Endowment CD	10,000.00

CHECKING ACCOUNT INCOME:

2001 Allegheny Dues	\$ 12,821.75
2002 Allegheny Dues	4,265.00
Contributions:	
Forester Fund-Winter Meeting	250.00
Maryland-Delaware Division	300.00
West Virginia Division	100.00
Northern Hardwoods Chapter	75.00
Plateau Chapter	75.00
Mike Lester	100.00
Mark Webb	100.00
Tunis Lyon	100.00
2001 Div/Chapter Dues (pass through)	4,764.50
2002 Div/Chapter Dues (pass through)	1,570.50
NJ Forester Fund Grant (pass through)	4,000.00
Checking Account Interest	20.71
Endowment Fund Interest (student travel)	475.76 [A]
Total Checking Account Income:	\$ 29,018.22

NOTES:

[A] In February 2001, the Executive Committee approved/designated the annual interest from the Endowment CD for student travel support. Consequently, the annual CD interest was transferred from the Endowment Saving Account into the Checking Account in accordance with this decision.

[B] This transaction is a 1999 Dues Distribution check re-issue to Valley Forge Chapter.

[C] Executive Director expense for the third quarter (\$530.00) was deducted from the Allegheny News advertising income fund. This fund is a separate account maintained by the Executive Director.

[D] The Reginald Forbes Art Awards are funded by a specifically designated \$150.00 contribution. After deducting the 2000 and 2001 award amounts, the current designated fund balance is \$50.00.

[E] This amount includes \$400 for Winter Meeting travel support, and \$500 to WVU for National Convention travel support. Due the events of September 11, 2001, the WVU students did not travel to the 2001 Convention, and the \$500 travel support provided for this purpose will be requested to be returned to the Allegheny Account.

[F] In February 2001, the Executive Committee agreed to pay back \$1,630.00 transferred out of the Endowment Savings Account to cover the 2000 budget deficit over a two-year payback schedule. This \$800 represents the 2001 payment; the remaining \$830 will be paid back in 2002.

CHECKING ACCOUNT EXPENSES:

2001 Div/Chapter Dues (pass through)	\$ 4,764.50
2002 Div/Chapter Dues (pass through)	1,570.50
NJ Forester Fund Grant (pass through)	4,000.00
Valley Forge 1999 Dues (check re-issue)	57.70 [B]
HSD Assessment	505.62
Allegheny News (3 issues)	5,122.94
Executive Director Stipend	4,400.00
Executive Director Expenses	1,590.00 [C]
Awards	162.00
Reginald Forbes Art Awards	35.00 [D]
Student Travel	900.00 [E]
Endowment Savings Payback	800.00 [F]
Bank Service Charge	9.00
Total Checking Account Expenses:	\$ 23,917.26

CHECKING ACCOUNT TOTAL INCOME LESS EXPENSES \$ 5,100.96

CHECKING ACCOUNT ENDING BALANCE \$ 5,519.95

ENDOWMENT SAVINGS BEGINNING BALANCE \$ 2,574.46

Endowment Savings Activity:	
Interest	\$ 58.39
Interest (received from CD)	475.76 [A]
Interest (transferred to Checking)	(475.76)
Endowment Savings Payback	800.00 [F]
Endowment Savings Current Balance	\$ 3,432.85

ENDOWMENT CD BEGINNING BALANCE \$ 10,000.00

Endowment CD Activity:	
Interest	\$ 475.76
Interest transferred to Endow. Sav.	(475.76)
Endowment CD Current Balance	\$ 10,000.00

ACCOUNT SUMMARY: ENDING BALANCES (on December 31, 2001)

Primary Account (Checking)	\$ 5,519.95
Endowment Savings	\$ 3,432.85
Endowment CD	\$ 10,000.00

Respectfully prepared,
Kenneth W. Jolly, Secretary/Treasurer

Audit Confirmation:
Ronald J. Sheay, Auditing Committee Chair

"HISTORY IN THE MAKING"

2002 ALLEGHENY SAF SUMMER MEETING
EISENHOWER HOTEL IN GETTYSBURG
JUNE 19-21, 2002



Wednesday, June 19

- 12:00pm - 6:00pm: Registration Open
- 2:00pm - 4:30pm: Optional Tour of Gettysburg Battlefield led by licensed guides—LIMIT = 45 Seats
- 4:30pm - 6:00pm: DINNER ON YOUR OWN
- 6:00pm - 8:00pm: Icebreaker Social
- 8:00pm - 9:00pm: Allegheny SAF Meeting, Location TBA

Thursday, June 20

- 7:00am - 12:00pm: Registration Open
- 8:00am - 8:15am: Opening Remarks
Tim Kaden, Delaware Parks & Recreation
Ken Kane, Chairman of the Allegheny Society
- 8:15am - 8:45am: 15-year Management Plan for Gettysburg NMP
John Latcher, Superintendent, Gettysburg NMP
- 8:45am - 9:30am: Implementation of Gettysburg's Management Plan
Dr. Herbert Frost, Natural Resource Specialist, Gettysburg NMP &
Randy Krichten, Forest Technician, Gettysburg NMP
- 9:30am - 9:45am: SAF Membership
Bob Bauer, Chairman Elect of the Allegheny Society
- 9:45am - 10:00am: BREAK
- 10:00am - 11:00am: Logging History
Richard Pauling
- 11:00am - 11:40am: Pinchot History
Edgar Brannon, Director of Grey Towers Nat. Historic Landmark
- 11:40am - 12:10am: Woodlot Management
Dr. Todd Bowersox, Professor of Silviculture, Penn State
- 12:10pm - 1:30pm: LUNCH (Included)
- 1:30pm - 5:00pm: Afternoon Field Tour: Woodlot Management at Gettysburg NMP

Friday, June 21

- 8:00am - 8:30am: A National Perspective
Invited: Dr. David Wm. Smith, President of SAF
- 8:30am - 9:00am: Women in Forestry
Dr. Susan Stout, United States Forest Service, NEFES
- 9:00am - 9:15am: Introducing "Teachers for the Forests"
Rob Jones, Director, Teachers for the Forests
- 9:15am - 9:30am: Closing Remarks
Ken Kane, Chairman of the Allegheny Society
- 9:30 am: Silent Auction Closes
- 9:30 am - 10:00am: Payment for and Pickup of Silent Auction items
- 10:00am - 3:00pm: Tour of Michaux State Forest - BAG LUNCH INCLUDED

Your registration fee includes:

- The Icebreaker Social
- Lunch on Thursday and Friday
- Two Field Tours
- and Lots of Great Speakers!

Continuing Education Credits are Available

What are you waiting for?
Use the form below to
Register NOW!!

Registration Deadline: May 31, 2002

Member Registration:	\$72.00	_____
Member plus Spouse/Guest:	\$132.00	_____
Non-Member:	\$92.00	_____
Student:	\$40.00	_____
Optional Battlefield Tour: LIMIT=45 Seats	\$20.00	_____
Late Registration (after 6/1/02):	\$20.00	_____
Walk-In Registration:	\$100.00	_____

Total Amount Enclosed:..... _____

Make Check or Money Order Payable To **Keystone Chapter - SAF**

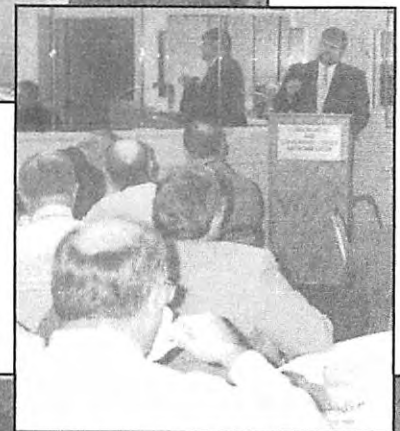
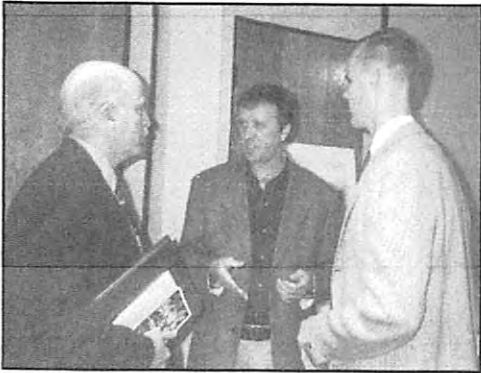
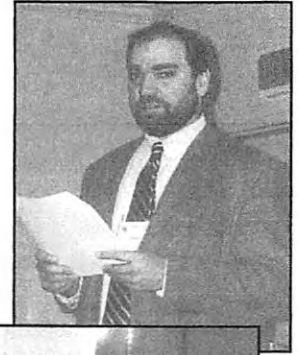
MAIL TO: Rachel R. Billingham
PA Bureau of Forestry
400 Market Street, 6th Floor
Harrisburg, PA 17105-8552
717-783-0385 rbillingha@state.pa.us

Name: _____
Address: _____
City: _____ State: _____ Zip: _____
Occupation/Business Name: _____
Business Phone: _____
Home Phone: _____

Eisenhower Hotel
2634 Emmitsburg Road
Gettysburg, PA 17325
1-800-776-8349 www.eisenhower.com

Don't forget that you will need to use the above information to make your own hotel reservations.

Allegheny SAF Winter Meeting Photo Highlights



Allegheny Society of American Foresters

Executive Committee Meeting Minutes of February 26, 2002

Attendees:

Allegheny Officers: K. Kane, Chair; M. Lester, Past-Chair; R. Bauer, Chair-Elect; K. Jolly, Sec/Treasurer; H. Wurzbacher, K. Sykes, and J. Perdue, Exec. Comm. Members; J. Winieski, Exec. Director; T. Kaden, Council Representative. **Division/Chapter Officers & Committee Representatives:** N. Karger, PA Div. Chr.; D. VanHassent, MD-DE Div. Chr.; S. Resh, MD-DE Div. Chr-Elect; G. Juergens, WV Div. Chr.; V. Ford, WV Div. Chr-Elect; R. Sheay, Audit Comm. Chr.; T. Clark, SAF National Science Manager; M. Webb, Alleg. Past-Chr.

Minutes from previous Executive Committee Meeting:

No discussion; approved as published in the Allegheny News.

Treasurer's Report:

2001 Treasurer's Report was reviewed and approved (copy on page 14). End of year balances: Checking: \$5,519.95; Endowment Savings: \$3,432.85; Endowment CD: \$10,000.00. R. Sheay was thanked for auditing the report. Current Treasurer's Report was distributed. Current balances: Checking: \$10,269.65; Endowment Savings: \$3,450.73; Endowment CD: \$10,000.00.

Audit Committee Report:

R. Sheay advised the Executive Committee he had met with J. Winieski and completed an audit of the Allegheny News Account, and confirmed all to be in order. Ending balance: \$1,401.11, which includes \$423.10 from a PA Division grant for helping municipalities with harvesting ordinances.

Budget:

An extensive discussion was held concerning the 2002 Allegheny Budget. The 2002 Budget was adopted, as follows (please refer to explanatory notes):

Income:		Expenses:	
Dues	\$ 13,000(a)	HSD Assessment	\$ 500
Section Meetings	\$ 1,250(b)	Allegheny News	\$ 6,800(d)
Vol. Contributions	\$ 800(c)	Exec. Director Stipend/Expenses	\$ 6,600(e)
		Chair Nat. Convention Expenses	\$ 0(f)
		Student Travel	\$ 500(g)
		Endowment Payback	\$ 830(h)
		Awards	\$ 170
		Administrative items	\$ 200
Total Income:	\$ 15,050	Total Expenses:	\$ 15,600(i)

Notes:

- (a) excludes Div/Chapter pass-through dues
- (b) this was set at a conservative level, keeping in mind the poor financial returns from 2001 Section Meetings; however, the Exec. Comm. communicated its aspiration that the hosting Div/Chapter for the 2002 Section meetings would exceed this amount if meeting financial returns were positive
- (c) in addition to Allegheny Contributions, M. Lester will approach Nat. Capital SAF to solicit a contribution from the 2000 Nat. Convention proceeds in recognition of the volunteer support provided by the Allegheny for the Convention
- (d) four issues budgeted at approx. \$1,700 each
- (e) K. Kane noted that the stipend for the Exec. Dir. position has remained constant since the position was established, and expressed his desire to increase the stipend when/if the budget allowed
- (f) expense will be maintained as a line-item budget, but is "zeroed out" again for 2002, as K. Kane noted he would be able to cover his Convention expenses this year
- (g) student travel was reduced from the previous year's \$1,000 level, based on the \$500 Nat. Convention travel support funding to be returned from WVU; this amount will be re-directed to this year's Quiz Bowl winner, resulting in a \$500 reduction in student travel support in 2002
- (h) this will be the final installment of a two-year payback to the Endowment Savings Account for a loan which occurred in 2000 to cover a Operating Budget shortfall
- (i) the Exec. Comm. elected to adopt a "non-balanced budget", predicated on the following: (a) expectations of better financial returns from 2002 Section Meetings than the amount budgeted for, and (b) that expenditures can be reduced as needed later in the year if these anticipated financial returns do not materialize

(Continued on page 18)

(Continued from page 17)

Budget (continued):

The Exec. Comm. also elected to set up an Ad-hoc Budget Committee to: (1) explore/develop income opportunities and stabilize the Allegheny budget income; (2) provide a recommendation to the Exec. Comm. on whether the Forester Fund and Silent Auction should be run/organized by the Section or the Host Div/Chapter; (3) provide recommendations to increase membership (and thus dues income); and (4) provide recommendations to increase Allegheny News advertising income. K. Kane will chair this committee; others serving on the committee include: M. Lester, K. Jolly; K. Sykes, R. Bauer, J. Winieski, and a representative from NJ Div (TBD).

Other budget-related issues discussed: (1) debate was held on whether to continue allocating Endowment CD interest to support student travel; for 2002, the Exec. Committee decided that no interest will be transferred from the Endowment fund for this purpose; (2) Mike L. will contact R. LaBar and ask him to up-date the "how to run meetings" document (with the intention to ensure financially successful Section meetings).

Council Representative Report:

T. Kaden noted following items: (1) National Capital SAF is currently conducting the annual phone-a-thon to recruit lapsing members; (2) the Certified Forester program will be implementing new testing requirements in the near future; (3) Tim's term is completed this year; nominations for those interested in running for Council are due in mid-Summer; (4) the Student Mentoring program continues on course; approximately 30 students participated this past year from Penn State, WVU, and Mt. Alto; (5) this year's Leadership Academy is scheduled for May 4-7; (6) Tim requested any feedback on the Core Values for the SAF which were printed in the Allegheny News; and (7) future National Convention sites will be: 2002-Winston-Salem, NC; 2003-Buffalo, NY; 2004-Alberta, Canada.

SAF National Science Manager

T. Clark highlighted several items regarding this year's convention: over 107 hours of workshops will be available; there will be a corporate track for presentations of new forestry products; there will be a new leadership track; there will be 14 tours, which will incorporate students (i.e., no separate "student tours"); and there will be professional development workshops. Attendance is expected to be high, due to the fact that 45% of the SAF membership lives with driving distance to the Convention; so Terry and Tim encouraged everyone to register early.

Executive Director Report:

Jack Winieski inquired as to an Allegheny Policy Statement previously under consideration; M. Lester responded that no action had been finalized due to lack of NJ representation. Jack advised that three Allegheny members had passed away in 2001; these members will be recognized with a moment of silence at the Awards Banquet. Jack also advised that Fellow nominations were due May 31. Ken Kane thanked Jack for all his hard work as Exec. Director, and especially commended his work in editing the Allegheny News.

Miscellaneous Allegheny Officer and Division/Chapter Items:

K. Kane - noted he had several certificates for Golden Members, some of which will be presented at the Awards Banquet, and some which will need to be distributed to the Div/Chapter for appropriate presentation at a later date.

M. Lester - thanked everyone on the Exec. Committee for their support during his term as Chair. Also noted the Diversity Committee would soon be completing their report and presenting it to the Chair for future action.

S. Resh - Requested the Exec. Committee look at ways to reduce student fees for attending Section meetings. One suggestion put forth was a to include a check-off box for members on meeting registration forms to give a donation to support student registration fund. K. Kane stated that this issue would be added to the list of responsibilities to be explored by the recently created Ad-hoc Budget Committee.

K. Sykes - noted there was a forestry curriculum at Wilkes-Barre College, with a transfer to Syracuse University, which could be a potential source for new student members.

G. Juergens, V. Ford - noted the WV Winter Meeting on BMP's and roads was very successful with approximately 80 attendees. The WV Div. Will be sponsoring a field tour, display, and co-sponsoring with WVFA of a luncheon at the upcoming Outdoor Writers Meeting in June in Charleston. The WV Division Is also looking into selling another print for fund-raising purposes.

I. Perdue - reported the MD-DE Division had joined together with a group of forestry organizations in MD called the "Partnership for Sustainable Forestry", which had sponsored a legislative dinner featuring Dr. Patrick Moore as keynote speaker. The Partnership has also recently conducted a public opinion-poll to counter a negative opinion poll conducted by an environmental activist.

R. Bauer - noted the next PA Div. meeting will be conducted jointly with the Wildlife Society, Fisheries Society, and Soil and Water Conservation professionals. The topic will be forest health and the changing PA landscape.

K. Jolly - reported the Awards Committee had selected two very deserving winners for the 2001 Allegheny Awards, and requested increased Div/Chapter award nomination participation for 2002.

Adjourn:

Being no further business, K. Kane proclaimed the Executive Committee meeting adjourned.

General Business Meeting Minutes February 28, 2002

Ken Kane conducted the general business meeting, providing the membership a synopsis of the Executive Committee discussion items from February 26. The following additional business items were discussed at the General Business Meeting:

Convention Bid:

It was agreed that the Allegheny would take the steps necessary to solicit a bid to host a National Convention in 2005. An Ad-hoc Committee to work on the proposal was organized, with K. Steiner selected as Chair.

WVU Student Re-payment of Travel Funds:

W. Wolfe generously volunteered to donate \$500 to the Allegheny to cover the \$500 travel stipend provided to WVU last year (the stipend was requested to be returned to the Section, since it was not used for travel due to the unfortunate events of September 11, 2001).

E-Mail Newsletter:

A suggestion was put forth to explore the possibility of producing an e-mail newsletter as a budget saving measure. K. Kane advised that the Exec. Committee would look into the pros/cons of an e-mail newsletter, and determine the feasibility of implementing the idea.

Adjourn:

Following the discussion of these additional items, and the previously mentioned Exec. Committee items, K. Kane adjourned the meeting.

Congratulations to WVU Student Award Winners



WVU student yearbook editors Karen Cox (left) and Michael Pavlis (center) won second place in the National SAF Student Year Book Award Competition. Allegheny SAF Chair Ken Kane presented their award at the Winter Meeting.



WV's MaryAnn Fajvan and Tony Scordina were presented with the second place award for 2000-01 National SAF Outstanding Student Chapter. Fajvan accepted the award on behalf of Linda Gribko.

Silviculture News

By Mary Ann Fajvan, Forest Science Coordinator, Allegheny SAF

WANTED: More Regeneration

One of the most complex silvicultural issues in our region is the effect of white-tailed deer browse on forest structure and development. Selective browsing by deer causes reductions in woody and herbaceous species diversity, richness, and height structure. Many forest communities become dominated by unpreferred and browse-resilient species. These alterations in forest vegetation also negatively affect the habitat structure of other wildlife species. Deer populations that are above carrying capacity create an additional environmental variable to be considered in silviculture. Deer browsing confounds our treatments by significantly altering the predicted outcome. How many of us have watched helplessly as deer munched oak regeneration under our carefully planned shelterwood?

Deer populations thrive in landscapes consisting of a mosaic of fields and woodlands, typical of the heavily fragmented eastern United States. For the past 30 years, harvesting of maturing, second-growth hardwood forests has created another habitat dimension: an easily accessible food source. Many harvests remove enough basal area to cause the development of new forest floor

vegetation. In a heavily forested landscape, harvested areas attract high deer concentrations, and the resultant heavy browsing can alter the development pathway of the new forest. However, if a forested area is large enough and deer densities not excessive (< 20 per sq. mile), concentrated browsing in the harvest may cause a reduction in browsing pressure in adjacent uncut forest. Useful guidelines for determining potential deer impacts when planning harvests can be found in Marquis et al. (1992).

Consideration of deer impacts must be an integral component of silvicultural systems. Unless a landowner has money for fencing and/or herbicides, regeneration harvests can produce undesirable results. Another strategy is to think beyond stand boundaries to successfully meet our objectives. Forest managers of large landholdings may be able to concentrate regeneration harvests in certain portions of the forest and relieve browsing pressure in other areas. However, typical private forest woodlots are small and landowners cannot afford fencing. The only solution is to increase hunting pressure and to convince hunters to practice quality deer management: shoot more large doe and only larger/older bucks. A recent article in *Audubon* (March, 2002 issue) outlines the national deer "mismanagement" issue and applauds Pennsylvania's recent efforts to educate hunters, not only about too many deer, but about the negative impacts that the skewed sex ratio has on the quality of the population. The Pennsylvania Game Commission has educational materials available, including an excellent video outlining the hunter's role in ecological deer management. Educating landowners about deer management must be included as part of our efforts to practice sustainable forestry. ☞

References:

- Marquis, D.A., Ernst, R.L. and S.L. Stout. 1992. Prescribing silvicultural treatments in hardwood stands of the Alleghenies (revised). Gen. Tech. Rep. NE-96. USDA Forest Service, Northeastern Research Station. 101 p.
- Williams, T. 2002. "WANTED: More Hunters". *Audubon*. Vol. 104(2): 43-51.

Musser Forests

Northern-Grown Tree Seedlings



Pine: Austrian, Balkan, Japanese Black, Pinyon, Mugho, Ponderosa, Red, White, Virginia
Spruce: Black Hills, Blue, Engelman, Norway, Serbian, White
Fir: Balsam, Canaan, Concolor, Douglas, Fraser, Grand
Hemlock: Canadian, Western
Birch: European, Japanese, Gray
Dogwoods: Chinese, Gray, Silky, Siberian, White
Locust: Black, Bristly, Honey
Maples: Norway, Red, Silver, Sugar
Oaks: Black, Bur, English, Pin, Scarlet, Sawtooth, Red, White, Swamp, Willow
Button Bush, Catalpa, Cherry, Red Cedar, Ginkgo, Poplar, Sumac, Serviceberry, Viburnums

Write, phone, fax or e-mail for our wholesale list
E-mail: 85@musserforests.com

Dept.
85-D **MUSSER FORESTS, INC.**
PO Box 340 • Indiana, PA 15701
(724) 465-5685 • FAX (724) 465-9893

Next newsletter deadline is March 15, 2002

Send articles in the form of Microsoft Word documents and e-mail to:

ansaf@paonline.com

Diversity in the Allegheny SAF

By Linda S. Gribko, Charles J. Newlon, and Cecile M. Stelter

Last year, I appointed a task force to probe the question of why is the Allegheny SAF lacking in cultural diversity. The task force consisted of Linda Gribko, Charlie Newlon, and Cecile Stelter. Their complete charge is contained in their report. This was a difficult task, one that has vexed many organizations with its complexity. They were given no resources and a short time frame to work with. The results contain considerable insight. It should come as no surprise that their efforts yielded more questions than answers. It's that type of problem. It's a document well worth reading. And, it's a start. Thank you Cecile, Linda, and Charlie.

Mike Lester

Executive Summary

Allegheny SAF Chairman Michael B. Lester asked the authors to answer four questions about the low number of women and people of color in the Allegheny SAF and what can be done to improve the situation. This paper investigates the apparent reasons for the low numbers, the barriers to joining, barriers to remaining as members, and recommends methods to improve the situation.

The Challenge by Lester

1. Why are there so few women and people of color in the Allegheny SAF?
2. What are the barriers to entry into the Allegheny SAF for women and people of color?
3. What are the barriers to retention of women and people of color?
4. What can we do to remove those barriers?

The Answers to Lester's Questions

Question 1. Why are there so few women and people of color in the Allegheny SAF?

For a number of reasons, there is a weak pipeline supply of prospective foresters to join the profession much less join the Allegheny SAF.

- a. Few members of the public understand what a forester does.
- b. Many people feel it is wrong to cut trees.
- c. High school biology textbooks carry much more information on tropical deforestation than on management of North American forests. Very little is presented on the wide spread dependency on forest products by a large factor of populations worldwide.
- d. Fewer and fewer people live in rural areas and have little chance to grow up knowing the needs and uses of a forest.
- e. Traditional roles of foresters are now shared among more professions.
- f. The forestry profession does not command high salaries.
- g. Some parents of women, and of those of color, see forestry as field-oriented work and guide their children away from such jobs toward higher paying professions.
- h. Too few foresters get involved in promoting forestry, let alone working with the education of teachers or appearing in classrooms.

Question 2. What are the barriers to entry into the Allegheny SAF for women and people of color?

The barriers to joining SAF are significant.

- a. Some women, especially those just starting in the profession, cited membership costs as a prohibitive factor to joining SAF.
- b. Some college students join SAF and other natural resource professional organizations with the idea that it "looked good on a resume," or to meet professionals who might help them land a job, and they drop membership after landing a job.
- c. Some women see membership as "part of the job" and not as some of their male counterparts do who see it partly "in a social sense." Perhaps this is because there are few or no other women at many of the SAF functions.
- d. Little is done to mentor prospective members, much less women and people of color. Would white males be comfortable with an opportunity to mentor women and people of color?

(Continued on page 22)

Question 3. What are the barriers to retention of women and people of color?

There are significant barriers to people women and people of color.

(Some of these barriers – such as a, b, and c – apply to all young people.)

- a. There is a low level of support by employers for members of professions to be given the time and help with the travel costs to attend meetings. This is especially true for those new to their career.
- b. Many employees in entry-level positions feel they can't afford the cost of attending SAF functions especially when the registration costs are high and lodging costs are involved. They may also be reluctant to leave their "new" position, even for a few days, while still in training or on probation.
- c. Two profession families, especially early in their careers, often find little extra time and money for one of them to devote to SAF functions.
- d. People of color and women find few in the predominantly white male membership with like backgrounds, experiences, or who take any effort to be sure they are made to feel welcome in any and all aspects of SAF activities.
- e. Many SAF meeting organizers do not think to seek out women and people of color as speakers. Whatever the reason, there are few examples to make women and people of color see others speaking to SAF meetings and thus do not see any chance for them to more fully participate.
- f. Some women and people of color get volunteered to fill committee positions, or to run for SAF offices, without a graceful way to decline the opportunity when they don't want it. This is a two-edged sword. Members want to include women and people of color in such positions because they want the diversity. Many women and people of color want to become involved, but not as a token, and not before they are ready, nor before they can afford the time or money to be involved.
- g. Some women have found that they get volunteered and involved in so many SAF activities that they get burned out. They withdraw from involvement, and membership, because they feel over-exposed.
- h. Some feel there is a lack of general acceptance within the profession (not necessarily within the Allegheny Section) that deters people from participating more.
- i. Backlash at the efforts to attract women and minorities to join SAF are still common. A good example is the controversy over the Diversity Scholarships to the 2000 National Convention. Many efforts are too overt and tend to embarrass or isolate the people they are intended to include.

Question 4. What can we do to remove the barriers?

We must provide greatly improved support and action by local members, employers, by Chapters, Divisions, Allegheny SAF and National SAF if we want to change the situation. What can you do to attract more people to the profession not to mention women and people of color?

A. Ask these questions.

- a. Are women and people of color given adequate support from their employers to participate? Are they given time off to travel and/or financial resources to help defray the costs of meeting attendance?
- b. Are most women and people of color more often just beginning their careers? Do they have less time and resources to participate because of this factor?
- c. Do the women, in particular, have family responsibilities that make it difficult to travel and participate? Are their careers of secondary importance (in the family or to them personally) making SAF seem to be an optional expense?
- d. Are the older members of SAF less comfortable developing a mentor relationship with a young woman or a minority member? Most active and longstanding participants in SAF probably found a personal connection with the group early on. Is there any way to enhance mentorship?
- e. Do women and people of color feel comfortable in general at meetings where they are clearly in the minority? Are they included in all aspects of meeting activities, including the more social aspects? Are female and minority speakers included on all of the program agendas?
- f. Is there a general lack of acceptance within the profession (but not necessarily within then Allegheny Section) that deters people from participating more? What can Allegheny SAF do to make their acceptance of everyone more apparent?

- g. Many efforts are too overt and tend to embarrass or isolate the people they are supposed to help include. Are there more subtle ways the membership of the Allegheny Section can encourage women and people of color to participate?
- B. Get personally involved. Promote education about forestry and about the profession. Improve your level of personal participation in education programs.
 - a. Work with the K-12 District Science Coordinator. Find out what is being taught in your school district about forestry. What are the requirements that teachers must meet? Then figure what you can recommend and provide to help teachers meet their educational requirements through forestry projects. Offer to help as necessary. Work to inform teachers about forestry and environmental programs. Investigate the feasibility of using the Forestry Education Kits being developed by the Oregon SAF and the Oregon Women in Timber organization.
 - b. Investigate what resources your local library and school libraries have available that promote and explain the practices and profession of forestry. Make sure they have copies of some of the industry, State and Federal forestry publications that you have in your office.
 - c. Seek out ways to promote forestry in your area through speaking at service organizations, inner city schools, writing articles, radio, and TV appearances.
 - d. If you aren't comfortable speaking, then join Toastmasters or otherwise improve your comfort level.
 - e. Become involved in at least one of these. Envirothons, FFA or 4-H forestry programs, PLT, Project Wild, Project Wet, Boy and Girl Scout Programs, Boys and Girls Clubs.
 - C. What can Allegheny SAF leadership do to remove the barriers?
 - a. Survey Allegheny membership for recommended actions.
 - b. Urge the membership to become more personally involved with educational and outreach programs.
 - c. Urge members to personally remove barriers.
 - d. Include women and people of color in SAF formal and informal activities.
 - e. Provide more frequent, more local, and less expensive SAF functions.
 - f. Work to involve women and minorities in SAF presentations, planning sessions and functions all levels. Do this without being overt or causing embarrassment.
 - g. Recognize or otherwise reward the members for becoming more involved in reducing barriers.
 - h. Encourage women to investigate other groups that might help to bring women foresters together such as the PGC BOW (Becoming an Outdoors Woman) and NWTF Women in the Outdoors, and possibly to become SAF liaisons with these groups.

Conclusion

The percentage of women in the Allegheny SAF is far less than representative of the population, about 10%, and among people of color, it is woefully low, less than 1%. We can, and must, welcome more women and people of color into our profession and as SAF members if we hope as an organization to accurately represent our profession. To do this there are many steps to take.

These steps include:

- Working to improve understanding about the profession and the importance of forestry among the public.
- Becoming involved in educational efforts.
- Working with youth organizations.
- Making women and minorities feel welcome at meetings both in SAF affairs but socially too.
- Involving women and people of color in Chapter, Division and Allegheny SAF offices and as speakers on a willing basis with out embarrassment.
- Actively mentoring all new members, even though their experiences and background may be very different than our own.

Linda S. Gribko, PhD is an Assistant Professor of Forestry, West Virginia University

Charles J. Newlon, USDA-FS (Ret.) is an Adjunct Professor of Forestry at Delaware State University, a historically Black University

Cecile M. Stelter, is Service Forester, DCNR, Bureau of Forestry, Franklin, PA

All are members of the Allegheny SAF

Coming Events

May 2002

- 4-7 SAF Leadership Academy, Nebraska City, NE. Louise Murgia 301-897-8720 ext 118 or murgial@safnet.org
- 20-21 "Principles of Wetland Design," Penn State Center for Watershed Stewardship, University Park, PA, Drs. A. Cole and K. Tamminga, 9.5 SAF CFE Category I. Call 814-863-1113

June

- 15 **Deadline for articles and photos for Summer 2002 *The Allegheny News***
- 19-21 Allegheny SAF Summer Meeting, "History in the Making," Gettysburg, PA. See program and registration information on page 15.
- 20-21 Council for the Research & Reclamation of Disturbed Land in PA Annual Meeting, Earth Conservancy Bldg., Ashley, (near Wilkes-Barre) PA. Call Todd Lawton 814-385-6661 ext 12 or email Todd.Lawton@gen.pge.com

July

- 15-19 17th North American Forest Biology Workshop & Western Forest Genetics Association, Pullman, WA "Rocky Mtn. Ecosystems: Diversity, Complexity and Interactions." John Bassman 509-335-5296 or bassman@mail.wsu.edu

September

- 15 **Deadline for articles and photos for Fall 2002 issue of *The Allegheny News***

October

- 5-9 SAF National Convention, Winston-Salem, North Carolina, "Forests at Work"

December

- 15 **Deadline for articles and photos for the Winter 2002-03 issue of *The Allegheny News***

February 2003

- 19-21 Allegheny SAF Winter Meeting, "NC PA: A Model for Multiple Use Management" Genetti's Hotel, Williamsport, PA.

April 2003

- 3-6 or 10-13 PA SAF Division Joint Meeting with Wildlife and Fisheries Societies

Future Allegheny SAF Meetings

2003 Summer - PA Rothrock Chapter

Allegheny SAF Committee Chairs

Auditing*

Ronald J. Sheay
1628 Prospect Street
Trenton, NJ 08638
(h) 609-771-8301

Awards*

Kenneth W. Jolly
1220 Youngs Farm Road
Annapolis, MD 21403
(o) 301-464-3065
(h) 410-263-1989
kjolly@dnr.state.md.us

Communications*

Charles J. Newlon
2 Irving Lane
Wallingford, PA 19086
(o) 302-739-5195, Tuesdays
(h) 610-872-6019
cbnewlon@home.com

Continuing Forestry Education Coordinator*

Mark Vodak
PO Box 231 Cook College
Rutgers University
New Brunswick, NJ 08903
(o) 732-932-8243
(h) 609-758-9449
(f) 732-932-3222
vodak@aesop.rutgers.edu

**Forest Health and
Productivity (ad hoc)**
Kurt W. Gottschalk
USDA Forest Service Lab
180 Canfield Street
Morgantown, WV 26505
(o) 304-285-1598
(h) 412-627-4161

Forest History (ad hoc)

Ronald J. Sheay
12 Glenwood Lane
Stockton, NJ 08559
(h) 609-397-7886
(f) 609-882-2243

Foresters Fund (ad hoc)

Earl A. Higgins
210 E. Bennett Avenue
Wildwood, NJ 08260
(h) 609-523-0208

Forest Science Coordinator*

Mary Ann Fajvan
Div. of Forestry WVU
PO Box 6125
Morgantown, WV 26506
(o) 304-293-3411, ext. 2423
(h) 304-892-4515
(f) 304-293-2441

Membership*

Ken Kane
103 Tionesta Avenue
Kane, PA 16735
(o) 814-837-9391
(h) 814-837-8357
(f) 814-837-9633

Nominations*

Mark Webb
11021 US Route 6
Union City, PA 16438
(o) 814-663-5393
(f) 814-663-4408
mkrwebb@erie.net

Policy & Legislative (PLAN)*

Timothy A. Kaden
724 Green Winged Trail
Camden, DE 19934
(o) 302-739-4811
(h) 302-697-7066

Program*

Douglas Ostergard
PO Box 284
South Main Street
Pleasantville, PA 16341
(o) 814-589-7143
(h) 814-589-7143
(f) 814-484-7563

Student Coordinating (ad hoc)

Kim C. Steiner
Forest Resources Lab
Penn State University
University Park, PA 16802
(o) 814-865-9351
(h) 814-234-8754

Student Quiz Bowl

Elizabeth Brantley
Penn State Mt. Alto
1 Campus Drive
Mt. Alto, PA 17237
(o) 717-749-6200
(h) 717-337-1284
(f) 717-749-6069
eab8@psu.edu

Tellers*

Susan L. Stout
US Forest Service
PO Box 267
Irvine, PA 16329
(o) 814-563-1040
(h) 814-726-2023
(f) 814-563-1048
[sstout@ne_wa@fs.fed.us](mailto:ss Stout@ne_wa@fs.fed.us)

*Standing Committees

Allegheny Society of American Foresters

Officers

Chairman
Kenneth C. Kane
103 Tionesta Avenue
Kane, PA 16735-1236
(o) 814-837-9391
(h) 814-837-8357
gtmake@penn.com

Chairman-Elect
Robert W. Bauer
13483 Old Route 8 N
Titusville, PA 16354
(o) 814-432-3187
(h) 814-827-2321
(f) 814-437-5122
rwbauer@pgc.state.pa.us

Secretary/Treasurer
Kenneth W. Jolly
1220 Youngs Farm Road
Annapolis, MD 21403
(o) 410-260-8502
(h) 410-263-1989
(f) 301-464-0462
kjolly@dnr.state.md.us

Past Chairman
Michael B. Lester
244 Indian Creek Drive
Mechanicsburg, PA 17050
(o) 717-787-2708
(h) 717-763-7072
(f) 717-783-5109
mlester@dcnr.state.pa.us

Executive Committee

Francis J. Hennion
145 Davis Road
Franklin, NJ 07416
(o) 973-827-1325
(h) 973-827-6742
mandfhen@aol.com

Jack L. Perdue
5112 Main Street
Grasonville, MD 21638
(o) 410-260-8505
(f) 410-260-8595
jperdue@dnr.state.md.us

Karen J. Sykes
PO Box 4015 Sc
Morgantown, WV 26504
(o) 304-285-1532
(f) 304-285-1505
ksykes/na_mo@fs.fed.us

Howard G. Wurzbacher
17374 N. Main Street Ext.
Titusville, PA 16354
(o) 814-484-9954
(h) 814-589-7538
hwurzbache@state.pa.us

Executive Director

Jack Winieski
PO Box 699
Dillsburg, PA 17019-0699
(o) 717-432-3646; (h) 717-432-3646
(f) 717-432-3646
ansaf@paonline.com

Council Representative

Timothy A. Kaden
724 Green Winged Trail
Camden, DE 19934
(o) 302-739-3423
(h) 302-697-7066
(f) 302-739-3817
tkaden@state.de.us

Division Chairs

Maryland/Delaware
Donald Van Hassent
517 Bay Hills Drive
Arnold, MD 21012
(o) 410-260-8504
(h) 410-757-5539
(f) 410-260-8595
dvanhassent@dnr.state.md.us

New Jersey
Gregory S. McLaughlin
1312 Old York Road
Robbinsville, NJ 08691
(o) 609-984-0062
(h) 609-259-8122
(f) 609-984-1427
gmclaugh@dep.state.nj.us

Pennsylvania
Ned R. Karger
305 Kinzua Avenue
Kane, PA 16735
(o) 814-837-6941, ext. 21
(h) 814-837-6819
(f) 814-837-8401
nkarger@collinsco.com

West Virginia
Glen A. Juergens
PO Box 210
Marlinton, WV 24954
(o) 304-799-4334
(h) 304-799-6965
(f) 304-799-6820
gpjuergens@neumedia.net

Chapter Chairs

Keystone
Craig T. Houghton
Penn State Mt. Alto, Campus Dr.
Mont Alto, PA 17237
(o) 717-749-6239
(h) 717-532-3019
(f) 717-749-6069
cth2@psu.edu

Northern Hardwood
Michael L. Hale
610 E. Main Street
Westfield, PA 16950
(o) 814-367-5915
(h) 814-367-5542
(f) 814-367-5919
halefor@penn.com

Pinchot
Robert J. LaBar
3070 Hemlock Farms
802 Mustang Court
Lords Valley, PA 18428
(o) 570-775-9741
(f) 570-775-9043
forestry@td.net

Plateau
Christopher J. Guth
296 Meadow Road
Seneca, PA 16346
(o) 814-463-7701
(h) 814-676-5477
(f) 814-463-7311

Rothrock
Scott R. Cary
Road 2, Box 488A
Northumberland, PA 17857
(o) 570-473-7237
scary@uplink.net

Valley Forge
Richard H. Widmann
333 Calvert Road
Merion Station, PA 19066
(o) 610-557-4051
(h) 610-664-2123
rwidmann@fs.fed.us

Western Gateway
Robert E. Schweitzer
139 Highview Court
Ebensburg, PA 15931
(o) 814-472-1872
(h) 814-472-5207
(f) 814-472-1876