

The Allegheny News



Allegheny Society of American Foresters
Winter 1997-1998

**THANKS TO COLLEEN,
THE PAGE YOU'RE NOW READING
MAY ALSO APPEAR AS
A CEREAL BOX, A CHECKERBOARD &
NEXT YEAR'S NOTEBOOK PAPER.**



A few years ago, America's Forest and Paper People made a commitment: recover 40% of America's paper for recycling by the year 1995.

With the help of Colleen and millions just like her, we accomplished that goal two years

ahead of schedule. Today, many paper products are being recycled again and again.

Now we're committed to recycling 50% of U.S. paper by the year 2000. Colleen already knows the important part she's going to play.

For more information, call 1-800-878-8878.

**Westvaco
AMERICA'S FOREST
AND PAPER PEOPLE**

IMPROVING TOMORROW'S ENVIRONMENT TODAY

This issue of The Allegheny News is printed on paper donated by Westvaco

The Allegheny News

Volume 6, No. 4

The official publication of the Allegheny Society of American Foresters. Published four times annually.

Deadline for articles is December 15, March 15, June 15 and September 15. Subscription rate included in the annual Allegheny Society dues.

The mission of the SAF is to advance the science, technology, education, and practice of professional forestry in America and to use the knowledge and skills of the profession to benefit society.

P.O. Box 699 • Dillsburg, PA 17019-0699

Editor: Jack Winieski

Layout: Catherine Winieski Carter

Table of Contents

Chairman's Corner	1-2
Charles T. Albert, Jr. - 1948-1997	2
Arlyn Perkey Receives SAF Award	2
Tim Kaden Elected National HSD Chair	2
New WVU Forestry Director	3
Francis X. Kennedy - 1923-1997	3
New Caption Contest Entries	3
Memo from Chair-Elect Mike Lester	4
Allegheny & PA Division Election Results	5
Pinchot Chapter Recognizes Knox	5
Silent Auction Donations Needed	5
Mt. Alto Timber Sports Perform at Fair	6
1997 MD "Logger of the Year"	7
Penn ACF Prepares Plan for Frick EE Center	7
Forbes Art Contest Open to Students	7
NJ Fall Forestry and 4-H Festival	8
WV "Cruiser" Receives SAF Award	8
Allegheny SAF Winter Meeting Registration	9
The National Student Quiz Bowl	10
1997 National SAF Convention Photos	10-11
Appreciation Day on the Plateau	12-13
WV SAF Winter Meeting Registration	13
Valley Forge Chapter Meeting	14
SAF Summer Meeting: Family Enjoyment	14
PA State Forest Lands Receive Certification	16
Arbor Day Proclamation 1923	17
Tax Changes Affect Private Forest Owners	18
Arbor Day Alert!	19
USFS & SAF Partner on Fragmentation	19
Coming Events & Allegheny SAF Chairs	20
Wiant Responds	20

Cover Illustration

The cover illustration is the work of John Sidelinger, Penn State School of Forest Resources Alumnus, forester, wildlife biologist and artist. The scene is one of four reproduced in a set of note cards offered for sale on page 12. Proceeds will benefit the School of Forest Resource Alumni Fund for Teaching Excellence.



Chairman's Corner

By Timothy A. Kaden
Allegheny SAF Chair

It wasn't long ago that I wrote my first Chair column for *The Allegheny News*. Here it is two very fast years later and I am writing my last Chairman's Column – it has been a great ride! Would I do it again? You bet, and I would recommend that any member with an interest in being involved in regional and national forestry issues run for the Chair-Elect position in year 1999.

It may seem trite to say that no one does this job alone, but it is so true. Many Allegheny foresters have helped, assisted and guided me through the maze of issues and obligations of this position. A few stand out (apologies to those I miss) however, I want to thank each of you that has lent support and encouragement. First, **Jack Winieski**, our Executive Director, has always been there. He has kept me on track and still does. My sincere congratulations to Jack for being elected a SAF Fellow this year. To **Mike Lester**, **Al Knox**, **Mark Deibler**, **Tony Santoli**, and other members of the Pinchot Chapter who did such an outstanding job on our 75th Anniversary Celebration meeting, thank you – you made us look good!

The Student Mentor Program, on my agenda for the past two years (and still is), is off the ground and beginning to operate. A big thank you to the effort of the faculty of our Forestry Schools, Division and Chapter Chairs and their committees. A special thanks to **Kim Steiner** who has given me insight to the workings of the student body, and for all his work with the Allegheny and National Student Quiz Bowl. As for the students of Penn State and West Virginia, winners in the Allegheny Quiz Bowl competition, you've made us all proud of your performance in the national competition, and the professional way you conducted yourselves at the National. My hat is off to you and your advisors... it is a pleasure to know you.

I could go on, but I will stop except for two people who have always been there for advice and consultation – **Roger Sherman** and **Ron Sheay** – two people that keep giving. Thank you my friends. By now, all of you should have received a copy of our updated 75-year history of the Allegheny Society (if not, give a call to Jack). Thanks to Ron, with some help from Division and Chapter members, we now have a reference source to our legacy. Well done.

Some goals and objectives lined out for these two years weren't accomplished, but I'm sure **Mark Webb** and the new Executive Committee will prioritize an agenda that considers issues important in maintaining Allegheny SAF's

Members and Views

(Continued from page 1)
continued vitality.

All in all, it has been a great experience. The three House of Society Delegates (HSD) meetings that I was privileged to attend have impressed me with the dedication of foresters across the country in communicating the sciences and policies of the forestry profession. These meetings are the core of what we do at the Society level. The HSD delegates speak their mind and let the National Council and staff know first hand what are the grass root issues.

As I leave this office, I am not going very far from service to my profession. I have agreed to Chair the HSD for 1998. It was a humbling and satisfying feeling to be nominated and elected to this position by members of the HSD. I sat in on the December Council meeting and was impressed at the demeanor and intense interest with which the District Representatives and National staff discussed issues of interest to our professional Society. In the meantime my job as HSD Chair has resulted in an large increase of mail from around the country – from “conveners” gathering grass roots concerns for consideration in the 1998 HSD agenda to national office memos and copy. I’ll be challenged.

I remind all that in two years, SAF will be celebrating its first 100 years of existence; get on board the party train beginning in 1999. For this year though, begin by getting involved in helping plan for your local celebration.

To Mark Webb, incoming Chair, “enjoy it my friend... it is a time you will never forget.” ▲

**Contact Allegheny News
Editor Jack Winieski
by e-mail:**

ansaf@paonline.com

**Next newsletter deadline
is March 15, 1998**

Charles T. Albert, Jr. 1948-97

Charles T. Albert Jr., former member of SAF, died September 28, 1997 at his home in Manalapan, New Jersey. He received his BS in Forestry at Penn State and has worked as a forester with the New Jersey Department of Environmental Protection since 1969.

Mr. Albert was the forestry advisor for Project Learning Tree, was involved in teaching seminars on conservation issues for students and teachers, directed National Arbor Day programs, was in charge of the Tree City Awards and was a member of the Sayreville Environmental Commission.

He is survived by his wife Pamela (Zach) and son Kurt. Memorial contributions are requested to be made to the Lyme Disease Research Foundation, One Financial Plaza 18th floor, Hartford, CT 06103-2601. ▲

Arlyn W. Perkey Receives National SAF Award



Allegheny SAF member **Arlyn Perkey** was honored at the National Convention Awards Luncheon in Memphis, Tennessee on October 5, 1997, by being awarded the **SAF Technology Transfer and Extension Award**. The award recognizes a member's outstanding achievements in facilitating the field application of research through technology transfer, implementation, and extension.

The award recognizes Arlyn's unique ability to take forest technology concepts and practices and present them in easily understandable terminology. His approach had proved meaningful to both

young and experienced foresters, as well as forest landowners. He has taken the time to work one-on-one with interested individuals and groups to strengthen their understanding of his novel concepts, and stimulating them to improve and develop forest management techniques.

From his position as Forest Resources Management Field Representative with the U.S. Forest Service (USFS), he has influenced many non-industrial private forest (NIPF) landowners and public land managers in the management for both timber and various non-timber values, including wildlife, aesthetics, water quality, and recreational opportunities.

Probably best known for hands-on workshops in conjunction with his 1994 publication, “Crop Tree Management in Eastern Hardwoods”, Arlyn also has periodically produced “Forest Management Update” since 1984 -- a source of current forest management information in very a understandable format. Approximately 4,500 copies are presently being sent to forest land owners and managers, primarily NIPF's and forest consultants in the USFS-sponsored, State-administered, Stewardship Incentive Program. ▲

The photo of Dr. Kenneth L. Carvell, found on the cover of the Fall 1997 issue of The Allegheny News, was taken by Earl Higgins of the Valley Forge SAF Chapter.

Tim Kaden Elected National SAF HSD Chair

At the House of Society Delegates (HSD) meeting in Memphis, Tennessee this fall, **Tim Kaden**, Chair of the Allegheny SAF State Society was elected as Chair of HSD for 1998. As Chair, Tim will coordinate and facilitate the ideas, opinions, and information of the 34 SAF State Society Chairs who, as an advisory board to the Council, bring "grassroots issues of concern to the body to be discussed, prioritized and forwarded to Council for consideration and action.

HSD representatives communicate all year, preparing the HSD meeting agenda held prior the annual National Convention. Through a "convener" structure made up of five groups of State Society representatives, each of five convener group leaders receives suggestions from the HSD Society representatives in their area, prioritize issues of concern, and forwarded them to an internal committee for agenda consideration.

The HSD agenda, has become an integral part of SAF structure, communicating the accumulated concerns of members to the Council for consideration. ▲

The Summer 1996 issue of the Allegheny News, page 17, carries a brief history of the House of Society Delegates (HSD). The body's origin dates back to the mid-1960's when in 1965 the House of Section Delegates was officially sanctioned, establishing a "two-house system of SAF government." Ed.

New WVU Forestry Director

Dr. Joseph F. McNeel has been named Director of the Division of Forestry of West Virginia University's College of Agriculture, Forestry, and Consumer Sciences. He joined the Division in mid-September. He previously held the position of associate professor on the Faculty of Forestry at the University of British Columbia.

McNeel is not unfamiliar with the college's forestry program, having received his BS in Forest Resources Management from WVU in 1979. His master's and doctoral degrees in Industrial Forest Operations are from Virginia Polytechnical Institute in 1981 and 1984 respectively.

In 1984 McNeel began his teaching career as an assistant professor with the Extension Forest Resources Department of the University of Georgia; in 1989 he joined the Faculty of Forestry at the University of British Columbia. In 1992, he took a dual role as an associate professor with the College of Forest Resources of the University of Washington while simultaneously working as a research engineer with the USFS Pacific Northwest Research Station in Washington State.

Outside of academia, McNeel has served as secretary of the SAF G1 Working Group on Forest Production and Utilization, has acted as scientific advisor to the Finney Adaptive Management Area of the USFS, and is currently a member of the Silvicultural Practices Committee of Forest Renewal, British Columbia. ▲



Francis X. Kennedy 1923-1997

Francis X. Kennedy, 74, of Williamsport, PA died November 17, 1997. He was an active SAF member for 47 years, holding offices in many of the Pennsylvania SAF Chapters. He retired from the Pennsylvania Bureau of Forestry in 1989 as District Forester of the Tiadaghton Forest District, having also served on the Sproul, Elk, Kittanning, and Michaux Forest Districts during his long career.

Kennedy received a BS in Forestry from Penn State University in 1949. He was a member and president of the Tau Phi Delta Forestry Fraternity, president of the Forestry Society, and a member of the Penn State Club. He was also a member of the PA Forestry Association, Nature Conservancy, Audubon Society, and a director of the Lycoming Conservation District.

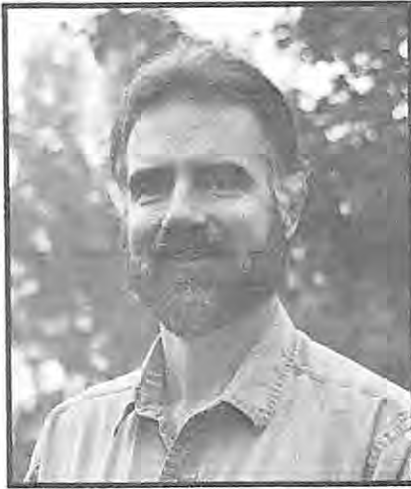
Active in the local community as a volunteer at the Divine Providence Hospital and St. Anthony Center, he was a charter member and past president of the Loyalsock Lions Club; member of the American Legion Post 104, Lycoming Men's, Republican, and Stroops Clubs; Knights of Columbus; and director of the local Tom Rider Park. He is survived by wife Jeannine, daughter Evelyn and son Patrick.

An army veteran of World War II, Kennedy served with the 10th Mountain Division, Company I, 85th Platoon of the Famed Ski Troopers and received a Bronze Star, Combat Infantry Badge, and the Purple Heart. ▲

New Caption Contest Entries

The Fall issue of *Allegheny News* had a picture of SAF President **Harry Wiant** demonstrating the one-handed snapping turtle hold -- with descriptive captions. Two new suggestions surfaced:

- "Which Has the Bigger Bite?" (anonymous from NJ)
- "Fetch Me a Sharp Knife and a Pot of Boiling Water; I'll Demonstrate Practical Ecosystem Management" (students of Billy Ray Vodak)



To: Allegheny SAF Members From: Chair-Elect, Mike Lester Topic: As I See It

First, I thank you for your support in the recent Allegheny election of officers. I am excited and honored to serve the Allegheny SAF as Chair-Elect in 1998 and 1999, and as your Chair starting in 2000.

As Chair-Elect, my primary role will be to support our Chair, **Mark Webb**. In this role, my goal is to improve my understanding of the needs of the whole Allegheny membership, so that you will have an effective Chair in the years 2000-2001. Finally, I am committed to promote the profession of Forestry throughout the region.

In my ten years as a member of our five-state Society, I have always been impressed with the technical competence of the membership, and the can-do attitude I see everywhere. Members are always stepping up to the challenge of our Winter and Summer technical meetings, resulting in many educational and networking opportunities for all of us. I see some superb opportunities for our Society in that talent pool of professionals we

encounter daily, but who are not members of SAF. They have a lot to offer when we work with them professionally; that same talent contributing to the resolve of SAF issues would be most valuable — make this the year to approach at least one of them directly, to reinstate or make application for SAF membership.

I also see superb opportunities for increased participation by a greater percentage of our present membership. Perhaps you have noticed, as I have, the same members shouldering the challenges time after time. We need to provide opportunities for new and older, less active, members to experience both personal and professional growth through greater participation in Society affairs — offices, committees, working groups, etc.

We have yet another opportunity. That is in the area of leadership. I had an interesting experience at the SAF Leadership Academy — that tremendous opportunity afforded to Division Chair-Elects which is gradually being extended to Working Group Chairs. We all took a personality test. One of the results indicated whether we were extroverts or introverts. Not surprisingly, slightly over 75% of the foresters attending were introverts. I mention

this experience because popular wisdom indicates that introverts are less likely to seek leadership roles, yet all of these folks were leaders! We desperately need our members to step forward and accept leadership positions. I have encountered many excellent SAF leaders in my career who did not enjoy the limelight. We need your skills, whether you are more comfortable in visible or less visible roles.

Finally, we need to constantly work for greater understanding of our profession. We need to be continually looking for that teachable moment. For example, asking for paper bags over plastic in the supermarket line will often provoke a comment about saving trees from being cut. Definitely a teachable moment to counter with factual growth versus cut figures and the renewability of the forest resource. Of course it would be wonderful if we always had a broader platform to explain our contribution to society. That "perfect" opportunity arises in many of our daily contacts with the public. Be a little more proactive and be our profession's spokesperson whenever the opportunity arises.

Again, I thank you for the honor and opportunity to serve the Allegheny Society of American Foresters. I'm very much looking forward to the challenge! ▲

Position Available Manager, Training Program

The Sustainable Forestry Initiative of Pennsylvania (SFI of PA) is accepting resumes for the position of *Manager, Training Programs*. The position will be located at the SFI of PA office in State College. Applicants should have at least a Bachelor's Degree in Forestry or a related field, and must be knowledgeable about and committed to the SFI program; have proven organizational skills; be computer literate; have a working knowledge of forestry; possess good verbal and written communication skills; be willing to travel throughout Pennsylvania; and be a self-starter. Compensation package includes employee benefits and a salary level commensurate with qualifications and experience. Please submit resume and salary requirements to: **Ken Manno, Program Manager, SFI of PA, 315 S. Allen Street, Suite 222, State College, PA 16801.**

1998-99 Allegheny SAF Election Results

The election results, as certified by the Tellers Committee and reported to the Chair on November 25, 1997, list the following successful candidates for offices of the Allegheny Society of American Foresters for the 1998-99 years: Chair-Elect, **Michael B. Lester**; Secretary/Treasurer, **Susan E. Lacy**; Executive Committee: **Kurt W. Gottschalk**, **Kenneth W. Jolly**, **Kenneth C. Kane**, and **Susan Stout**. **Mark R. Webb**, Chair-Elect, becomes Chair, **Tim Kaden** becomes Past-Chair.

The Tellers Committee certifies that the above election results accurately reflect our tally of the ballots counted. Thanks to all the candidates who participated – those who won and those who, in principle, agreed to offer their time in leadership roles. ▲

Tellers Committee: Kenneth Jolly, Chair, Don Van Hassent, and Jack Perdue.

PA SAF Division Elects Leaders For 1998-1999

Robert (Bob) Bauer, Assistant Regional Forester with the Pennsylvania Game Commission has been elected Chair-Elect of the Pennsylvania SAF Division for the years 1998-99. He will assume Chair of the PA Division for the period 2000-2001. Bob is a member of the Plateau SAF Chapter.

Douglas D'Amore, Program Specialist with the Division of State Forest Management, Bureau of Forestry, Pennsylvania Dept. of Conservation & Natural Resources, has been elected as Secretary/Treasurer for the 1998-99 period. Doug is a member of the Keystone SAF Chapter.

Robert J. LaBar, Forestry Consultant, will serve as PA Division Chair for the years 1998-99, replacing outgoing Chair, **Kenneth C. Kane**. ▲

Pinchot Chapter Recognizes Allan Knox at December Meeting



Mike Lester (l) presents outstanding service award to Al Knox

At the December meeting of the Pinchot Chapter, Chair **Mike Lester** presented an award to **Al Knox** for outstanding service and dedication to the Chapter. Al has served in all of the offices of the Chapter and was a key member of the Program Committee for the very successful 75th Anniversary Winter Meeting of the Allegheny Society at Matamoras, PA. He is a 40-year member of SAF, and has been a Certified Forester since the program inception.

His hand made cypress clocks and wooden pen and pencil

sets have been regular donations in support the foresters fund raffles at Pennsylvania Division and Allegheny Society meetings, and many National Conventions.

Pennsylvania State Forester **James Grace** was the speaker at this meeting held December 6, 1997 at Grey Towers in Milford, PA. He presented the background, explained the process, and reviewed highlights of the report of the independent environmental review of 1.2 million acres of State Forest Land by the Scientific Certification Systems (SCS) of Oakland, California (a more complete explanation of this environmental certification of a portion of publicly owned and managed forest land follows in a separate article).

Elections were also held at this meeting. With the promotion of Chair-Elect **Mark Deibler** to the Harrisburg office of DCNR, an election was also held for a new Chair. Election results: **Paul Kowalczyk** Chair; **James Kimokeo** Chair-Elect; **Al Knox** Secretary/Treasurer. ▲

Silent Auction Donations Needed

By Doug Turner, Forester's Fund Chair

The New Jersey Division, host of the 1998 Winter SAF Meeting, is looking for donations for the silent auction to be held for the Forester's Fund. We are looking for donations of forestry-related items or offers of services.

Items may be either new or used — used items should be either serviceable or antiques. Older text books, field guides and other such publications of interest to up-and-coming professionals are popular items, as are forester's tools and things with an historical flavor, even old photographs and drawings.

Any donation to SAF (a non-profit organization) is fully tax deductible of course. Look around at your forestry memorabilia and see what you can recycle for a cause that will be used to promote your profession. Articles may be brought to the meeting, February 11-13, in Atlantic City or may be sent to: Doug Turner, Silent Auction Committee, 232 Stockton Street, Hightstown, NJ 08520; or call him at (609) 371-1498. ▲

Mt. Alto Timber Sports Perform at Heritage Fair



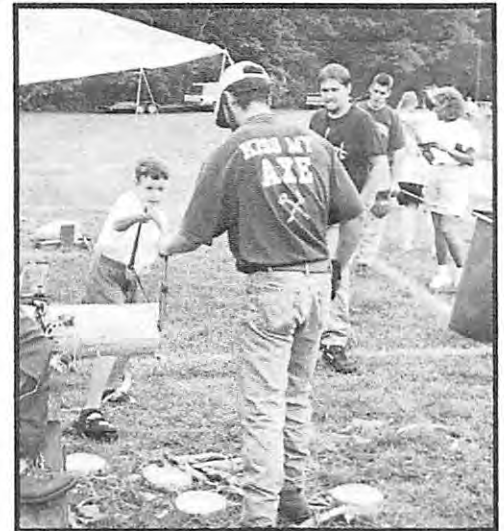
Chips fly as Historical Society members demonstrate a two-man chain saw for Mt. Alto forestry students




Dave Poe, and Matt Zawislak try their hand at an early two-man chain saw as John Fry, Katie Miller, Dave Fagley watch in astonishment

Speed chopping and cross cut sawing, bow sawing, axe throwing, chain saw safety and a speed-sawing time race between a chain saw and a competition cross cut saw – all these events were part of the activities that forestry students from the Penn State Mt. Alto Campus brought to the Northern York County Historical and Preservation Society’s Heritage Fair. The Mt. Alto Timber Sports were one of 20-some participants interacting with about 400 attendees at this “living history” event held at the Northern Elementary School grounds in Dillsburg, Pennsylvania, September 20, 1997. The hand-on displays capped a week of studies and activities in the local district emphasizing area heritage.

The forestry students were amazed at a 1943-vintage two-man chain saw that two Historical Society members brought over to try out on their logs. They were astonished when they tried to lift and run it! ▲




Matt Zawislak instructs a future forester in bow saw skills



BETTER FOREST TREE SEEDS

EDGAR H. PALPANT
Consulting Forester



"If a better system is thine, impart it; if not, make use of mine." Horace (65-8BC)

Operations:
Pal Lane
Mc Aleveys Fort, PA

Mailing:
R.D. #1, Box 709
Petersburg, PA 16669
Phone: 814-667-5088
Fax: 814-667-5089

BETTER TREES - THROUGH BETTER SEED - THROUGH RESEARCH
Specializing in Christmas Tree Management

Number Plates can be used to mark poles, doors, equipment, stalls, mail boxes, etc.

Call or write to request our new **Forestry Identification Catalog**

NUTRON NAMEPLATE INC.
Box 487-SAF
N. Olmsted, OH 44070

216-777-6660 ext. 229
Fax: 216-777-6664





1997 MD "Logger of the Year"

By Karin E. Miller

Maryland Master Logger David Earl Opel of Double "D" Logging, Frostburg, MD, has been recognized as Maryland's most outstanding logger in 1997 by the Maryland Forests Association (MFA). He accepted the award, thanking his wife Dottie and son David for their continual support. Crew members Jason Compton, Harold Schmidt and Opel's son David were also recognized for their contributions.

Opel's nomination was the result of his outstanding commitment to sound forest and business management practices. SAF's Pete Miller presented an illustrated slide show depicting the various stages of one of Opel's more difficult logging jobs, with examples of best management practices (BMP's) as taught in the Maryland Master Logger Program.

In addition to an engraved plaque, Opel was presented with a Poulan chainsaw, courtesy of Ray Fuller of J.P. Fuller, Inc., Glen Burnie, MD. MFA has awarded the Logger of the Year to recognize and promote excellence in logging practices since 1988. ▲

Penn ACF Members Prepare Stewardship Plan for Frick EE Center

By Robert LaBar, ACF

Members of the Penn Chapter of the Association of Consulting Foresters (ACF) have volunteered their services in preparing a Forest Stewardship Plan for the 476 acre Frick Environmental Center located in the Squirrel Hill Tunnel section of Pittsburgh, Pennsylvania. A 151 acre parcel was donated to the city by the Frick family in 1919 and later acquisitions brought the area to its present size. The present Nature Center was dedicated in 1979.

A Forest Stewardship Plan for any forest land is developed in four basic steps: a review of the objectives of ownership; an inventory and evaluation of the property's potential to meet those specified objectives; delineation of the property into units with specific characteristics and proposing management alternatives for each of the units based on the objectives and with probable impacts of specific activities; and finally the completed written plan, including a property map showing management units and acerages, streams, ponds, roads, trails, historical artifacts, areas and species of special concern, and other features of note, with a ten-year schedule of suggested activities as a convenient reference.

During the summer and fall, local ACF foresters **Steven Hawkes, Robert Calberg, David Ester, and Craig Ostheim** completed the field work and inventory steps of the plan. In the coming months, **Robert LaBar** will be assembling the information into a written plan. Once the plan is approved (hopefully in the spring or summer of 1998) it will be presented to Park officials in an appropriate ceremony that will include representatives of the City of Pittsburgh, the Department of Conservation and Natural Resources, and other area groups supporting the Nature Center. ▲



Barbara Balbot, Park Director, leading ACF foresters Steve Jaquith (L), and Dave Ester and others on a walk through one of the trails in Frick Park

Reginald Forbes Art Contest Expanded to Students

By Charles Newlon, Communications Committee Chair

A Student Art Category has been added to the traditional Reginald Forbes Art Contest, held annually at the Winter Allegheny SAF Meeting. The category is open to all forestry students in the Allegheny Society. Student category art works will be judged in the same art types as the Amateur and Professional categories: Photographs/Flat Art; Three Dimensional Art; and Sculpture Art.

It is hoped that this expansion will give students the opportunity to show off some of their other hidden talents, allowing them to participate in another meeting activity besides the student bowl competition. "Reggie" Forbes, the teacher, would thoroughly endorse this expanded effort to involve students!

Members, especially teachers at forestry centers of learning and those involved in the mentoring program, please make this opportunity known to the students in your sphere of influence (many students may not see registration information early enough to prepare an entry). ▲

NJ Fall Forestry and 4-H Festival Attracts Over One Thousand!

By John Benton, Supervising Forester, Div. of Parks & Forestry, New Jersey Forest Service



John Benton

The New Jersey Division of Parks and Forestry sponsored a Forest Field Day, on October 4, 1997 at the Forest Resource

Education Center in Jackson, NJ. The 9:00 a.m. to 4:00 p.m. festival logged in just over 1,000 teachers, students, and interested parents. SAF member **John Benton** noted that the 20 displays provided numerous opportunities to, "educate and promote an understanding of the forest as a natural resource, show wood as a renewable resource, and introduce tree life cycles and basic tree identification to all ages."

The NJ SAF was an active participant, as members provided leadership in hands-on learning activities: Today's Acorns = Tomorrow's Trees, "Treeture", Tree Art, Guided Forest Exploration, and Tree Seedling Planting. A portable saw mill attracted a lot of attention, since most of the children had never seen boards processed from logs. Bob Eigenrauch, from New Egypt, exhibited his chain saw artistry by carving a bear, a bald eagle, and a totem pole out of logs.

The 4-H Clubs have cooperated in the past in helping the NJ Forest Service plant tree seedlings, most recently in the area near Whiting which was severely burned; this cooperation in the sponsoring of an all-day forestry festival was a natural since both organizations have similar youth educational goals and are committed to stewardship of the land. ▲



Front row (l to r): Lori Timmons, Jon Spink, and Evelyn Inglis.
Back row (l to r): Todd Breininger, Robert Doyle, and Kyle Cunningham

WV "Cruiser" Receives SAF Award

At the Society of American Foresters (SAF) national convention in Memphis, Tennessee this year, the WVU Division of Forestry student yearbook took third prize in competition with yearbooks from forestry colleges around the country. Strict judging criteria included the quality of the yearbook as a historical record, layout and artwork, quality of written material, and interest to the reader.

Evelyn Inglis was Editor-in-Chief with assistance from editors **Lori Timmons, Jon Spink, Todd Breininger, Robert Doyle, and Kyle Cunningham**. **Dr. Ray Hicks** and **Professor Anthony Tomkowski** served as faculty advisors. Following the tradition of dedicating the publication to an individual or group who have contributed a significant role in the Division of Forestry, the 1997 "Cruiser" was dedicated to **Dr. Rosemary R. Haggett**, Dean of the College of Agriculture and Forestry at WVU. The "Cruiser," the oldest yearbook at WVU, has been published by the Forestry Club since 1938. ▲



Sowers Turns 90

David (Dave) W. Sowers, Jr. (in photo at left), 1969 Chair of the Allegheny SAF, and a retiree of Westvaco, celebrated his 90th birthday on August 17, 1997. He may enjoy hearing from his friends and former colleagues:

Apartment 338
13415 Stallones
Tomball, TX 77375



Ride the Wave!

The Changing Tides of Forestry 1998 Allegheny Winter Meeting

February 11-13, 1998
Tropicana Hotel and Casino Atlantic City, NJ

AGENDA

Wednesday, February 11, 1998

12 Noon-1:30 PM
& 4:00-6:00 Registration
1:00-4:30 TOUR Barneget Bayman's Museum
5:00-6:30 Allegheny Executive Committee Meeting
6:00-8:00 Icebreaker, cash bar "Faces of Forestry" slide show

Thursday, February 12, 1998

7:00-8:00 AM Chairman's breakfast
8:00-9:00 Continental breakfast (included)
9:05-9:30 Welcome to Atlantic City. Program Preview.
9:30-10:15 Joan Comanor, The Future of Forestry . . . The Federal perspective.
10:15-10:30 Break
10:30-11:30 Will McWilliams, Forest Resource Trends
Tom Birch, Forest Ownership Trends
11:30-12:00 Bob Bierer, Forest Industry Perspective
12:00-1:30 PM LUNCH (included) Allegheny Business Meeting
1:30-2:15 "FROM THE GROUND UP"
Panel discussion Mark Vodak Moderator
Scott Worrell New Jersey Consulting Forester
Ken Kane Pennsylvania Consulting Forester
Arlyn Perkey West Virginia Landowner
2:15-4:00 State Foresters Shifting Impacts-State Highlights
Les Alpaugh, Bill Maxey, Jim Grace
Jim Mallow, Bill Schultz, Austin Short
4:00-6:00 Student Bowl
6:00 Cash bar
6:30- Banquet

Friday, February 13, 1998

8:00-9:00 AM Continental breakfast (included)
9:00- 11:30 RIDE THE WAVE!/SURF THE NET!
The Changing Tools of Forestry, vendors will demonstrate the latest tools and technologies of the trade.
11:30-11:45 Mark Webb Allegheny Chairman Farewell



Location and Lodging

The meeting will be held in Atlantic City's Tropicana Casino and Resort. Lodging is being held and is available by contacting the Tropicana directly. Reservations are available by calling 1-800-345-8767. Please state you are attending the Allegheny SAF meeting to receive the special room rate.

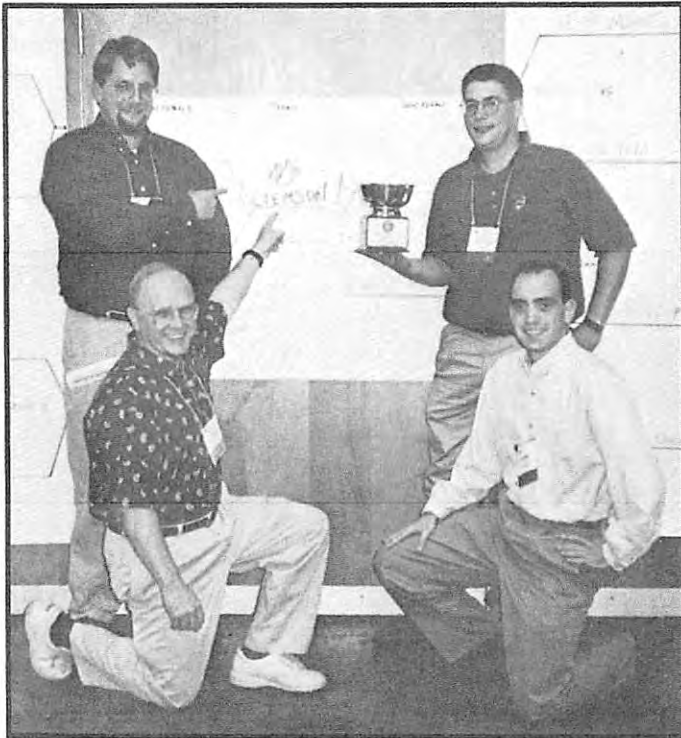
Room rates are \$58.00/night single or double occupancy. Rooms contain either 2 double beds, queen or king size bed. Room reservations must be made by January 11, 1998 and only limited numbers are available.

The food and facilities at the Tropicana are outstanding so make it a point to attend the entire conference! CFE Credits Participants who attend will receive 6.75 category 1 CFE credits.

	Number	Sub-Cost	Total	NAME _____
⇒ SAF member Conference Package *		\$135.00	_____	ADDRESS _____
⇒ Non-members		\$150.00	_____	_____
⇒ Students (registration only)		\$45.00	_____	PHONE _____
⇒ Chair's breakfast		\$15.00	_____	Make checks payable to NJSAF. Return registration to Chrissy Harrigan, PO Box 176 Gladstone, NJ 07934 NO LATER THAN FEBRUARY 1, 1998. For additional information call Craig Kane (609) 453-8696. * package includes registration, materials, 2 breakfasts, 1 lunch and the Thursday banquet.
⇒ Banquet (for spouses)		\$46.00	_____	
⇒ Bayman's museum tour		\$5.00	_____	
		Total	_____	

The 1997 National SAF Convention

Memphis, Tennessee October 4-8, 1997



The 1997 National SAF Student Quiz Bowl Winners — Clemson

The Student Quiz Bowl

After four rounds of intense competition, Clemson University forestry students won the Annual Student Quiz Bowl competition at the SAF National Convention. West Virginia forestry students, winners of the Allegheny SAF Student Bowl contest, advanced through three rounds before losing to the University of Maine team. Between 400-600 SAF members at the Convention witnessed the event. Congratulations to National Student Assembly Chair **Tamara Cushing** and committee members who planned and executed a successful, and fun laden, program. ▲



"Elvis" serenades a mesmerized SAF Convention attendee



"Puzzle Therapy" for University of Kentucky students



Bob Beanblossom and his wife give some last minute coaching to the WV students competing in the 1997 National SAF Student Quiz Bowl



John and Joyce Moser react to John's receiving the National SAF John A. Beale Memorial Award for sustained, outstanding promotion of forestry through voluntary service to the SAF

The 1997 National SAF Convention

Memphis, Tennessee October 4-8, 1997



"Clang, clang, clang went the trolley; ding, ding, ding went the bell..."
for Jack Winieski, Ron Sheay and Tim Kaden



West Virginia's Harry and Jean Wiant (sitting), and Roger Sherman with Delaware's Tim Kaden (right)



1968 Allegheny SAF Chair Benjamin B. Stout, and daughter Susan Stout



Allegheny members (l to r) Mark Vodak, Ken Jolly, Mark Webb and Kurt Gottschalk at the schedule board



Tennessee folks, Dept. of Agriculture Michael Countess, and Jack and Vivian Barrett, enjoying the exhibitor's booths

Appreciation Day on the Allegheny Plateau

By Chris Nowak, Plateau SAF Chair

At the Plateau Chapter November meeting, held at the Kane Experimental Forest and nearby Allegheny National Forest lands, 40+ members from the Northern Hardwood Chapter and other Allegheny SAF members met to acknowledge forest research and management contributions of the **Hammermill and International Paper (IP) Companies**. About one-third of the participants were past or present Hammermill or IP employees.

Recently, IP lands in northwestern Pennsylvania and southwestern New York were purchased by Forest Investment Associates (FIA), of Atlanta, Georgia. One of the objectives of the day was to review some of the history and recount some of the legacies, that we – Hammermill/IP, and the rest of the forestry community – have created together over the past few decades. Chapter members and friends took the opportunity to review the impact of Hammermill/IP contributions, particularly as it relates to the future of

forestry on the Allegheny Plateau.

Legacies in forestry can be divided into three areas: land management, professional service, and development of new knowledge through research. Hammermill/IP foresters and biologists have been leaders in all three areas. Activity concentrated on the last of those legacies, new knowledge generated through research. The group visited four active Forest Service research sites with scientists from the U.S. Forest Service's Forest Science Laboratory, Irvine, Pennsylvania, to discuss research collaborations which have occurred over the past two to three decades. Each site represented contributions in concept and/or resources from Hammermill/IP.

At the first stop, **Steve Horsley** discussed a new study of the effects of herbicide application combined with shelterwood seed cutting on non-target plant and animal communities, and acknowledged the 20+ year

partnerships in developing herbicide technology.

Standing next to a cohort of heavily deer-browsed, bonsai-like red maple, **Dave deCalesta and Susan Stout** pointed out the important contributions that Hammermill and IP folks have made in promoting responsible management of Pennsylvania's deer herd.

In a 27-yr-old third growth black cherry forest, **Chris Nowak** described a formerly closed study on the cleaning and fertilization effects on stand development. This study has been reopened as a result of IP's interest in the work. **Jeff Kochel**, an employee of both Hammermill and IP and now with FIA, gave an impromptu description of a third-growth productivity research and development program that he and others from IP had initiated over the past few years.

At a stop in a young stand dominated by pin cherry, **Todd Ristau** and **Steve Horsley** described ongoing

Woodland Notes

~ A set of 12 notecards with envelopes ~

Three each of four scenes drawn by John Sidelinger,
Penn State School of Forest Resources alumnus, forester, wildlife biologist, and artist.

Proceeds benefit the School of Forest Resources Alumni Fund for Teaching Excellence.



Woodland Notes Order Form

Name _____

Address _____

Number of sets _____

Amount enclosed (\$10 per set) _____

Make checks payable to "Penn State"
with "SFR Teaching Excellence Fund"
written in memo portion of the check.

Send to:
Penn State School of Forest Resources
Alumni Fund for Teaching Excellence
113 Ferguson Building
University Park, PA 16802

research supported by both IP and the Allegheny National Forest on the practical and biological implications of high densities of pin cherry for long-term stand development and productivity.

The last stop was at the site was a long-term study of intermediate stand culture. Chris Nowak described ongoing efforts aimed at refining thinning guidelines using on-site data and recently documented responses to thinning in a 10-year study on IP lands.

Following a brief business meeting and dinner, several members of the Chapter provided closing comments on the day, summarized as follows: we celebrated the Hammermill and IP presence on the Plateau, affirming its legacy, and envisioning a positive future by reflecting on our past; the field tour, with herbicides for regeneration, weeding, cleaning, fertilization, and young forest culture represented the full cycle of even-aged silviculture; the even-aged silvicultural system used on the Plateau for the last two decades is regularly being improved as we learn more about silviculture and the forest; and finally, through the field tour and dinner discussion, we were able to realize that the silvicultural system in place here on the Plateau is the product of the entire forest community. Hammermill and IP have been integral partners, playing a larger than normal role as collaborators, as colleagues, and as enthusiastic customers of new technologies. We affirmed that our shared past meant a common responsibility for each other and for forestry. In face of the seen and unseen changes and challenges that are ahead, one key to a positive future for forestry on the Plateau will be to carry on with this spirit of collaboration and collegiality in developing and applying new research and management information. ▲

"The best fertilizer is the shadow of a gardener."
- Anonymous

Registration WV SAF Winter Meeting February 4-5, 1998

Name _____
 Address _____
 City, State, Zip _____
 Telephone _____ Home _____

Registration Fees Includes Buffet Style Banquet

Member (Before 1/20) \$50 x _____ (# Reservations) = \$ _____
 Member (After 1/20) \$60 x _____ (# Reservations) = \$ _____
 Guest of Member \$30 x _____ (# Reservations) = \$ _____
 Student \$20 x _____ (# Reservations) = \$ _____

**SAF Ethics Guide
for Foresters & Other Natural Resource Professionals**

\$8 in advance x _____ (# Reservations) = \$ _____
 \$10 at the door x _____ (# Reservations) = \$ _____
TOTAL = \$ _____

(Make checks payable to WV Division SAF)
 Return to: Jim Mitchell, Secretary/Treasurer
 PO Box 38
 French Creek, WV 26218
 (304) 924-6266

Meeting Chair: Harry McIlvaine (304) 392-6345
 Division Chair: Barbara Breshock (304) 256-6775

**I would like to do some role playing
for a sample ethics case at the meeting** Yes _____ No _____

Basketball: WVU & Pitt Tuesday, February 3, 1998 at 7:00 PM
 Tickets at Coliseum door \$12 - \$14 each
 Group (>20) = \$7 each
 Count me in with the group Yes _____ No _____

**A block of rooms has been reserved at the Holiday Inn,
Morgantown, for February 3 & 4 at \$55/night (+tax) until
January 20 ONLY!**

Make your own reservations and identify yourself as being with the SAF
 Holiday Inn Morgantown: (304) 598-1680

See you there!

Valley Forge Chapter Hears of "Timber Plantations: World Woodbasket of the Future?"

By Terry Hoffman, Chair Valley Forge SAF Chapter



Speaker Bruce Arnold (l) discusses timber plantation potential with Duane Green

President **R. Bruce Arnold** of R.B. Arnold Associates, Inc., International Forest Industry Consultants, presented a thought-provoking topic to members at the fall meeting of the Valley Forge SAF Chapter. He explained that industrial plantations represent less than 2% of the forest and other wooded areas of the world. He then proposed that if we were to utilize the known technologies to raise fast growing trees, we could supply 50% of the world industrial wood need early in the 21st Century.

Comparing mean annual increment in cubic meters/hectare/year ($m^3/h/yr$) for various natural and plantation forests for both tropic and temperate region, he supported his statement that intensive plantation management of fast-growing species can accomplish this goal. The USA has led the world in the development of fast-growing softwood plantations with more than nine million hectares of planted forests with growth rates in the 12-15 $m^3/h/yr$. Government incentives in Brazil since 1966 have led to some of the most dramatic genetic improvements in the world. In Aracruz Brazil, the average growth rate of hybrid Eucalyptus has doubled through tree improvement programs in just two decades to 55-60 $m^3/h/yr$ — while substantially increasing average wood density at the same time. The best clones produce as much as 70-110 $m^3/h/yr$, with a crop rotation of seven years for pulpwood maturity.

Bruce spent 35 years with the Scott Paper Company, with the last eight years involved in leadership of multiple fast-growing tree projects. He has extensive experience in Chile, Portugal, The Republic of Ireland, Spain, France, West Africa, and Thailand. A member of the Valley Forge Chapter, he is available for programs on this topic to interested groups and can be contacted at (610) 964-9757.

During the business meeting, **R. Bruce Arnold** was elected to the Chair-Elect position and **Bob Girvin** to Secretary/Treasurer. **Terry Hoffman** will serve as Chapter Chair for the next two years. **Duane Green, Charlie Newlon and Lloyd Casey** volunteered to act as mentors for Penn State forestry students in the area, under the newly initiated Allegheny SAF Mentor Program. ▲

The SAF Summer Meeting... A Chance for Family Enjoyment

By R. Bruce Arnold, Chair-Elect, Valley Forge SAF

Plan now to bring the family along when you attend the Summer Meeting of the Allegheny SAF at Valley Forge, PA on August 17-18, 1998. Easy access from all points in the Allegheny SAF region via PA Turnpike Exit #23 and major north/south Interstate routes.

There are many opportunities for shopping at the famous King of Prussia Mall, and educational sight seeing at historic Valley Forge Park, and center city Philadelphia and Southeast Pennsylvania -- museums, the zoo, the Liberty Bell, and historic buildings connected with our country's Declaration of Independence and Constitution, John Bartram's house, Tinicum Island Wildlife refuge, early Swedish colonization, etc. So you see, not only does the meeting offer CFE credits for the professional in the family (Weeds, Wildlife Water and Development in the Rural/Urban Interface) but enjoyment and CE credits for other family members!

The Holiday Inn at King of Prussia has agreed to give reduced SAF meeting rates to attendees for the preceding weekend and a few days after the Monday and Tuesday meeting dates. The Valley Forge Chapter will have much more information and detail at the winter meeting in New Jersey, so visit us there and finalize your plans with the whole family. ▲

Effective Meeting Rules

Show Up on Time
Start and Finish on Time
Listen
Don't Repeat
Be Brief
Don't Interrupt
Stay Focused
No Side Conversations
No Cheap Shots

Pennsylvania State Forest Lands Receive Independent Environmental Certification*

About 1.2 million acres of Pennsylvania's 2.1 million acres of public forest land has been certified by the Scientific Certification Systems (SCS) of Oakland, California as being "well managed", indicating that the State Department of Conservation and Natural Resources (DCNR) is managing its State Forest Lands in an environmentally responsible manner. The remainder of the approximately one million acres of the state forest system is undergoing the evaluation process in 1998.

Pennsylvania is only the second state in the nation to undergo and pass a forest certification process by an independent third-party team of professional peers. Because of the number of acres receiving certification, the Commonwealth now has the largest certified forest land in the nation.

Governor Tom Ridge, DCNR Secretary John Oliver, and State Forester Jim Grace agree that, "This confirms what we have known all along - the Commonwealth values all uses of its public forests and manages Penn's Woods in a way that protects forest ecosystems, and insures the production of timber for current and future generations. We are extremely proud of achieving this 'seal of approval' ..."

Achieving forest certification status assures consumers that wood raw materials and products originating from Pennsylvania's public forest lands come from a sustainably-managed forest ecosystem.

SCS is one of five companies worldwide accredited by the Forest Stewardship Council (FSC) to offer forest landowners independent, third-party certification of sustainable forest management practices. The project team assembled by SCS, composed of a forester, wildlife biologist, and forest economist, scored the state forest lands on three major categories: timber resource sustainability; forest ecosystem maintenance; and financial and socioeconomic considerations. In order to receive certification, it was necessary to score 80 or greater on a scale of 1-100 in each category. Pennsylvania scored 84, 82, and 91 respectively. During the certification process, SCS reviewed documents in DCNR's district forest offices; conducted one-on-one interviews with people and groups who use the forests; and studied sample areas of the forests.

In its final report, the evaluation team commended the state for its "exceptionally strong" socioeconomic performance, "reflecting the Commonwealth's commitment to investing in the state's forests and providing public recreation opportunities." The report also cited the state's performance in timber stand level management, harvest efficiency and utilization, pest and pathogen management, and water course management as "exemplary." The team identified several areas of the state's forest management needing improvement which will be addressed in the next 15-year management plan currently under development.


The Heinz Endowments, based in Pittsburgh, provided the Gifford Pinchot Institute for Conservation -- a non-profit organization committed to forest conservation policy -- with a grant to finance Pennsylvania's certification process as a case study for the rest of the nation.

To date, forest certification has been almost exclusively on private forest land. Kane Hardwood, a forest-products firm based in Kane, McKean County, PA received its certification from SCS in 1994. Kane's parent company, Collins Pine of Portland, Oregon leads the forest products industry in certification of its lands.

The market for certified forest products is rapidly expanding. Certified forest products are being used by retailers and manufacturers including the Nature Company, Gibson Musical Instruments, and Colonial Crafts. A purchasing policy that prefers certified wood is being developed by the City of Los Angeles, and both Duke University and Dartmouth College are currently evaluating certified wood for application in institutional furnishings. It is hopeful that timber originating from certified State Forest Lands, supplied with an eco-label, may give Pennsylvania a competitive edge in the Global market. ▲

** Extracted from the Nov. 18, 1997 DCNR release. Gretchen Leslie, Press Secretary (717) 772-9101.*

**QUALITY
EVERGREENS & HARDWOODS**



PENNSYLVANIA GROWN TREE SEEDLINGS

Pine: Scotch, Austrian, Red, White, Ponderosa, Japanese Black, Mugho, Lodgepole, Virginia

Spruce: Blue, White, Norway, Black Hills, Eastern Larch

Fir: Balsam, Concolor, Fraser, Douglas, Canaan

Birch: European, Gray, Paper, River, Allegheny, Black

Oak: White, Pin Red, Black, Scarlet, Bur, Sawtooth

Maple: Silver, Norway, Sugar, Red

Locust: Black, Honey, Bristly

WRITE FOR OUR PRICE LIST • PO BOX 340

Musser Forests inc.	DEPT 85A	Indiana, PA 15701 412-465-5685
--------------------------------	---------------------	---

Arbor Day Proclamation 1923

In the name and by Authority of the Commonwealth of Pennsylvania Executive Department, Harrisburg.

I, Gifford Pinchot, governor of the State of Pennsylvania, do hereby designate and proclaim FRIDAY, APRIL 13th, 1923, and FRIDAY, APRIL 20th, 1923 as ARBOR DAYS and BIRD DAYS, to be appropriately observed throughout the Commonwealth by the planting of trees, the study of bird life and such other exercises as will develop a fuller appreciation and a better understanding of our birds, trees, and forests.

Arbor Day means Tree Day. It is not an ordinary day but a special day designated for the study of trees and forests. For more than 50 years this important day has been observed. Now more than ever before, it is urgently necessary to think about our trees and our forests in an earnest and practical way.

Pennsylvania was once the first state in forest production. Now she holds 20th place. Our forest heritage has been squandered and our mountain land is idle. Millions of waste acres are now awaiting forest restoration. In no other state is the duty to restore the forest to health, beauty, and production so clear and urgent. We cannot afford to turn away from this duty. We must not withhold our hands from the responsibility that is ours. The future of the State is not safe without the planting and protection of trees. We need the products of the forests everyday of our lives. The only way that we can be assured of a future wood supply is to grow it on our native hills.

Trees are close to the lives of every Pennsylvania boy and girl. They add to our wealth by day and by night. For ages they have been catching the sunlight and converting it into wood for man's use. No boy or girl can serve our State well who does not appreciate the service of trees and understand the relation of the forest to everyday life.

As we cannot have agriculture, pure water, equable climate, and health without forests, so we cannot have forests without birds. All varieties are useful in maintaining Nature's balance and destroying insect enemies. We need their cheery presence in our forests. They deserve our fullest protection by restraining the thoughtless gunner and by preserving their natural nesting places.

Trees, apart from their practical side, make far better manhood and womanhood by inspiring a higher and cleaner viewpoint of life. The spiritual value of their preservation and association is inestimable.

I am anxious that no school in the State shall let Arbor Day pass without the planting of a tree. I commend to every citizen of the State, especially the pupils and teachers of our schools, the planting of shade and ornamental trees near schools and dwellings, along highways and streams, and also the planting of young trees upon our mountain sides. And what we plant let us protect so that Pennsylvania, the only state in the union that embodies the word forest in her name, may again be Penn's Woods in fact as well as in name.

Given under my hand and the Great Seal of the State, at the city of Harrisburg this __ day of February, in the year of our Lord one thousand nine hundred and twenty-three, and of the commonwealth one hundred and forty-seventh.

(SEAL)

By the Governor: Gifford Pinchot

Federal Tax Changes will Affect Private Forest Owners

By Lloyd R. Casey, USDA, Forest Service Northeastern Area



The new Federal Income Tax Law that was recently signed by President Clinton will have major implications for the private forest owner. This is the first major change in the tax law since 1986 and some of the items lost at that time have been reinstated in modified form.

CHANGES IN CAPITAL GAINS

The most significant change is how capital gains are calculated. Capital gain is income from various activities that are derived from long term investments such as oil drilling, certain stocks and bonds and timber harvesting. From 1944 to 1986, tax payers were allowed to exclude 60% of capital gains income from tax liability. In 1986, this provision was discontinued and it caused many forest owners to harvest prematurely to avoid the higher tax.

About 1988 the law changed, making the top tax rate on capital gains 28%. Those high income folks paid no more than 28% on capital gains, while the ordinary income rate was as high as 39.5%. Capital gains income did not affect social security income as did ordinary income.

The new law reduces the capital gains rate from 28% to 20% for those tax payers in the 28% or higher brackets. For taxpayers in the 15% or lower brackets, the rate is reduced from 15% to 10%. If assets are held five years beyond December, 2000, the rate will be further reduced to 18% and 8% respectively.

The reduction of capital gains taxes will encourage more forest owners to manage their timber, as well as the other forest resources because:

1. The value lost from inflation will be made up by reduced taxes.
2. Increased net income will encourage owners to manage forests for income.
3. Owners will be less apt to sell portions of their land to pay tax bills and other upkeep costs because they will have income from the property.

History of Capital Gains Tax				
(Effects on \$1,000 of Income)				
Tax bill Year	Exclusion %	CG tax rate	Net Income	Rule
PRE '86	60% Exclusion \$400	28% Tax due \$112	\$888	Hold for 1 yr
1987 - 1997	No Exclusion \$1,000	28% Tax due \$280	\$720	Hold for 1 yr
New Law '97	No Exclusion \$1,000	20% Tax due \$200	\$800	Hold for 18 mo.
New Law '00 For assets Purchased after 2000	No Exclusion \$1,000	18% Tax due \$180	\$820	Hold for 5 years

CHANGES IN ESTATE TAXES

Federal Estate Taxes have been the source of much controversy over the years. The main complaint stems from the fact that the rate of tax on estate ranges from 35% to 55% of the value of the estate above \$600,000, to be paid by the beneficiaries.

Land that had been purchased many years ago whose value increased significantly due to inflation was worth far more than heirs expected. When faced with such a large bill, the only recourse was to sell. In order to satisfy the IRS, a quick sale was necessary and in most cases a low price was received and the land was lost to the heirs.

The new law increases the \$600,000 exclusion in steps to \$1 million by 2006. After 2006, the exclusion is indexed to a cost of living. This will allow more estate forest lands to be passed on in tact.

People are able to give away \$10,000 annually without tax liability on the part of the donor or the recipient. This will now be indexed for inflation to the next lowest 1,000. This provision enables value of estates

to be reduced over the years and thus reduce estate taxes.

The new law allows for installment payments of the estate tax over 20 years rather than the current 10 years. In addition, the interest rate on the unpaid tax due has dropped from 4% to 2%.

An executor of an estate will be allowed to exclude up to 40% of the value of the land in a qualified conservation easement. In order to qualify, the land must be located within a 25 mile radius of a metropolitan area, national park or wilderness area of within 10 miles of an urban national forest. Estates taking advantage of the family-owned business exclusion cannot double count this benefit.

The new law is a good step forward to ensure that taxes are less of a burden on long term investments; that inflation has less influence on the taxed value; and that conservation easements are fully utilized to keep working forests and farms intact despite the increased development.

This is just a brief summary, hitting the highlights. For a complete understanding of the new provision, contact your tax preparer. ▲

Arbor Day Alert!

National Arbor Day is April 29, the last Friday in April; the same in the Allegheny SAF states of PA, NJ, & DE - my source puts it at the first Wednesday in April for MD and the second Friday in April in WV. But you know when its celebrated in your state, if I happen to be wrong.

What can you do about it? If you haven't already, get involved in an Arbor Day activity as another way to work proactively in your community as a SAF member. Get in contact with school teachers, garden clubs, local park departments, historical societies, etc., and initiate or cooperate in implementing an activity that puts you, forestry, and the SAF in a position as a broker of factual environmental information to co-workers, the community, the press. An automatic opportunity that comes every year -- take advantage!

Get in touch with SAF Communications Manager, **Jennifer Plyler (301) 897-8720** or plyler@safenet.org for a kit to help you get involved. It includes: a list of suggested projects; an outline for an Arbor Day Ceremony; a suggested news release and public service announcement; the History of Arbor Day; and contact addresses for the National Arbor Day Foundation. ▲

USFS & SAF Partner on Forest Fragmentation

USFS Northeastern Area State & Private (12/10/97)

The U.S. Forest Service, Northeastern Area, State and Private Forestry (S&PF) and the national office of the Society of American Foresters (SAF) signed a Memorandum of Understanding forming a partnership to support common objectives related to the wise use of healthy, productive and viable forests.

As a first step, the partnership will examine forest fragmentation and land parcelization as important issues facing forest management in the Northeast and Mid-Atlantic states. They will examine and seek to clarify the issues involved and engage partners in the forestry community to develop a framework for addressing their potential ecological and economic consequences.

S&PF and SAF will host three separate roundtables to bring together scientists and other experts to review current research and reach consensus on what is known, what is not known and what needs to be known.

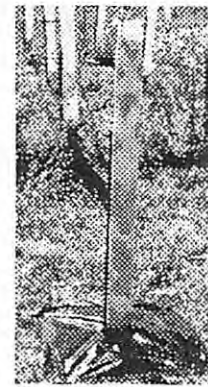
The roundtable dates and themes are: January 12 - Forest Ecology Impacts (forest health, function, and habitat); January 14 - Forest Economic Impacts (forest products, recreation, and real estate values); and January 16 - Forest Policy/Law Realities and Needs. The roundtables will produce issue papers offering research abstracts and summarizing the discussions and areas of consensus.

For more information contact Rick Cooksey at (410) 267-5706. ▲



Your SAF National Council at the 1997 Convention in Memphis, Tennessee

Maximize Tree Health & Protection 2 Ways



1. **TREE PRO** Tree Protectors Stop Die-back and Protect Trees from:

- Deer Brouse and Rub
- Rabbits and Rodents
- Wind and Drought
- Mowers
- Chemical Sprays

2. **MycorTree** Mycorrhizal Root Dip Enhances Growth and Improves:

- Stem and Root Growth
- Survival Rate
- Disease Resistance
- Drought Tolerance

For more information & sample call:

TREE PRO at 800-875-8071

3180 W. 250 N. W. Lafayette, IN 47906

www.nlci.com/treepro

Coming Events

January 1998

28-30 NY SAF Winter Meeting, Sheraton Four Points Hotel, Liverpool, NY (Syracuse), Dinnie Sloman (914) 586-3054.

February

11-13 Allegheny SAF Winter Meeting, "Ride the Wave... The Changing Tides of Forestry." Tropicana Hotel & Casino, Atlantic City, NJ. Learn the trends for technology, utilization, legislation and resources. Contact John Benton (908) 928-0029.

March

11 Ninth Environmental Issues Conference, "Promoting Stewardship Through Innovation," Shippensburg University, Shippensburg, PA. Intended audience: students, environmental professionals, and interested citizens. DCNR, Kings Gap E.E. Center (717) 486-3799.

15 **Deadline for articles and photos for Spring 1998 issue of *The Allegheny News*.**

April

5-7 "Natural Resources Income Opportunities on Private Lands Conference", Ramada Inn Convention Center, Hagerstown, MD. General and concurrent sessions in published proceedings. U of MD Cooperative Extension Service (301) 791-1304, FAX (301) 791-1048 (*13 SAF CF Continuing Education Credits*).

May

6-16 Study Tour to Norway & Sweden. Contact Dick Reid at (941) 488-2467 or e-mail: rreid6651@aol.com

June

15 **Deadline for articles and photos for Summer 1998 issue of *The Allegheny News*.**

August

17-18 Allegheny SAF Summer Meeting, Holiday Inn, King of Prussia, PA "Forestry on the Edge: The Urban/Rural Interface." Topics include Water, Weeds, Wildlife, Land Use" sponsored by Valley Forge Chapter... mark your calendar

September

15 **Deadline for articles and photos for Fall 1998 issue of *The Allegheny News*.**

19-23 National SAF Convention, Traverse City, Michigan

Future National SAF Conventions

September 11-15, 1999 Portland, Oregon
November 16-21, 2000 Washington, DC

A Letter of Response

I was pleased to read Robert H. Rumpf's response to the article, "Professional Forester Credibility and NIPFs: Towards a Better Dialogue" by Luloff et. al. in the Summer 1997 issue of *The Allegheny News* (pp. 14-17). The most radical sentences in the Luloff article, in my opinion, and ones which sent chills up my spine, were:

"Given current forest land ownership and stewardship strategies, there are far too many small parcels to implement any singular forestry management plan. Further, extant property rights issues make ecosystem management difficult, since regional forest health concerns, by necessity, cross multiple landholdings. Political and property boundaries rarely correspond with ecological boundaries. *In our opinion, there is too much at risk to wait for voluntary ecosystem management to occur.*" (My italics!)

Unfortunately, even some academicians do not recognize the inefficiencies of centralized control and the threats to our freedoms and prosperity.

Harry V. Wiant, Jr.
Morgantown, West Virginia

Allegheny SAF New Officers

Chair

Mark R. Webb
11021 US Route 6
Union City, PA 16438
(o) 814-663-5393
(f) 814-663-5393

Chair-Elect

Michael B. Lester
RR1 Box 268
Springville, PA 18844
(o) 717-833-3194
(h) 717-965-2752
(f) 717-833-6180
mclester7@aol.com

Secretary/Treasurer

Susan E. Lacy
1713 Kings Highway
Coatesville, PA 19320
(o) 610-975-4134
(h) 610-383-7144
(f) 610-975-4200

Past Chair

Timothy A. Kaden
724 Green Winged Trail
Camden, DE 19934
(o) 302-739-3423
(h) 302-697-7066
(f) 302-739-3817
tkaden@state.de.us

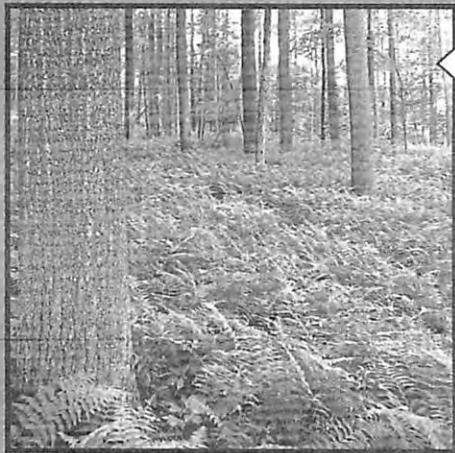
Executive Committee

Kurt W. Gottschalk
USFS Science Lab
180 Canfield Street
Morgantown, WV 26505
(o) 304-285-1598
(h) 412-627-4161
(f) 304-285-1505

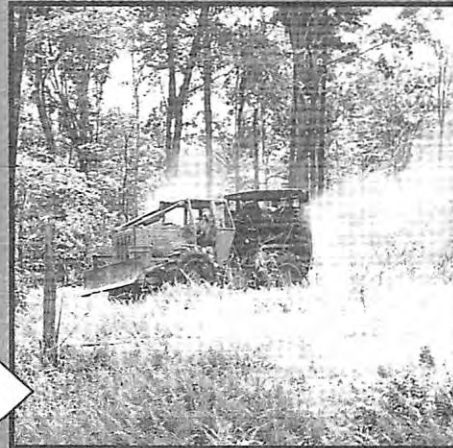
Kenneth W. Jolly
1398 Primrose Road
Annapolis, MD 21403
(o) 301-464-3065
(h) 410-626-2845
(f) 301-464-0462

Kenneth C. Kane
103 Tionesta Avenue
Kane, PA 16735
(o) 717-775-9741
(h) 717-775-9741

Susan Stout
19 Park Street
North Warren, PA
(o) 814-563-1040
(h) 814-726-2023
(f) 814-563-1048



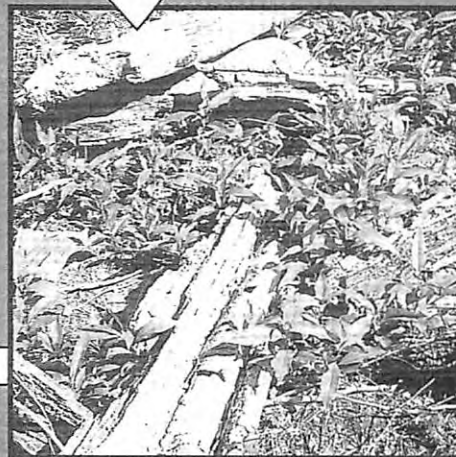
A PROBLEM
(no tree regeneration)



A SOLUTION
(herbicide spraying)



A BEGINNING TO...
(controlling understory and
establishing tree regeneration)



**SUSTAINABLE
FORESTRY**

BARRY S. ROSE
Consulting Forester



Licensed & Insured Pesticide Applicator
P.O. Box 319, Lawn, PA 17041-0319
Phone/Fax: (717) 964-2264 evenings