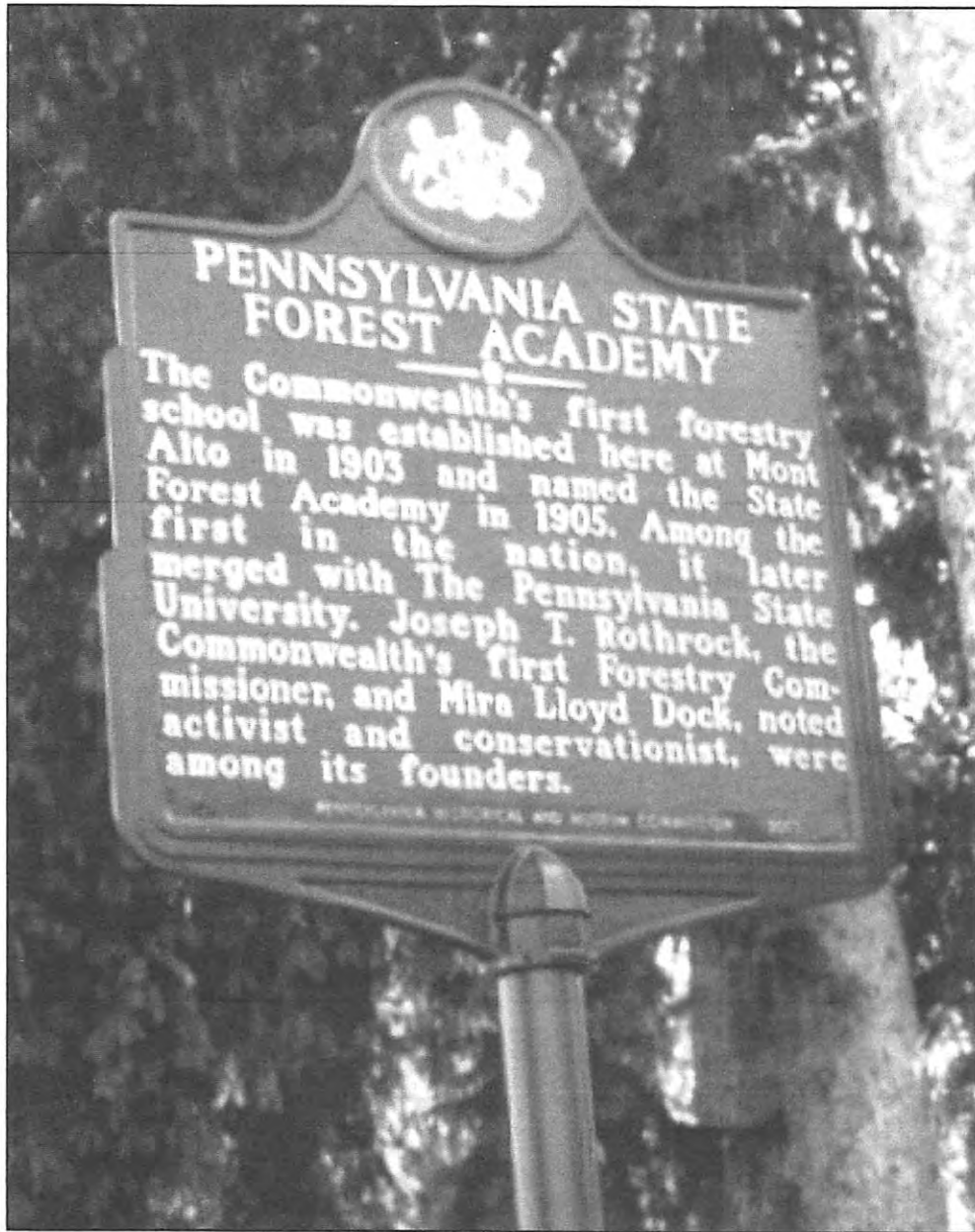


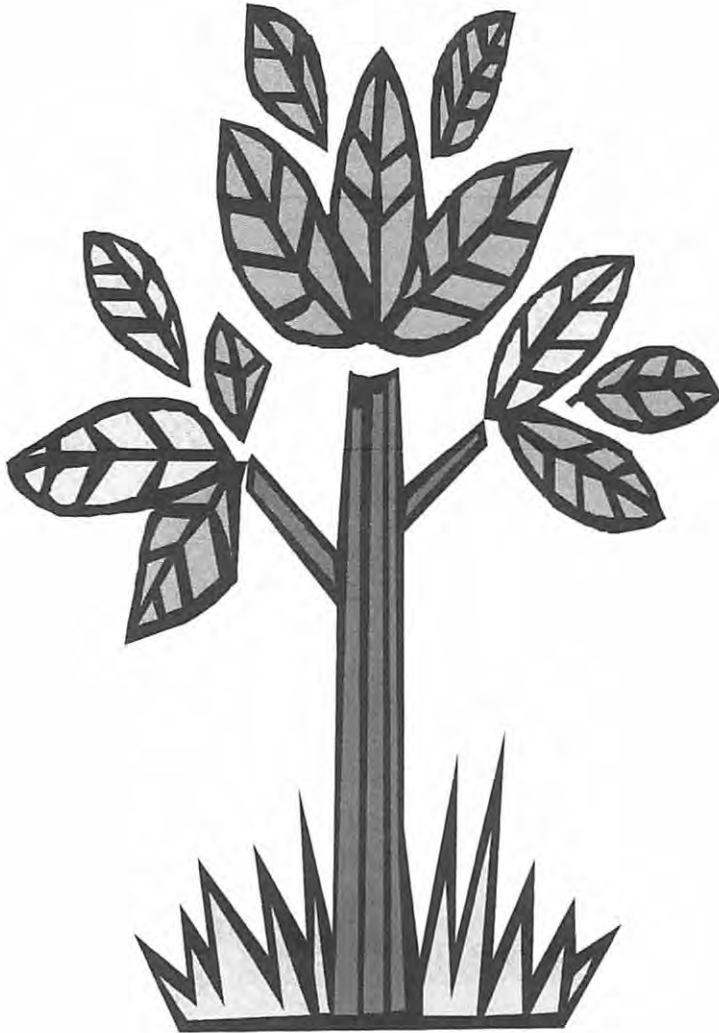
# The Allegheny News



Allegheny Society of American Foresters  
**Summer 2003**

# Allegheny Society of American Foresters Educational Endowment Fund Update

Goal \$40,000



June 2003  
\$17,695  
and Growing!



Send your tax-deductible contribution to:  
Ron Sheay  
12 Glenwood Lane  
Stockton, NJ 08559

# The Allegheny News

Volume 12, No.2

The Allegheny News is the official publication of the Allegheny Society of American Foresters. Published four times annually. Deadline for articles is December 15, March 15, June 15 and September 15. Subscription rate included in the annual Allegheny Society dues.

The mission of the SAF is to advance the science, technology, education, and practice of professional forestry in America and to use the knowledge and skills of the profession to benefit society.

P.O. Box 699 • Dillsburg, PA 17019-0699

Editor: Jack Winieski

Layout: Catherine Winieski Carter

## Table of Contents

Chairman's Corner .....	1-2
Radspinner Honored for Technical Writing .....	2
Joint Forest Sustainability Seminar .....	2
2003 MFA Loggers/Forestry Field Days .....	3
In Memoriam .....	3
Ben Roach Forum Photo Highlights .....	4
Penn State SAF Students & PLT .....	4
Councilman's Corner .....	5
PSU Woodsmen's Team Returns .....	6
Summer 2003 for WVU Students .....	6
SAF Student Chapter Inventories the Gap .....	7
Allegheny SAF Winter Meeting Minutes .....	8-10
Allegheny SAF 2002 Treasurer's Report .....	12-13
Valley Forge SAF Spring Meeting .....	14
Historical Marker Dedicated at Mont Alto .....	14
ANSAF Educational Endowment Fund .....	15
"Reggie" Forbes Connections .....	16
A Vote for Tim Kaden .....	17
Campaign Statement — John Helms .....	18
Campaign Statement — Tim Kaden .....	19
A Liability Trend in the Forest Industry .....	20
Risk & Liability Symposium Registration .....	21
Elections .....	22
Joint Meeting Proves Valuable for Many .....	22
Forestry Journal Focuses on Remote Sensing .....	23
Current Status of PA Forest Inventory .....	24-25
WV SAF Division Summer Meeting Agenda .....	26
WV SAF Division Meeting Registration .....	27
Coming Events .....	28
Allegheny SAF Committee Chairs .....	28
Allegheny SAF Chairs, Executive Committee and Division Chairs .....	Inside Back Cover

### Cover Photo

An Historical Marker now graces the entrance at the Penn State Mont Alto campus. See article on page 14.



## Chairman's Corner

By Ken Kane  
Allegheny SAF Chair

Before I get on my soapbox about any number of issues, let me address three very important events going on right now in the Allegheny SAF.

First... Ron Sheay is keeping up the momentum in the Educational Endowment Fund drive (see the progress report in his article on page 15). If you haven't responded to a request to get involved, please send in your contribution to the growth and long-term stability of ANSAF.

Second... VOTING! We in the Allegheny SAF are facing an enormous responsibility in the very near future. There will be a ballot in the fall issue of *The Allegheny News* for the election of a Chair (to fill the vacancy left by the untimely death of Bob Bauer), a Vice Chair, and a Secretary/Treasurer. The winners of these elections will fill our top positions of leadership for the next four years. Please take the time to vote and mail in your completed ballot on time - it's a responsibility we all should take more seriously. We grow national leaders right here in our region.

Third... Our own Tim Kaden is running in the national election for Vice President of SAF. Read his campaign statement in this issue (page 19). I think you'll agree that he is qualified and deserves this National SAF leadership position.

In the Spring 2003 issue of *The Allegheny News* I shared my experience at the Forest Service National Diversity Conference held in February. It was at that conference I realized how some groups and individuals are accomplishing the goal of zero harvest from public land not only by utilizing the court system by appealing projects on public land, but also continuing the planning process through dialogue. It could be labeled a special interest filibuster.

In early May I had the opportunity to present a "Green Tag Forestry" certification report for a project on the Allegheny National Forest. Keith Horn, Inc. was retained to conduct the audit and I was assigned

(Continued on page 2)

*(Continued from page 1)*

the project. I learned a lot through the process.

I have been involved in third party certifications with three different certifiers; they are not extremely different. All three seek a sustainable long-term objective. The criteria to meet sustainability are similar as well.

The public does care about the issues in forestry. Most people just do not have the time to become involved in the process. We must admit ours is a complicated profession. Foresters admit that we do not know or understand everything. How can we expect the public to know enough to make informed natural resource decisions? This challenge is even greater in our fast paced electronic world when forests continue to change at a forests pace not societies.

So what do we do as Foresters? We must overcome the obstacles, real or assumed, that prevent sustainability. As foresters, who have devoted our careers to sustaining the forest resource values, we must together continue to seek the resolution of contentious issues. Regardless of our field of interest or the type of business or institution we work for, we must put small issues aside and address what is right for the sustainability of the resource. I believe if we do this we will continue to meet the needs and most wants of the public. Engaging the public in a civil and professional manner is the best way to earn its trust, enable us to continue to sustainably manage "their" forest resource values.

The New Jersey Division is taking the message to the public with a Foresters Fund grant application titled "Get the Word Out on Forestry in New Jersey." They plan an outreach to 566 municipalities. We can all do our part in getting the word out by recruiting a new member and speaking to the strengths of our profession to everyone we encounter.

Hope to see you all at the summer meeting! ❄

## Radspinner Honored for Technical Writing

The Forest Resources Association (FRA) honored Bob Radspinner, of Plum Creek Timber Company, at its 2003 Annual Awards Dinner at Lake Tahoe, Nevada. The award recognized the Association's best technical release in

2002. Bob's prize-winning publication, entitled, "Spill Kits Can Prevent Costly Cleanups," describes the use of spill kits to stop leaks and clean up minor spills of fuel and fluids typically used in harvesting operations.

FRA Chairman Allen Bedell

congratulated Bob

and presented him with a plaque and a thank you from the Association membership. Breg International, a supply company that supplies spill kits and other environmental protection products, added its congratulations with a cash award.

Bob, a long-time member of SAF, graduated with a BS in Forestry from Virginia Tech. in 1977 and worked with Georgia-Pacific for 24 years until the Timber Company merged with Plum Creek. For the past two years he has worked with the Environmental/Science Group, primarily in the Appalachian region. He serves on the board of directors of both the Virginia and the West Virginia Forestry Associations.

Single copies of his winning publication are available at no charge from FRA at (301) 838-9385. Any requests should refer to stock # 01-R-13. ❄



Bob Radspinner (left) receives an award for his publication from FRA Chairman Allen Bedell

## Joint Forest Sustainability Seminar

A one-day seminar on Forest Sustainability will be held on Tuesday, August 5, 2003 in Trenton, New Jersey. The program is jointly hosted by Rutgers University, the New Jersey Chapter of SAF and the New Jersey Forestry Association, and will be keyed by Bill Banzhaf. It will also feature a segment by Tim Kaden on the use of conservation easements to help attain sustainability. Program cost is \$40 per attendee, \$25 per attending significant other. SAF continuing credits will be available. A dinner and legislative reception at the Trenton Club will be held following the seminar. Contact Tom Bullock at [TFBLaw@aol.com](mailto:TFBLaw@aol.com) for more information. ❄



# 2003 MFA Loggers/Forestry Field Days and Equipment Show Draws Crowds

By Karin E. Miller, MFA Executive Director

Even the rain (and mud) couldn't keep them away! The 2003 Western Maryland Loggers/Forestry Field Days and Equipment Show was held June 13 & 14 at the Garrett County Fairgrounds in McHenry, MD. With commercial exhibitors including representatives of many major dealers of logging and trucking equipment, insurance and lending/leasing companies and other businesses related to the forest products industry, another great show was enjoyed by all.

Back by popular demand was the Mid-Atlantic Region's only Skidder Pull Competition. A real crowd pleaser, professional skidder operators competed in three different classes to pull a weighted sled. A Professional Lumberjack Competition coordinated by former world champion Harry Burnsworth of Mill Run, PA was also held on Saturday



and featured champion level lumberjacks from up and down the East Coast in events similar to those seen on ESPN. Nearly \$7,000 in prizes was awarded during these two events. The Prentice Log Loader Checker Board Competition, sponsored by Pioneer Machinery, also occurred throughout the two-day event.

Sponsored by the Maryland Forests Association (MFA), the biennial event, is much more than an equipment show. The Loggers/Forestry Field Days, the only one of their kind in the Maryland, featured educational displays, programs and demonstrations on many different aspects of forestry and the forest products industry, plus included old-fashioned craft exhibits in addition to the logger and lumberjack competitions. The family event continues to welcome young and old alike to enjoy presentations such as *Birds of Prey, Scales and Tales, Snakes Alive!*, Allegheny College Woodsmen's



Team, Chainsaw Carver Shelly Upole and appearances by *Smokey Bear*.

Other special events included a 5-K Fun Run, the MD Sediment and Erosion Control (Green Card) training, and MD/DE Master Logger Core Training in Logging Safety.

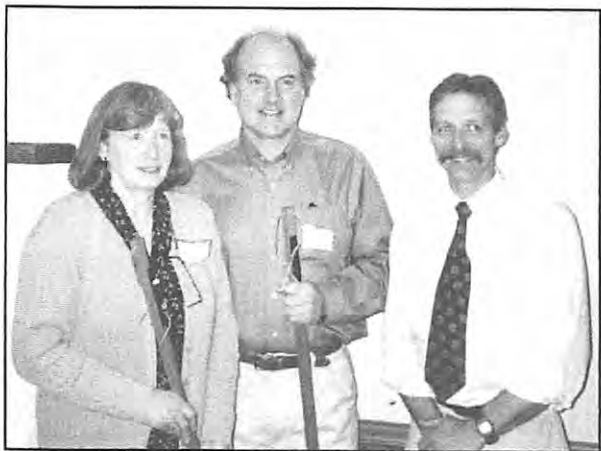
Celebrating more than 25 years of service to the Maryland forest community, the Maryland Forests Association is a nonprofit citizen's organization promoting the maintenance of a healthy and productive forest land base, and serving as an advocate for forest landowners, foresters, and those in the forest products industry. Further details about the event are on the MFA website at <http://mdforests.org/fieldays.htm>

## In Memoriam

George M. German, 89, of Wellsboro PA, and a 64-year member of SAF, died May 2, 2003. He was a District Forester with the Pennsylvania Bureau of Forestry, Department of Forests and Waters in Blain 1939-55, and in Wellsboro, 1955-75. He received a BS in Forestry from Penn State University. George was also a member of the Wellsboro OSSEA Mason Lodge and the Rotary Club. A graduate of the Carson Long Institute, New Bloomfield, he was an ex-officio trustee of that institution. He served as the first president of both the Lions Club, and Fire and Ambulance Association of Blain, PA. During World War II he served as a captain in the US Army Infantry.

Conrad R. (Connie) Lickel, 82, of Middle Paxton Township PA, an Associate Member of SAF, died June 10, 2003. He began his career with the Pennsylvania Department of Forests and Waters, Bureau of State after earning a MS degree in Landscape Horticulture from Penn State University. Known as "Connie" to all, he was Director of State Parks from 1964-73, when he was appointed Special Assistant for Resources Management, overseeing both parks and forestry operations. A Purple Heart recipient, he was a disabled US Army veteran of World War II.

## Ben Roach Forum Photo Highlights



Connie Bauer (above left photo, far left) was presented with a Black Cherry "Biltmore Stick" in honor of her husband Bob's leadership in The Ben Roach Forum over these many years. Ned Karger (far right) also presented Forum Speaker Will McWilliams (center) with the traditional "Biltmore Stick" at April's Ben Roach Forum. Some of the members and guests at the Forum (above right photo).

## Penn State SAF Students & PLT

By Michael J. Hancharick

Gifford Pinchot once said, "A good forester is a good citizen." What better way to be good citizens than to help educate K-12 children about how important forestry is to all of us? Eighteen members of the Penn State SAF Student Chapter have taken this idea to heart. This spring, they completed the Project Learning Tree (PLT) environmental education facilitator certification course to prepare themselves to be, "good foresters and good citizens." With this hands-on training under their belts, these new forestry graduates are better prepared to go share the foresters' part in insuring a healthy and sustainable environment with many publics - wherever their endeavors may take them.

With the harsh criticism that the forest community is facing, it is essential to prepare our next generation of citizens to evaluate every day issues related to the management and use of forest resources and their values. Biodiversity, wildlife habitat, watershed stewardship, recreation, and a sustainable flow of timber are all issue topics that foresters are



Mike Hancharick (far right) teaches Mrs. Gensler's students about forest history

involved in when they conduct management activities. Through education we can help all members of the environmental community to better understand the complexities in issue resolution.

Recently I used my training by presenting an illustrated lesson on the forest history of Pennsylvania to Mrs. Gensler's fourth grade, Dillsburg (PA) Elementary class. The students were excited to hear about what the forests that they live and play in once looked like. In this lesson the key changes that the forests have undergone and what foresters are doing today to maintain

ecosystem health were stressed. As with most elementary students, hands were flying with questions and comments.

After the lesson was over, each child recited something they found interesting. The one that stood out the most was when one little girl said, "I learned that cutting down trees isn't a bad thing and forestry is good for the forest." Hearing this would put a smile on any foresters face and we can only hope that with an increase in educational efforts, our profession will be better understood and viewed as a necessary and honorable activity. 🌲

## Councilman's Corner

By Mike Lester, SAF District VII Representative

The June Council meeting produced several results that will be important for members of the Allegheny SAF. I will talk about the other issues in the next Allegheny News, but perhaps the outcome that will have the most significant impact on the future of SAF is the decision to reinstate the SAF Leadership Academy for 2004. As you know, the 2003 Leadership Academy was canceled. We'll discuss the reasons for the cancellation later.

Why is the Leadership Academy so important? It is one of the most sophisticated tools that I have seen anywhere to prepare current and future leaders to be effective in leadership roles. And although there is a module in the training that deals specifically with elements of how SAF is organized, the majority of the training is geared toward leadership principles and tools that will be applicable throughout your career. Effective leadership will provide the motivation, vision, and direction that both SAF and the forestry profession will need if they are to survive and prosper.

How good was the training? I was fortunate in my career to have worked for a multinational company famed for their leadership training. The training I received at the Leadership Academy was easily the equal of the training that I received at that company. Bottom line, the Leadership Academy is the finest professional experience of my career.

At this point, approximately 380 leaders have been trained at the Leadership Academy. The original concept was to train Council members, Chairs, and Chair-elects of the State Societies and Divisions. Chairs of the Working Groups were quickly added to the mix. This training would give new leaders a handle on being more effective in their roles, and it would also serve to foster better teamwork at the House of Society Delegates meeting at the Annual Convention. Also, in the first few years, SAF completely funded the Academy out of reserves, hoping to build enough momentum for the Academy to be self-sustaining after the subsidy ended.

However, with some State Societies using one year terms and others using two year terms, the Academy got out of synch fairly quickly. When I attended in 1997, it was as Allegheny Forest Science Coordinator. There were times that the Allegheny didn't send anybody. That model was repeated elsewhere, and attendance started to drop, finally reaching a low of around thirty students last year. At that level, Council decided not to fund the Academy this year.

However, everyone on Council knew that the Academy was a great innovation and important to the future of SAF. If the Academy was to be successful, some of the basic assumptions had to be re-examined. One assumption that needed to be re-examined was that the concept of who was a leader. It became clear that this concept was too narrowly defined. Our leaders are not just those who happen to be the current Chair or Chair-elect. They are our Chapter chairs, Executive Committee, and also those that you can always count on to lead any new effort. They are also our younger members who show promise, but need to acquire leadership skills. You don't have to think about it for very long, before a lot of names in the Allegheny come to mind.

The key to a successful Leadership Academy is attendance. I want to challenge the Allegheny to find these leaders. At a minimum, every Division and the Allegheny should each send at least one member to the Academy. There will be a very limited amount of scholarship money available, so we are going to have to do our best to convince our employers to help. It's an investment that will pay them back many times over. Where at all possible, the Divisions and ASAF should help defray the costs where attendees can't get total support from their employers.

The time to plan is now. The 2004 SAF Leadership Academy will be held at the Lieds Arbor Day Center in Nebraska City, Nebraska from May 22-May 25. It's a great location and a great program. I look forward to seeing at least five members of ASAF there. If you're interested, please contact your Division Chair or me. If your Division has already committed to sending someone and you want to attend, your application will still be considered.

On another note, by now most of you have heard that Michael Goergen has been named to replace Bill Banzhaf as the Executive Vice President of SAF. Michael will have some big shoes to fill. However, as those of you who know Michael have already noted, we are all breathing a sigh of relief that the hiring process yielded such an excellent individual. Hats off to Immediate Past President Dave Smith, who led the search team. Michael, welcome to your new role.

Carpe Diem. ✨



# Penn State Woodsmen's Team Returns To Campus



After an extended absence from woodsmen competitions, the Penn State Woodsmen Team (University Park Campus), returned to action this year at the 57<sup>th</sup> Annual Spring Woodsmen Meet at Colby College in Waterville, Maine April 18-19, 2003. While the team experienced many obstacles along the way, and only two weeks of practice under their belts, the team comprised of Brent McNeal, Zack McNeal, Roy Bucher, Bill Mentucky, Nathan Burgess, Matt Fromm, Brock Sanner and Coach Mike Powell, gained a respectable 11<sup>th</sup> place finish out of 14 teams. In addition, the team came home with a 1<sup>st</sup> place finish in the pack-board relay event, an event that was practiced the night before

in the hotel parking lot!

Along the road to establishment, the team experienced many setbacks. The entire fall and winter was spent cutting firewood to raise money for new equipment and to cover travel costs. As a result, there was little time for practice, and while it was somewhat evident in some of the events, the team knew what they went through to get to the meet and they gave it a 110% effort. Thanks to the hard work of all the team members along the way, tremendous support from the Penn State Forestland Management Office, faculty and staff of the School of Forest Resources, and the Penn State Mont Alto Woodsmen Team, the University Park Woodsmen Team is

here to stay. The University Park Team would like to thank everyone who made the trip to Maine possible, and look forward to continued partnerships in the future.

Next year is looking even more promising for the team, with several meets already scheduled in the fall, as well as a demonstration planned for the homecoming football weekend. However there is still a tremendous amount of work to be done. The team is still in need of more equipment that could not be purchased last year, and hopes are to look to alumni and businesses for support, as well as continuing to raise funds through firewood cutting. One thing is for sure though, amid the grounds of the University Park Campus, if you listen, you'll hear the buzz of the saw, the chop of the ax and the roar of the Lion Lumberjacks! If you have any questions concerning the activities of the Penn State University Park Woodsmen Team, or would like to support the team, please contact the team's advisor, Mike Powell at (814) 863-1113 or e-mail [mjp175@psu.edu](mailto:mjp175@psu.edu) ✪

## Summer 2003 for WVU Students

By Joseph D. Rossetti, Chair, Allegheny SAF Student Chapter

Summers are very important to students. This summer will provide the forestry students of the WVU Chapter of the Society of American Foresters with many opportunities. We can take extra classes to get ahead or catch up, get jobs for practical experience, and help us make decisions about what branch of forestry we want to pursue. Of the most immediate importance, however, we will make money to pay rent next year!

Jessica Evans will be working as a procurement forester for W.M.

Cramer Lumber Company in Marlinton, WV. Heather Frederick will be doing fieldwork for her Masters of Biology thesis on the relationship between nutrients and productivity in southern forests on flood plains. Kyle Hoyd will be climbing and pruning trees in the D.C. and Philadelphia area for a private arborist company. Matthew Hurd and Matthew Perkowski will attend summer camp, an intensive and mandatory five-week summer course. Following camp, Perkowski will take classes towards his Forest

Management major and Geography minor, and work for the WVU Division of Forestry. Our youngest member, Kristin Lockerman, will return home to her life-guarding position and then take classes during the second summer session at WVU towards her double major in Forest Management and Agricultural and Environmental Education. Joseph Rossetti will be working for the USFS Forest Inventory and Analysis Unit in Manistique, MI. We wish our students and all SAF student members a productive, educational, fun, and safe summer. Return to WVU refreshed, more experienced and ready for the next semester! ✪



## SAF Student Chapter Members Inventory the Gap



Crew members practice point sampling

Four two man crews comprised of Penn State University Park and Pennsylvania College of Technology SAF Student Chapter members have begun the Fort Indiantown Gap National Guard Training Center Forest Inventory. Crewmembers will spend the summer traversing approximately 10,000 acres of ridge and valley forestland while collecting data on over 2300 inventory plots.

Each crew will be using rugged field computers running a Penn State Forestland Management Office one-of-a-kind software package (PenFoRMS) integrating GPS, GIS and field data collection. The technology will assist




Measuring an oak's DBH


the crews in locating the inventory plots accurately and efficiently. Once at the inventory plot the same technology will allow the crews to digitally collect inventory data ranging from seedlings per acre to percentage of concealment present.

The data will be used to assist the Environmental Division of The Department of Military and Veteran Affairs in future

resource management at the Gap. For questions relating to the project or about PenFoRMS, contact the Forestland Management Office by phone at 814-865-6272 or by e-mail at [psuforestmgmt@psu.edu](mailto:psuforestmgmt@psu.edu)




BETTER FOREST TREE SEEDS



**EDGAR H. PALPANT**  
Consulting Forester

"If a better system is thine, impart it;  
if not, make use of mine." Horace (65-8BC)

Operations:  
Pal Lane  
Mc Alevys Fort, PA



Mailing:  
R.D. #1, Box 709  
Petersburg, PA 16669  
Phone: 814-667-5088  
Fax: 814-667-5089

BETTER TREES - THROUGH BETTER SEED - THROUGH RESEARCH  
Specializing in Christmas Tree Management

## Introducing

### **TREE PRO's Miracle Tube**

A seamless Tree Shelter



- Flared top.
- No assembly required.
- UV stabilized two ways.
- 100% recycled materials.
- Manufactured in the USA.
- Reusable ties are available.

Call us when you need  
Weed mats, mycorrhizal and  
controlled release fertilizer.

**TREE PRO's original  
design is still available.**

For a free sample  
**800-875-8071**

3180 W. 250 N. West Lafayette, IN 47905  
[treepro.com](http://treepro.com)

# Allegheny Society of American Foresters Executive Committee Meeting Minutes February 19, 2003

## Attendees:

**Allegheny Officers:** M. Lester, Past-Chair/Council Representative; K. Jolly, Sec/Treasurer; H. Wurzbacher, K. Sykes, F. Hennion, and J. Perdue, Exec. Comm. Members; J. Winieski, Exec. Director  
**Division/Chapter Officers & Committee Representatives:** N. Karger, PA Div. Chr.; D. Miller, PA Div. Chr-Elect; M. Hale, N. Hwd. Chp. Chr.; J. Albright, N. Hwd. Chp. Chr-Elect; S. Cary, Rothrock Chp. Chr.; C. Stelter, Plateau Chp. Sec/Treas.; M. Webb, Plateau Chp.; D. Cary, Pinchot Chp. Chr.; G. Pierson, NJ Div.; R. Sheay, Alleg. Endowment Fund Chr.; A. Day, Alleg. Endow. Fund Comm.; C. Ostheim, W. Gateway Chp. Chr.; B. LaBar, Pinchot Chp. Chr.; C. Newlon, Communications Comm. Chr.

## Meeting Opening:

Mike Lester opened the meeting with a moment of silence in memory of Bob Bauer. Following this, Mike advised that Chair Ken Kane was unable to be present at the Executive Committee meeting, as he was attending another meeting in Washington, DC, but would arrive at the Winter Meeting on Friday.

## Allegheny Education Endowment Fund-Raising Committee:

Ron Sheay reported there has been good progress to date: 49 responses from the first round of contacts (Endowment Fund-Raising Comm., Alleg. Exec. Comm., SAF Sustaining Members, Fellows, Allegheny Award recipients, etc.); the amount donated to the fund-raising campaign so far is just under \$10,000. The next step in the campaign will be to begin contacting the full membership of the Allegheny.

## Education Endowment Fund Charter:

Mark Webb distributed a draft of proposed revisions to this charter (previously titled the "Continuing Education Fund"). Mark noted that the revisions did not preclude previous expenditures from the fund, but did add items the fund could support – the most important being financial support of the Allegheny News, which is considered to be one of the most significant educational venues for reaching the entire Allegheny membership. Following discussion, the Exec. Comm. unanimously approved the revised charter. The Exec. Comm. also voted to have the Allegheny Chair move forward in the near future to appoint the Education Committee Chair/Committee Members (5 total), as per the Education Committee by-laws (Article 8, Section F).

## Chair-Elect Succession:

Due to Bob Bauer's tragic death, the Exec. Comm. reviewed the by-laws in regards to filling the Chair-Elect position, as follows: "In the event the Vice Chairman is unable to complete the term of office and succeed to the office of Chairman, the Executive Committee shall appoint an acting Vice Chairman to serve until the next election at which time both a Chairman and Vice Chairman shall be elected." (Article 5, final paragraph). Mike Lester solicited interest from those attending to serve as Acting Vice Chair, and stated that a follow-up Exec. Comm. meeting would be held at the conclusion of the Winter Meeting to appoint the position. At this follow-up meeting, held on Feb. 21, 2003, the Exec. Comm. asked Howard Wurzbacher to serve in this capacity, and Howard agreed to accept the appointment to serve as Vice-Chair for the remainder of the term.

## Treasurer's Report:

The 2002 Treasurer's Annual Report was reviewed and approved (copy attached). End of year balances: Checking: \$4,775.83; Endowment Savings: \$7,826.33; Endowment CD: \$14,150.00. R. Sheay and G. Pierson were thanked for auditing the report. The current Treasurer's Report (as of Feb. 19, 2003) was also distributed (copy attached). Current balances: Checking: \$10,613.75; Endowment Savings: \$10,106.33; Endowment CD: \$14,150.00. Also distributed/reviewed was a 2002 Allegheny Budget Variance Report. K. Jolly noted that 2002 was the best budget year for the Allegheny in quite a while, owing to the financial success/contributions received from the hosts of the two 2002 Section Meetings, as well as several other significant financial contributions. After further discussion, it was decided

the 2003 Budget would be finalized by the Exec. Comm. via e-mail after the Winter Meeting.

#### **Future Meetings:**

Ned Karger, in his new role as Allegheny Program Committee Chair, provided an up-date on the Section Meeting Host schedule, as follows: Summer 2003 - Rothrock Chapter; Winter 2004 - MD-DE Division; Summer 2004 - WV Division.

The Rothrock Chapter provided an up-date on the plans for the Summer Meeting, which is scheduled for July 13-15 at State College, PA, with a theme of "Cutting Edge Forestry."

#### **Winter 2005 Regional Meeting Proposal:**

K. Jolly provided an up-date on an initiative from the National Capital Section to join up with the Allegheny and Appalachian Sections to hold a three-Section Regional Meeting, tentatively scheduled for Winter 2005 (which would be in place of the Allegheny holding its own individual Winter 2005 Meeting). The tentative location would be somewhere in the "general area" between Richmond and WV. The National Office would be instrumental in helping the three Sections coordinate the planning of the regional meeting (theme, speakers, logistics, etc.). The Exec. Comm. approved sending a response back to the National Capital Section agreeing to the "general concept," and asking them to explore the idea further - e.g., to develop a tentative meeting theme, location, and financial plan - for the Exec. Comm. to then review and discuss further.

#### **Membership Report:**

Mike L. and Jack W. reported that the Allegheny Section only needed five more new members to reach its membership goal, and encouraged everyone to continue to recruit new members. Current Membership (as of January 2003) is 1,152. Several suggestions were mentioned to increase membership, including emphasizing the need for local chapters to be active in their efforts, and better interaction with Student Chapters (mentoring, visiting as a guest speaker at Student Chapter meetings, better tracking of students after graduation by obtaining their home address [in addition to their school address] on their SAF Student Application). Mike L. noted he would follow-up with the National Office in regards to obtaining students home address on the SAF Application form.

#### **Bob Bauer Memorial**

Mark Webb advised that efforts are underway to establish a Bob Bauer Scholarship Fund ("Student Award") at Penn State University. The Scholarship/Student Award would be for \$1,000, and preference would be given to forestry transfer students from Mt. Alto to Penn State with at least a 3.0 GPA. To establish the Fund, a minimum of \$20,000 is needed; to date, approx. \$7,500 has been contributed. A group of people is currently working to develop an informational brochure to promote donations to the Scholarship Fund; meanwhile, donations for the Bob Bauer Scholarship Fund (payable to Penn State) can be sent to Penn State, in care of Charles Straus.

Mike L. suggested the Allegheny Section should go further in recognizing Bob Bauer's many contributions to forestry, and suggested naming the Outstanding Service to Forestry Award after Bob. The Exec. Comm. approved this unanimously, and the Award will be known as the "Bob Bauer Outstanding Service to Forestry Award" in the Future.

It was also noted that Bob had chaired the Ben Roach Forum for 15 years, and that the Forum will be re-named the Roach/Bauer Forum at the upcoming April 24 Forum. The Forum will also give a special presentation to the family. Mark W. requested that everyone continue to remember Bob's wife Connie and the family in their prayers during this difficult time.

#### **Mt. Alto Student SAF Chapter:**

The Exec. Comm. received a copy of the by-laws for the establishment of a Student SAF Chapter at Mt. Alto for review/approval/forwarding to National Office. The Exec. Comm. approved the document, subject to final review to ensure there were no conflicts with the Allegheny by-laws.

#### **PA Forester Fund Grant:**

The PA Division received a Forester Fund Grant in 2002 to help produce a History of Pennsylvania Forestry video; the Division is continuing its fund-raising efforts to support the project, and has completed a "rough cut" of Jim Nelson's history talk at the present time.

*(Continued on page 10)*

*(Continued from page 9)*

**Executive Director Report:**

Jack W. noted that four issues of the Allegheny News were produced in 2002, and requested/received assistance from the Exec. Comm. for coordinating the next paper donation from Glatfelter. Jack also noted he has been active in the PA Licensed Forester initiative, and reviewed two items of correspondence with the Exec. Comm. requesting Allegheny support from the Teddy Roosevelt Conservation Alliance and representation on the PA Tree Farm Committee.

**Council Report:**

Mike L. noted that deadlines are coming up for the Presidential Field Forester Award, and urged all Div/Chp to send in their nominations to Chair K. Kane. Mike also mentioned that the Leadership Academy was still being discussed by Council (in regards to whether to have it this year, or wait until next year), and that a search for the National Executive Director position recently vacated by B. Banzhaf is on-going, and that the Forester Fund finances are tighter due to market downtown. Mike also advised of the upcoming locations for the National Convention, and noted that the possibility still exists that the Convention may be held in the Allegheny Region in 2006.

**Adjourn:**

Being no further business, M.Lester proclaimed the Exec. Comm. meeting adjourned.

## **General Business Meeting Minutes February 21, 2003**

K. Kane conducted the general business meeting, providing the membership a synopsis of the Exec. Comm. discussion items from Feb. 19. The following additional business items were discussed at the General Business Meeting:

**Penn State Goddard Chair:**

Mark Webb advised that there was an opportunity for the SAF to sponsor the Goddard Chair room in the new forestry building at Penn State. As a sponsor, the SAF would be recognized by a plaque in the building. The cost to sponsor this is \$25,000, which can be paid over five years; however, the pledge needs to be sent in fairly soon. Those interested in contributing should contact Mark for more information.

**Misc. Announcements:**

Pennsylvania - it was noted that PA is currently writing new Water Plans for the state. The committee membership includes spots for resource professionals; PA foresters were urged to get involved/get on the committees. The upcoming PFA meeting was announced, and it was noted that Penn State Mt. Alto is celebrating 100 years.

West Virginia - G. Juergens announced the upcoming WV Division Meeting, and urged SAF members to send in comments to the USDA Forest Service to support forest management on the National Forests.

NIPF Working Group - M. Buccowich made an announcement regarding the activities of the SAF NIPF Working Group.

**Adjourn:**

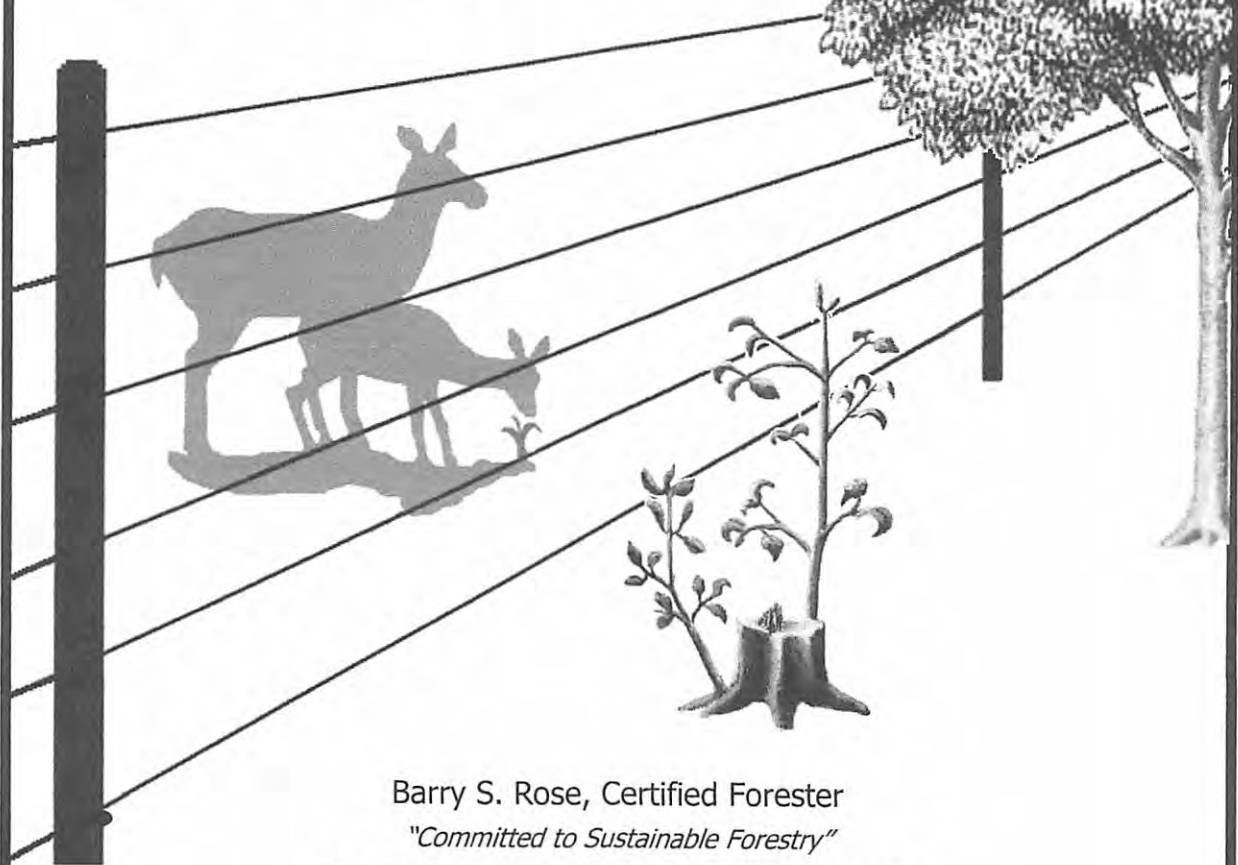
Following the discussion of these additional items, and the previously mentioned Exec. Comm. items, K. Kane adjourned the meeting.





Ground  
**Herbicide Applications**

Electric & Woven Wire  
**Deer Exclosure Fences**



Barry S. Rose, Certified Forester  
*"Committed to Sustainable Forestry"*

P.O. Box 319, Lawn, PA 17041 (717) 964-2264

[www.ForestRegeneration.com](http://www.ForestRegeneration.com)

# Allegheny Society of American Foresters 2002 Treasurer's Report

## BEGINNING BALANCES (on January 1, 2002)

Checking Account	\$ 5,519.95
Endowment Savings	\$ 3,432.85
Endowment CD	\$ 10,000.00

## CHECKING ACCOUNT INCOME:

2002 Allegheny Dues	\$ 8,456.75 [A]
2002 Div/Chp Dues (pass through)	3,133.75 [B]
2002 Winter Meeting-Forester Fund	724.00 [C]
2002 Winter Meeting-Silent Auction	698.00 [C]
Contributions [D]:	
Maryland-Delaware Division	\$ 2,000.00
Pennsylvania Division	1,500.00
W. Wolf	500.00
R. Sheay	500.00
D. Galway	140.00
S. Goodman	100.00
R. LaBar	90.00
J. Himel	10.00
PA Forester Fund Grant (pass through)	\$ 600.00
Summer Meeting "Seed Money"/Loan	\$ 1,500.00 [E]
Checking Account Interest	\$ 16.15
Total Checking Account Income:	\$ 19,968.65

## CHECKING ACCOUNT EXPENSES:

2002 Div/Chp Dues (pass through)	\$ 3,133.75
PA Forester Fund Grant (pass through)	600.00
Summer Meeting "Seed Money"/Loan	1,500.00 [E]
HSD Assessment	482.16
Allegheny News (4 issues/Bulk Mail Imprint)	6,263.18
Executive Director Stipend	4,400.00
Executive Director Expenses	2,210.00 [F]
Executive Director Bonus	500.00 [G]
N. Hardwoods 1997 Dues (check re-issue)	40.75
Awards	255.93
Reginald Forbes Art Awards	280.00 [H]
Student Travel	200.00
Endowment Savings Payback	830.00 [I]
Administrative Expenses-Postage	17.00
Total Checking Account Expenses:	\$ 20,712.77

CHECKING ACCOUNT TOTAL INCOME LESS EXPENSES \$ (744.12)

CHECKING ACCOUNT ENDING BALANCE \$ 4,775.83

ENDOWMENT SAVINGS BEGINNING BALANCE \$ 3,432.85

### Endowment Savings Activity:

Contributions	\$ 7,490.00 [J]
Contributions transferred to CD	\$ 4,150.00 [K]
Interest	\$ 30.47
Interest (received from CD)	\$ 193.01
Endowment Savings Payback	\$ 830.00 [I]

ENDOWMENT SAVINGS CURRENT BALANCE \$ 7,826.33

ENDOWMENT CD BEGINNING BALANCE	\$ 10,000.00
Endowment CD Activity:	
Interest	\$ 193.01
Interest transferred to Endow. Sav.	\$ (193.01)
Contributions (transferred from Sav.)	\$ 4,150.00 [K]

ENDOWMENT CD CURRENT BALANCE \$ 14,150.00

ACCOUNT SUMMARY: ENDING BALANCES (on December 31, 2001)

Primary Account (Checking)	\$ 4,775.83
Endowment Savings	\$ 7,826.33
Endowment CD	\$ 14,150.00

NOTES:

[A] This amount reflects 2002 dues that were actually received in 2002. The total amount of 2002 dues received was \$12,721.75. The difference - \$4,265.00 - reflects the 2002 Dues that were received and deposited in 2001 (as noted in the 2001 Treasurer's Report).

[B] This amount reflects 2002 Div/Chp dues that were collected for pass through in 2002. The total amount of 2002 Div/Chp dues received was \$4,704.25. The difference - \$1,570.50 - reflects the 2002 dues that were received/passed through in 2001 (as noted in the 2001 Treasurer's Report).

[C] Amounts collected and forwarded to the Allegheny from the Maryland-Delaware Division, 2002 Allegheny Winter Meeting Host.

[D] Contribution designations are as follows: (1) MD-DE Div: split \$1,000 for General Operations, \$1,000 for Chair Convention Travel Support; (2) PA Div: for General Operations; (3) W. Wolf: to re-imburse the Allegheny for 2001 WVU Travel; (4) R. Sheay: for Executive Director bonus; (5) D. Galway: for R. Forbes Art Awards; (6) S. Goodman: for General Operations; (7) R. LaBar: for R. Forbes Art Awards; (8) J. Himel: for Student Support.

[E] This figure represents \$500 in "Seed money" and a \$1,000 "Loan" to support the Keystone Chapter (Allegheny 2002 Summer Meeting Host) by providing an advance to defray upfront meeting expenses, as approved by the Executive Committee. This amount has been returned "in full" to the Allegheny.

[F] Amount reflects a \$30 increase in expenses for last three quarters of 2002.

[G] Bonus funded completely via designated donation [as noted above in item D].

[H] The R. Forbes Art Awards are funded through designated contributions. Fund balance at the beginning of 2002 was \$50.00. Contributions received were \$230.00 [as noted above in item D]. Awards presented were \$280.00; consequently, the end of the year balance for this fund is \$0.00.

[I] This is the second / final re-payment of a \$1,630.00 "internal loan" taken from the Endowment Savings Account in 2000 to cover an Operations Budget shortfall. This loan has now been re-paid in full.

[J] Thanks to these contributors: A. Day; K. Funderburke, Jr.; K. Kane; R. Rumpf; R. Sheay; R. Siefert; J. Winieski; R. West; W. Wolfe; G. Bamford; G. Pierson; J. Benton; T. Lyon; J. Mallow; J. Nelson; F. Hennion; K. Jolly; T. Kaden; H. Kriebel; D. Marquis; D. McGill; R. Melton; C. Newlon; E. Rast; S. Resh; W. Scherer; S. Stout; D. White; H. Wiant; C. Glattfelder; C. Smith; B. Stout; S. Cary; D. Kincaid.

[K] Amount reflects those contributions which were received before CD renewal date of 12-3-02. Remaining contribution amounts will be transferred to CD at next renewal date of 6-3-03 (along with further contributions that will be received in 2003).

Respectfully prepared,  
Kenneth W. Jolly, Secretary/Treasurer

Audit Confirmation:  
Ronald J. Sheay, Auditing Committee Chair

# Valley Forge SAF Spring Meeting

By Charles Newlon and Duane Green

Fourteen members of the Valley Forge SAF Chapter met on May 29, 2003 at Oakbourne Park in West Chester, PA and were introduced to the park's hazard tree management program, their Forest Stewardship Plan, and were treated to a personal tour of the arboretum and the historic Oakbourne Mansion.

**Duane Green** was the VF SAF program manager for the Oakbourne meeting and Duane and **Charlie Newlon** provided the program narration. After the program, **Bob Girvin**, VF SAF Secretary/Treasurer, prepared a dinner barbeque for the group. A DBH and tree height

estimation contest was held during the tour. Prizes for best guesses included a wheelwright's hammer, and a joiner's mallet made from found woods by Duane Green and a hiking staff made from an invasive Norway maple by Newlon. The height of the park's architecturally unique historic twin tank water tower was also a subject of the height-estimating contest. **Mike Hoppus** was the grand prizewinner for the contest.

Councilman **Tim Kaden**, SAF District VII Representative, spoke to the group of his decision to run for the position of SAF Vice President

in the election this September. He urged everyone to participate in this vote and also in the Allegheny SAF votes, one for the Chair position made available by the untimely death of Bob Bauer and for the Vice-Chair who will assume the Chair in two years. The result of these votes will choose our top leadership roles for the next four years.

The next Valley Forge Chapter meetings include: August 16<sup>th</sup> - Tour of Stroud Water Research Center, Oxford, PA and November 6<sup>th</sup> - Products of the Urban Forest," Soda House, Hagley Museum & Library, Wilmington, DE. ❄

## Historical Marker Recognizing Mont Alto is Dedicated

By Holly Cieri

The Society of American Foresters and the PA Bureau of Forestry, in conjunction with the PA Historical & Museum Commission, participated in the dedication of a formal marker recognizing the founding of the Pennsylvania State Forest Academy, now Penn State Mont Alto. The marker was unveiled at the entrance to the campus.

Penn State Mont Alto celebrated the 100<sup>th</sup> anniversary of its founding on May 13, 2003. The Academy was

the first, and many believe the only, forestry school founded by a state or Commonwealth in the U.S.

"The pioneers who stewarded Pennsylvania's forests began receiving their first formal training in 1903, in an experiment in environmental education unparalleled in the United States," said Dr. David Gnage, CEO of Penn State Mont Alto. "The Commonwealth of Pennsylvania was very progressive in its approach to environmental conservation and commitment to managing its natural resources in the early 1900s. Today we applaud the Commonwealth of Pennsylvania for its foresight in America."

Dr. Gnage explained that for the first 60 years of its existence, Penn

State Mont Alto educated only foresters, thereby providing not only the Commonwealth but many other states and federal agencies their first professionally trained foresters, individuals who introduced conservation and land use concepts we take for granted today. "We count among our alumni more than 13,000 individuals who have walked, rode horses, or driven across the bridge over the Little Antietam Creek at the entrance to this historic campus. Today these alumni are dispersed all over the world, in occupations as diverse as forestry, government service, business, medicine and allied health," he said.

Also speaking at the event were Dr. James Grace, PA's state forester and Kenneth C. Wolensky, Ph.D., historian in the division of history for the Pennsylvania Historical and Museum Commission.

For more information on Penn State Mont Alto's Historical Marker Dedication, call University Relations at (717) 749-6110. ❄





# ANSAF Endowment Fund at \$17,695 (and Growing!)

By Ron Sheay, Non-Ad hoc Coordinator

The Allegheny Society of American Foresters Educational Endowment Fund has received \$17,695 of contributions from 111 members and five organizations since the drive was started near the end of 2002. Most Allegheny members have been, or shortly will be, contacted by their state division or chapter representatives to consider making a contribution to the long-term stability of our five-state professional society. I extend a huge "Thank You" to those who have already contributed. To those who have not yet responded, there is still time to leverage your donation through the generous offer by an anonymous member - act now!

Raising money for any worthwhile cause is not easy. Should you have any questions concerning the Educational Endowment Fund effort, I encourage you to contact any non ad hoc committee member who has freely given their time and money to this endeavor. They are: Jim Nelson, Wilbur Wolf, Charles Newlon, Jack Winieski, Alex Day, Mark Webb, Susan Stout and Roy Siefert from the Pennsylvania Division; Tim Kaden, Jim Mallow and Steve Resh from the Delaware/Maryland

Division; Roger Sherman and Dave McGill from the West Virginia Division and George Pierson and myself from the New Jersey Division.

Recall that ONLY the interest earned from the fund will be used for merited educational purposes and ALL contributions will be added to the principal. Your donations will help educate our members and the public now and far into the future - the degree to which we are successful depends on our individual commitment.

## Organizations Just Starting To Donate

Although our concentration for donations will be on our membership this year, we have received contributions from the following organizations:

New Jersey Division SAF	\$ 300.00
Gracie & Harrigan Consulting Foresters	200.00
New Jersey Tree Farm	100.00
Northern Hardwoods Chapter SAF	1,000.00
Pennsylvania Division SAF	<u>1,000.00</u>
<b>Total Contributions From Organizations</b>	<b>\$2,600.00</b>

## Individual Contributors Since Last Newsletter (57)

Les Alpaugh	NJ	Heather Gracie-Petty	NJ	V.U. Megnin	PA
Alfred Appel	VT	Duke Grimes	NJ	Raymond Miller	PA
David Babyak	PA	Chrissy Harrigan	NJ	David O'Barto	PA
Andrew Blazewicz, Jr.	PA	Joe Haug	NJ	Ernest Ogden	MD
Patrick Brose	PA	Ralph Heilig	PA	Roxane Palone	PA
Charles Brown	PA	Frank Hennion Memorial	NJ	John Perry	NJ
Tom Bullock	NJ	Paul Higby	PA	Blaine Puller	PA
Richard Cary	PA	Ed Hogan	NJ	Walter Rossman	PA
Tracy Cate	NJ	Tim Holtz	PA	Tony Santoli	PA
Terry Clark	MD	Keith Horn	PA	Herb Seidel	NJ
Robert Cockroft	MD	George Howard	NJ	Austin Short	DE
Bill Corlett	PA	James Klunk	MD	Daniel Snyder	PA
Dwight Fiedler, Jr.	OR	Allan Knox	PA	Peter Steger	NJ
Jim Finley	PA	Dick Lentz	NJ	David Steward	PA
Conrad Franz	NJ	Melvin Lewis	PA	Raymond Strang	MD
Henry Gehrold	PA	Richard Lewis	MD	Dave Trimpey	PA
George Gilmore	MD	Sam Mace	DE	Mark Vodak	NJ
Steve Goodman	NJ	Steve Maurer	NJ	Syd Walker	NJ
Manny Gordon	PA	Michael McKain	PA	Olin White, Jr.	NJ

**Total Contributed** \$ 4,950.00  
**Grand Total Received Since Last Newsletter** \$ 7,550.00

If your name has not appeared in the *Allegheny News* yet, you may rectify that by making a contribution payable to Allegheny Endowment and sending it to: Ron Sheay, 12 Glenwood Lane, Stockton, NJ 08559. (Please let me know if you've contributed and I missed your name) Have a great summer! ❄️

## "Reggie" Forbes Connections

John S. "Jay" Dunn, Jr., Chief, Employee Relations Division, PA Dept. of Conservation and Natural Resources

During my senior year (1964-65) at Delaware Valley College in Doylestown, Pennsylvania, I decided to take an elective in "Woodlot Management." There were three reasons for this decision: I needed the credits, Woodlot Management was an easy course (something seniors always looked for - I think the term was "a snap course.") and part of the course was a field trip to the professors home to visit his personal arboretum, and more importantly, enjoy hot homemade sticky buns freshly-baked by the professor's wife (her sticky buns were known throughout the Delaware Valley Campus).

Reginald D. Forbes was the Professor, he taught freshman English, as well as Woodlot Management and was a Forester by profession. Professor Forbes and his wife were wonderful people. I aced the course and somewhere along the way learned that a professional



Forester carried a Barlow knife.

In the mid 1970s, I found myself as a young Employee Relations Chief for the Department of Environmental Resources meeting with Secretary Maurice K. Goddard, along with Ed Seladones, Deputy for Administration and Dennis Butler, Director of Personnel.

I do not remember the subject of the meeting anymore, but it was not going well. At some point, for reasons that also escape me now, I mentioned a Barlow knife. Secretary

Goddard looked at me kind of funny and asked how I knew about a Barlow knife. I explained about the Woodlot Management course and Reginald Forbes. Secretary Goddard looked at me again and in that booming voice that is often imitated but never duplicated, said "Dunn, you knew old Reggie!" Turns out they were old friends both professionally and personally. At that point Secretary Goddard turned to Ed Seladones with a smile and said, "Ed, now I know why we have been getting better answers out of Personnel."

The rest of the meeting went well, as did most of those that followed. Now that I look back on 31+ years with Pennsylvania DER and DCNR, I like to think that my connection with sticky buns, Woodlot Management, Reggie Forbes, and a Barlow knife helped me along the way. It certainly didn't hurt!

**Dr. Phil Craul**

Extracted from February 22, 2003 letter to Allegheny News Editor Jack Winieski

Dear Jack,

Thanks for the copy of the Summer Issue of the newsletter with the article on Ash Hough and the picture of Reggie Forbes. Reggie always had that formal bearing and his language was very "proper." One of the ironies here is that I married into an artist family. Both of my late wife's parents were artists of the "Pennsylvania Impressionist School" (Bucks County) and her brother was an illustrator for National Geographic Magazine. I learned a lot about art over the years. In fact, it was Joanne's father who rediscovered the Daniel Garber mural that hung on the stage of Science Hall at Mont Alto that is now housed in the Michener

Museum in Doylestown, PA. Joanne's parents visited us in Chambersburg, fall of 1959 when I was teaching at Mont Alto, and her father immediately identified it. Nobody at Penn State at that time knew anything about it. However, it took nearly 40 years to get it off the stage and into a museum.

To add to the story of Reggie, I remember being in an orientation program for new scientists at the Southern Station in New Orleans in January 1964. Phil Wakeley, the old-time geneticist at the station gave a little history of the station and told the story of how he and Reggie were shot at one day in their Model "T" Ford touring car near Urania, LA in the early 20's. When they

confronted the culprit, he explained that "you two are 'dry agents' looking for 'moonshiners,' cause your license plate reads USDA." The poor guy didn't know it meant U.S. Department of Agriculture!

Well, enough of the ramblings. One of these days when I can't handle the snow anymore, I may be heading back to PA to be near my son in State College. Who knows, this old forester (which by the way, is my New York license plate - FORESTER - may get active again. If I were still in Renovo (with Paul Duck, Nick Lylo and Jack Paulhamus in the late 50s) the SAF Winter Meeting in Williamsport would have been an easy trip to attend. ❄️

# A Vote for Tim Kaden

By Ron Sheay

Tim Kaden is running for the office of Vice-President of the Society of American Foresters. I believe he is an excellent choice to lead SAF and I recommend a vote for him and here is why.

Tim began working with the Delaware Forest Service as a service forester in 1970. We met a year later at the Cooperative Forest Management Supervisors and Extension Foresters Conference in Bethel, Maine. One phrase by a speaker at the conference immediately bonded Tim and I. The speaker was from Maine and the title of his talk was "A Large Landowner Looks at the CFM Forester and His Program in Maine."

The large landowner was a paper company and the speaker was a forester working for that company. In his remarks about looking for the best attributes when hiring a service forester, he stated and I quote, "I would recommend that supervisors of service forestry programs, such as you, should be especially careful of picking and choosing applicants. A service forester should be an extrovert and individual who meets and talks easily with others, and preferably from the same area of employment. A forester born and raised in Brooklyn, NY or Hoboken, NJ would not be very effective in working up here with these "Maine Yankees." Well, since Tim was born in Brooklyn and I in New Jersey, we quickly joined forces and had a few comments to make at the end of this talk. We have been colleagues and friends ever since.

A few years later, Tim was promoted to CFM supervisor for Delaware and we spent many hours together at these CFM Supervisors-Extension Foresters meetings,

"solving forestry issues." From the very beginning both of us became very active in SAF affairs.

Tim's active committee work in the MD/DE SAF led to his election as Secretary/Treasurer, Vice Chair and eventually Chair in 1982-85. He was then elected to the Allegheny SAF offices of Executive Committee member, Secretary/Treasurer, Chair-Elect and then, Chair in 1994-97. During that span, he was the spark plug behind the establishment of the first Educational Endowment Fund, raising \$10,000 in just two years. He initiated the student mentoring program in 1996 and has been active with the program ever since. His peers elected him as Chair of the House of Society delegates in 1998, and in 2000 he was elected to represent the Allegheny and National Capital SAF units on the National SAF Council where he served as Cultural Diversity Chair. He was honored by his professional peers by being elected SAF Fellow in 2000, and received the President's Field Forester Award in 2001. Tim is well grounded and experienced in SAF procedures and current issues.

Tim's forestry career began with the State of Utah as a field forester after graduating from Utah State University with a Bachelor of Science degree in Forestry and Range Management in 1970. That same year he began employment with the Delaware Forest Service, advancing through field forester, CFM Supervisor, and Deputy State Forester positions with responsibilities for forest resource planning, forest utilization, forest fire control and budgets. Since 1955 he has been the land use planner for Delaware's Department of Natural Resources, Division of Parks and

Recreation. Tim has become well versed in many phases of forestry activities over his 33-year career. Again, these experiences would serve him well in dealing with surfacing SAF forestry issues if he were elected our next SAF Vice President and eventual President.

My personal experiences with Tim, leads me to say to you that he is open to new ideas and suggestions, he listens carefully and then takes the necessary steps to solutions within the context of the situation. He is a family man with a supporting wife, two grown children and a relatively new grandchild. We have both sat through Maine-Delaware basketball and baseball games, rooting for opposite teams together - he loves sports. One room of his home is a working model train museum and he is a civil war history buff. What more can I say? He's my kind of professional colleague and personal friend. Members of Allegheny SAF, I ask you to join with me in voting for and electing Tim Kaden as the next Vice-President and future President of SAF. ❄

**Next newsletter  
deadline  
is September 15, 2003**

Send articles in the form of  
Microsoft Word documents  
and photos as 300 dpi  
JPEG files and e-mail to:  
**ansaf@paonline.com**

# Campaign Statement - John A. Helms

Forestry in the US is changing rapidly. In particular, there is public debate on how both public and private forestlands should be managed. Other major issues include forest health, fuels and fire hazard, wildlife habitat, watershed management, fragmentation, declining land base, regulation, litigation, and certification. We have an unsustainable situation in which the US is harvesting less and importing more of its wood needs. To serve both society and our profession SAF must increase its involvement and effectiveness in addressing these issues, at all levels within the Society.

I am privileged to run for Vice President and am doing so because forestry in the US, and indeed worldwide, is at a threshold of opportunity and believe I can make a difference. Rapid change in public attitudes towards forest resources makes the potential role of SAF increasingly important. I want to help lead SAF's effort in carrying out that role and build on momentum established by past Presidents and Councils. I want to strengthen SAF so it is fully recognized and respected for its mission to serve employers, the public, and to enhance professional forestry.

I bring seven professional years as a field forester;

served 35 years as professor and researcher in Silviculture at the University of California; and for 5 years was head of UC's Forestry Department. I served as member and chair of SAF's Forest Science and Technology Board for seven years and am now completing my third year as member of Council. I am currently an officer in the International Union of Forest Research Organizations, and on the Board of Directors of the California Forest Products Commission.



We must recognize that the strength of SAF lies in the breadth of its membership. We cover diverse values from timber production to wilderness. We have a proud, 100-year history of managing this nation's most valuable natural resource - its forests. We must capitalize on this strength and tradition as the critical base on which SAF can establish credibility on all forest resource issues.

SAF's internal emphasis must enhance member enthusiasm, participation, collaboration, and professionalism - especially of students and young professionals as these groups represent the future of our organization.

SAF's external emphasis must focus on shared public values and the importance of management. We must provide employers, the public, and decision makers with science-based information and services aimed at balancing and sustaining the diverse potential uses and values from the forest.

I will listen to membership to set the agenda. I will heavily involve the considerable expertise of Council, HSD, FS&TB, and the Committee on Forest Policy. I will lead Council in guiding our national office to enhance its effectiveness. And I will be honored to serve as SAF's spokesman and advocate.

I have a passion for forestry and am proud to be a member of SAF. These are exciting and challenging times for the profession. I believe I have the necessary leadership skills, experience, and vision for forestry and request your consideration for my candidacy.

## ONE STOP SHOP.

**Northern-Grown Tree Seedlings**

**Pine:** Austrian, Balkan, Japanese Black, Pinyon, Mugho, Ponderosa, Red, White, Virginia

**Spruce:** Black Hills, Blue, Engelman, Norway, Serbian, White

**Fir:** Balsam, Canaan, Concolor, Douglas, Fraser

**Hemlock:** Canadian

**Birch:** European, Japanese, Gray

**Dogwoods:** Chinese, Gray, Silky, Siberian, White

**Locust:** Black, Bristly, Honey

**Maples:** Norway, Red, Silver, Sugar

**Oaks:** Black, Bur, English, Pin, Scarlet, Sawtooth, Red, White, Swamp, Willow

**Button Bush, Catalpa, Cherry, Red Cedar, Ginkgo, Poplar, Sumac, Serviceberry, Viburnums**

1-800-643-8319 Dept. 85-C

seedlings  
transplants  
liners  
container  
b & b

75 years of growing.

Over 150 Varieties available.



Key Code: 85F02

**A complete list is available upon request.**

MUSSE

Indiana, PA  
Phone 800/643-8319  
Fax: 724/465-9893  
wholesale@musserforests.com

forests inc

www.musserforests.com



## Campaign Statement - Tim A. Kaden



I am proud to be a forester and equally as proud to be a member of SAF. For the three plus decades of my professional career, I have been fortunate to have spent almost all of my time working in the field with private landowners, and rubbing elbows with

other government, industrial and consulting foresters. Just as I am committed to practicing forestry with skill and integrity, I am equally committed to SAF - the organization representing our profession in all spheres of influence. SAF has provided many of the opportunities for my individual growth and professional success.

Through my past SAF involvement in Division, Multi-State Societies, and more recently HSD and Council levels, I have witnessed dedicated, hard-working members and national staff manage current internal and external business while fine-tuning visions for the future of SAF. I have also seen how active membership can bring a unity of comradeship to the resolution of issues in an atmosphere of civil discourse. My exposure to SAF membership workings, from grassroots units to Wild Acres sessions has prepared and inspired me to continue service to our professional society. I ask for your vote in the upcoming election for Vice-President and offer a firm commitment to serve.

With the help and guidance of SAF Council and Staff, I believe I can be an effective messenger of SAF to all membership levels and to public and private audiences. As to projecting our strengths and improving our influences I believe we must:

- **Strengthen** and direct the delivery of our educational and leadership resources to the membership via all channels of communication; a well-informed spokesperson is our best ambassador, in image and content.
- **Maintain** a professional demeanor in issue resolve with peer contacts and activist groups, with unbiased, sound science-based input in discussion; professional respect earned one issue at a time.
- **Continue** the flow of information to the public and into the legislative processes at all levels of government; we have a responsibility to help shape public attitudes.

- **Address** everyday internal and external issues (membership, diversity, leadership training; private property rights, healthy forest initiatives, sustainability) thoroughly through dialogue in HSD and Council; as a profession, our positions must be consistent with our mission and responsible to society.
- **Never** compromise the standards of excellence that identifies our membership for professional competency and ethical standards with our public; we will enlist and retain public respect by exercising our responsibilities to them and the resources we influence.

The public is progressively recognizing our commitment to applying the best forest management practices to the land. Our voices are being heard within the chambers at all levels of policy decision makers. I would be honored to help direct our continuing positive influence in forestry related issues through service as your Vice-President. I believe I have the background, experience, confidence, and knowledge to effectively represent our membership and SAF our professional society. If elected I would serve the SAF to the best of my ability under my personal criteria of ethical conduct and integrity.

### Casey's Forestry Concepts

"A New Kind of Consulting"

**Income Tax Reduction • Conservation Education  
Restructuring Plans to Reduce Tax • Ordinance Development**

Lloyd R. Casey

1263 Palomino Drive

West Chester, PA 19380

Phone: 610-436-9424

email: lrcasey@attglobal.net

**I offer direct assistance to you and your clients with:**

All taxes associated with forest-related activities

Restructuring of business and management plans

Development of conservation education plans  
and programs

Formation and influencing of urban and rural  
forest-related ordinances, comprehensive plans, zoning  
and subdivision regulations

**I have over 30 years of experience in dealing with  
professionals and the public in these arenas**

# A Liability Trend in the Forest Products Industry

By Craig Ostheim, American Forestry Consultants Partner, Ebensburg, PA

As many of you may be aware, there was a recent jury verdict in Westmoreland County, Pennsylvania, regarding a logging accident. In October 1999, a logger felled a tree and was subsequently struck by a falling tree, which had been situated on the edge of a skid trail approximately 40 feet from where he was working. The individual unfortunately sustained injuries, which left him paralyzed below the waist.

In December of that year, legal action was brought against the landowner, the sawmill owners who purchased the timber, and the forestry-consulting firm, which marketed the timber - American Forestry Consultants. Without going into great detail, the claims made in the lawsuit were that the defendants were responsible for identifying and removing the tree that injured the logger. The case was presented that the logger lacked the knowledge or training necessary to recognize the potential hazardous condition. Following an approximately two-week trial in March 2003, the jury made an award of \$6 million, placing 80% of the responsibility with the sawmill and 20% with the forestry consultant.

Prior to the jury verdict however, I made what can best be called a business decision by reaching a settlement with the defendant. I say this because I believed then, and continue to believe, that we conducted our activities in accordance with the standards and customs of the forestry profession. We treated the timber purchasers and loggers with the highest level of respect for their knowledge and professional ability to properly and safely complete the

timber-harvesting project.

At the time of reaching the settlement, I believed that we had no liability or responsibility for the accident. I felt it to be in the best interest of my business to protect against an excessive jury verdict. Following the verdict, my partner and I were glad that we had made the settlement decision. The sawmill owners have appealed their portion of the verdict, and I am sure that it will take some time to reach a judicial conclusion.

Over the three and one-half years that the case went on, our legal representation served our best interests, and we deeply appreciate all the work accomplished on our behalf. I was forced to obtain new liability insurance, as the insurance company dropped our coverage after the lawsuit was filed. In the 26 years that I have worked in the forestry profession, I have felt there to be a very clear understanding of the individual responsibilities and duties of the landowners, the timber purchasers, the logger, and the forest consultants in regards to the execution of a timber harvesting project.

As a result of the jury verdict, I have and will continue to review agreements with my clients and the timber sale agreements between the landowner and timber purchaser. This is not that I feel that they have been lacking in their language, but rather an acknowledgement that in a court of law, meanings and definitions can be called into question.

We, as an industry and a profession, are now facing legal exposure for conducting our working relationships in the time-honored tradition of mutual trust and respect. There were times

during the trial when I heard statements made as to what was expected of the timber purchaser and forester. I must admit to being extremely surprised and disappointed by several of those statements. I have opinions regarding those statements, which I do not feel are appropriate to present in this article.

Finally, it is my understanding that the Sustainable Forestry Initiative of Pennsylvania (SFI) is planning a workshop in early October, to address liability and associated matters (see opposite page for information and registration form). As the result of my experience, I recommend that all parties in the forest products industry take advantage of every opportunity to become acquainted with the recent trends in liability issues connected with our conduct of business. The time spent at informative and open exchanges on liability and associated issues is a sound business investment. It can help avert potential legal damages to the forestry consultant and the related industries - in Pennsylvania and elsewhere. ❧

# A SYMPOSIUM ON MANAGING LOGGING RISK AND LIABILITY

**Sponsors:** SFI® of PA, Penn State School of Forest Resources, PA Tree Farm Program,  
PA Forest Products Association, Allegheny Society of American Foresters

**Date:** Thursday, October 2, 2003

**Place:** The Bryce Jordan Center, University Park Campus of Penn State

**Cost:** \$65.00 per person (includes lunch, parking, and materials)

**Time:** Registration begins at 7:45 a.m. Symposium will run from 8:45 a.m. until 4:00 p.m.

Topics to be covered include legal considerations for landowners, loggers, foresters and mills, written contract language, insurance, site disturbance and changing conditions, risk management, Occupational Safety and Health Administration (OSHA) Standards for logging operations, and more. Speakers will include Mark Gordon, Esquire, Partner in the firm of Pietragallo, Bosick, & Gordon, Chris LeDoux, Ph.D., USDA Forest Service, an OSHA representative, a risk management professional, an expert on insurance, and others. The symposium will provide some insights and will suggest resources for you to contact to deal with your specific concerns as they arise.

Pennsylvania SFI Continuing Education Credit as well as SAF CFE Credit will be given for attending the symposium to those who apply for such. Forms will be provided.

Overnight accommodations at special symposium rates have been arranged with:

MOTEL 6, 1274 North Atherton St., State College, (814) 234 – 1600.

RODEWAY INN, 1040 North Atherton St., State College, (814) 238 – 6783

IMPERIAL MOTOR INN, 118 S. Atherton St., State college, (814) 237 – 7686

DAYS INN PENN STATE, 240 South Pugh St., State College, (814) 238 – 8454

HAMPTON INN, 1101 East College Ave., State College, (814) 231 – 1590

---

## SYMPOSIUM REGISTRATION FORM

Name(s) of Attendee(s): \_\_\_\_\_

Company/Organization: \_\_\_\_\_

Address: \_\_\_\_\_

City, State, Zip: \_\_\_\_\_

Phone Number: \_\_\_\_\_

Check or Money Order for payment in full (\$65.00 per person) must accompany Registration Form.

Send to SFI of PA, 315 South Allen Street, Suite 418, State College, PA, 16801.

For further information call the SFI of PA office (814) 867 – 9299.

**SPACE IS LIMITED TO 700 PEOPLE – EARLY REGISTRATION IS ENCOURAGED**

## Elections

By Mike Lester

The elections for Allegheny Officers will be coming up in the September edition of the Allegheny News. But before we can have elections, we need candidates.

It has been the source of more than a little concern that the Allegheny SAF has experienced difficulty in securing candidates for elections. This is particularly vexing, since the Allegheny has so many competent leaders. Also, if you want to compete for a leadership position, don't wait for someone to contact you. You can use my contact information in the back of the Allegheny News, and contact me

directly. All Professional and Technician members in good standing are eligible to run. I realize that we are all pretty busy these days, and serving in a leadership capacity takes some effort. But I'm willing to bet that when you asked folks who have served in an Allegheny SAF leadership role, they will tell you that it is worth it. I can tell you that I have certainly enjoyed my time as your chair, and that I feel that I've gotten at least as much out of the experience as I've put into it. I know our current Chair, Ken Kane will tell you the same thing.

This election will be a little unique, because not only will we be electing a Chair-elect and an Executive Committee, we will also be

electing a Chair. This is due to the tragic loss of Bob Bauer, our Chair-elect, last winter.

We will also be electing four members of the Executive Committee. There may be no more than two from any Division, so we need qualified candidates from every State Division. In the last election, only the incumbents ran for the Executive Committee. In one sense, this was fine, as all four members had served the Allegheny well. On the other hand, as Ron Sheay pointed out, elections are about choices, and there weren't any in that election. If you would like to run for the Executive Committee, as Chair, or Chair-elect, please contact me. It's a great experience. ❄

## Joint Meeting Proves Valuable for Many

The Pennsylvania Chapters of The Wildlife Society, Society of American Foresters, American Fisheries Society, and Soils & Water Conservation Society sponsored, developed and conducted a one-day workshop titled, "*Natural Resource Planning on Private Lands.*" The workshop was held in conjunction with the joint meeting/conference on April 10-11, 2002. The workshop was designed to bring participants from various disciplines together to gain insight into natural resource planning from the perspective of other resource professionals.

The workshop committee divided the participants into teams of approximately six members each. Each team was comprised of professionals representing a diverse array of backgrounds. After an introductory lecture on planning by Dr. Jim Finley of Penn State University, the teams were led to the field, along nationally renowned Spruce Creek, to develop the elements of a management plan. A facilitator posing as the landowner accompanied each team. The teams were provided with a set of landowner objectives, cover maps, soils maps and descriptions, topographical maps, and some description of the site.

The teams had to decide how to approach reconnaissance, landowner interviews, management priorities, data collection, etc. As might be expected, the committee established conflicting or difficult objectives, and the site itself presented challenging management opportunities. This obviously spurred plenty of

discussion and ideas from the perspectives of a diverse professional group.

After several hours of fieldwork, the teams re-entered the classroom to develop their overall management strategy and prepare a presentation for the remainder of the class. In all, the participants gained valuable insight into natural resource planning from different perspectives, were exposed to new and stimulating ideas, and had an opportunity to network with professionals from other fields that might provide assistance in future resource planning issues. Post workshop evaluations indicated the event was valuable and enjoyable for all.

This 2003 joint meeting was dedicated to Bob Bauer. Bob was a major contributor to the first joint meeting of PA-TWS and SAF (2000), as well as the 2003 meeting before his untimely and tragic death this past New Year's Eve. In recognition of Bob's enthusiasm, energy and support for education, professional development and professional ethics a committee developed a scholarship fund at the Penn State School of Forest Resource.

Proudly, professionals from all four organizations attending the joint meeting banquet contributed generously during a special raffle to raise funds for this special scholarship fund. A total of \$510 was raised and contributed to the fund. Those wishing to contribute further may do so by sending donations to: Charles Strauss, Penn State School of Forest Resource, Bob Bauer Fund, 113 Ferguson Building, University Park, PA 16802. ❄



# Forestry Research Journal Focuses on Remote Sensing

By Jeff Ghannam

The Society of American Foresters has published a special issue of *Forest Science* that showcases how remote sensing is being used by foresters to meet ever-increasing demands on forests. The special issue of SAF's internationally renowned forestry research journal includes a dozen papers by many of the most important researchers in the remote sensing field.

Although remote sensing has been an integral part of forestry since the integration of aerial photographs into forest inventory in the 1920s, the rapid pace of sensor development and information needs in the past three decades has led to an explosion of forestry remote sensing research and applications.

"Demands on forests are increasing and the information required to sustainably manage forests in the face of this demand must also increase," writes Randolph Wynne, associate professor of forestry at Virginia Tech and editor of the special issue. "Foresters are being asked to increase production of wood and fiber on an ever-decreasing land base while maintaining the important supplies of public goods (viable fish and wildlife populations, clean water, and recreational opportunities) that well-managed forests have always provided. To meet this challenge, forest managers will require new types of information, and remote sensing will be an important piece of the overall information puzzle."

The 12 papers in this issue are a cross-section of the scope of data and applications in forestry remote sensing. The data includes aerial photographs, lidar data, hyperspectral images, radar data, and Earth resource satellite data. The data is being used for forest inventory, ecological land type delineation, harvest detection, chlorophyll mapping and monitoring, windthrow detection and mapping, and global forest cover mapping.

*Forest Science*, published bimonthly in February, April, June, August, October and December, for more than 45 years has been publishing significant forestry research articles on silviculture, soils, biometry, disease, recreation, photosynthesis, and tree physiology as well as all aspects of forest management and harvesting and policy analysis. All papers in the special issue were peer reviewed under the guidelines of *Forest Science* and first published as a special issue of that publication in June 2003.

The 288-page, soft cover special issue costs \$30 for SAF members, \$37.50 for nonmembers. For information about the special issue and to order online, visit the SAF Store at [www.safnet.org](http://www.safnet.org) and go to the Books section, or call (301) 897-8720, ext. 106.



## THE NELSON PAINT COMPANY

From the first name in forestry paint - Nelson Paint has been making high quality forestry paints and products for over 60 years.

### Nelson Paint and Equipment offer:

Vibrant, non-absorbing colors  
Easy application with Nel-Spot gun  
Long-term and short-term marks

**BUY FACTORY DIRECT  
at**

**1-800-236-9278**

or online at

**[www.nelsonpaint.com](http://www.nelsonpaint.com)**

# Current Status of the Pennsylvania Forest Inventory

By William H. McWilliams, Carol A. Alerich, and James Westfall, Foresters, USDA Forest Service; and Daniel A. Devlin, Forester, Pennsylvania DCNR Bureau of Forestry

The USDA Forest Service's Forest Inventory and Analysis (FIA) program has introduced a new annual inventory system that began for Pennsylvania in 2000. The new system has three phases. Phase 1 utilizes satellite remote sensing to stratify land into forest and other land uses.

Phase 2 consists of a grid of sample plots distributed evenly across Pennsylvania. Each year, 20 percent of some 5,000 plots are measured. This cycle allows all plots to be measured in five years. There are now 3 years of data (60 percent of plots measured) available for analysis. The measurements include traditional FIA variables and some new ones since the last inventory was completed in 1989. A major new component of the inventory is the Pennsylvania Regeneration Study (PRS), which is carried out on a subset of plots measured during the leaf-on season of the summer. Detailed understory measurements are collected to characterize tree regeneration and associated vegetation. A new feature of the PRS that began this year is the Exotics Survey, which has added 30 "invasive" plants to the list of understory species that are tallied. Both the PRS and the Exotics Survey are funded by the Pennsylvania Bureau of Forestry.

The other new part of the inventory is Phase 3, with measurements collected on 1 of 16

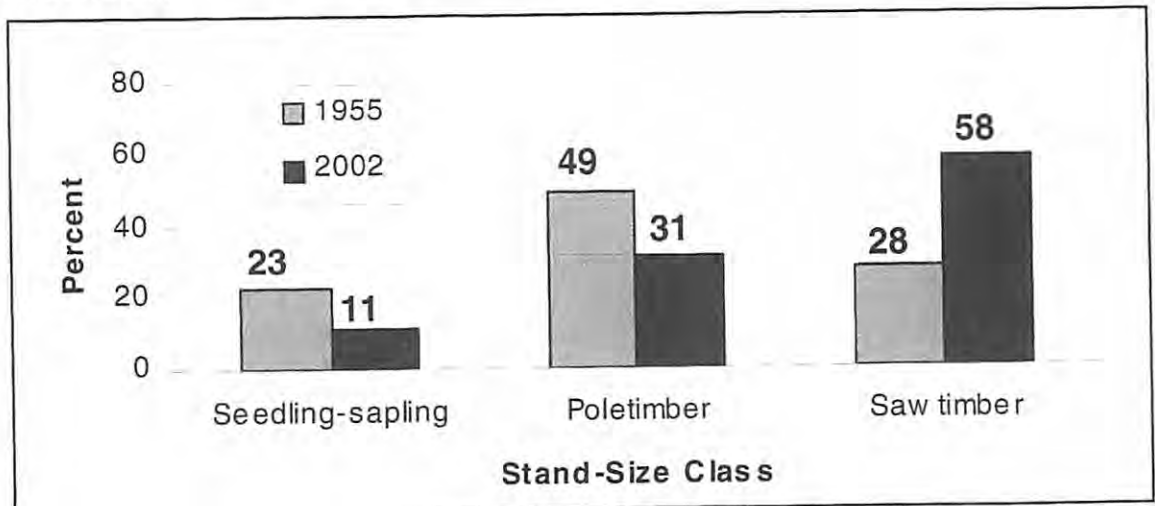


Figure 1. Area of forestland by tree-size class, Pennsylvania, 1955 and 2002. Tree-size classes are based on the sizes that dominate the FIA sample location: seedling-sapling (less than 5.0 inches in diameter at breast height), poletimber (5.0 to 7.0 inches and 9.0 inches for conifers and deciduous species, respectively), and sawtimber (larger trees).

Phase-2 plots. Phase-3 variables include crown condition, down woody material, soils, lichen community information, and other forest health-related attributes.

Early results indicate that the area of forestland is stable, although urbanization, parcelization, and fragmentation are occurring in certain areas, most notably in the eastern half of the state. The distribution of forestland by tree-size class is shifting from middle- to larger-sized trees (Figure 1). With this increase in average diameter across the state, Pennsylvania forests are attaining economic maturity. One issue of concern is that there currently are few young-successional forests (only 11 percent of the total forest area), a condition found in most of the major forest-type groups. This indicates that wildlife species dependant on young forests are being impacted.

All of the major forest-type groups exhibited stable acreage since the last inventory in 1989. With this new, more detailed information, we now know that forest types that

are characterized as having a dominant red maple overstory have increased by about one-third. For now, the oak types remain stable.

The inventory data reveal that the volume of growing stock trees (expressed in cubic feet) increased by 10 percent. However, this increase is much less than the 22 percent increases recorded for the previous two inventories completed in 1978 and 1989. The inventory of sawtimber (expressed in board feet, International 1/4-inch Rule) increased by 18 percent. This increase is far less than the 77 and 57 percent increases in 1978 and 1989, respectively. All the major species had significant increases in both growing-stock and sawtimber except sugar maple (Figure 2).

After 2 years of data from the PRS, there now is very solid evidence that the advance tree-seedling regeneration (ATSR) component of Pennsylvania's forests is lacking in more than half of the forestland that receives enough light for healthy seedling establishment. The routines used to evaluate the

sample data were constructed from accepted silvicultural guidelines for Pennsylvania. Samples with low ATSR had enough light to produce seedlings, but the inventory of seedlings revealed insufficient stocking to regenerate the existing canopy trees. A lack of oak regeneration is particularly worrisome because it suggests difficulty sustaining one of our most important species for wildlife and timber products.

Understory communities were evaluated to determine if there are enough tree seedlings to replace existing canopy dominants. Other species capable of attaining high forest canopy (above 40 feet) were included, as well as other woody

vegetation that usually yields low canopy (less than 40 feet). The findings also show that low ATSR is ubiquitous across a very diverse set of eco-regions (Figure 3). The area with the worst regeneration was the Plateau region, where about 6 of 10 samples did not have sufficient ATSR. The best regeneration

occurred in the Eastern Broadleaf - East region, but still only half of the samples had sufficient ATSR. The Eastern Broadleaf - West and Central Appalachian regions had about 55 percent of the samples with sufficient ATSR.

The FIA annual inventory is providing new and more detailed information on forest condition as each new panel of plots is measured. More competition from conflicting land uses makes the sustainability of existing forestland critical. Problematic regeneration is cause for concern because very large tracts of forestland are maturing across the state.

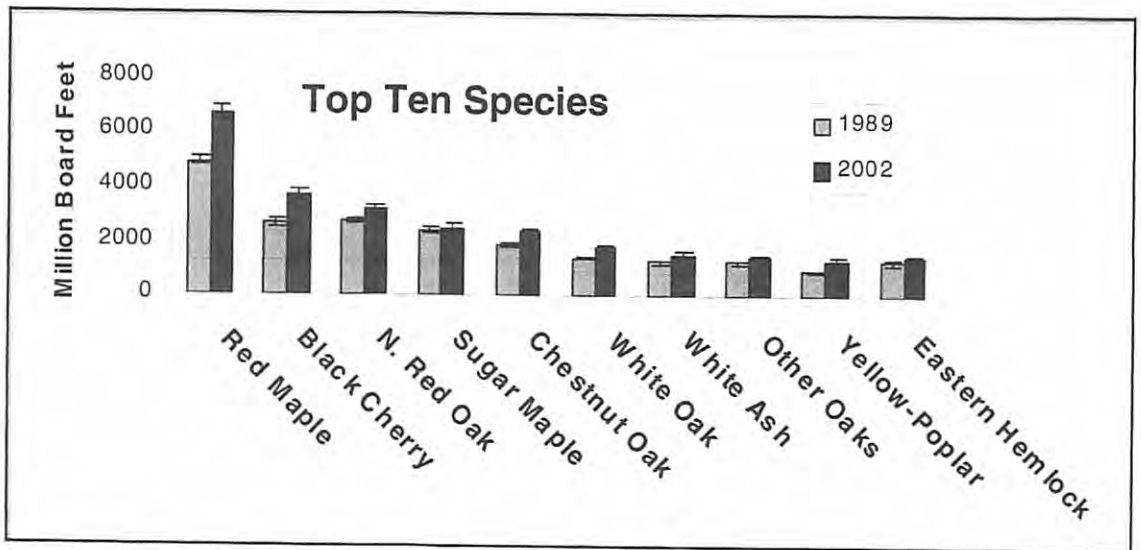


Figure 2. Volume of sawtimber trees by species/species group, Pennsylvania, 1989 and 2002. Sawtimber trees are at least 9.0 and 11.0 inches in diameter at breast height. Volume of sawtimber trees is the board-foot volume of the central stem of sawtimber trees from a 1-foot stump to a 7.0 and 9.0 inch top diameter outside bark expressed in International 1/4-inch Rule.

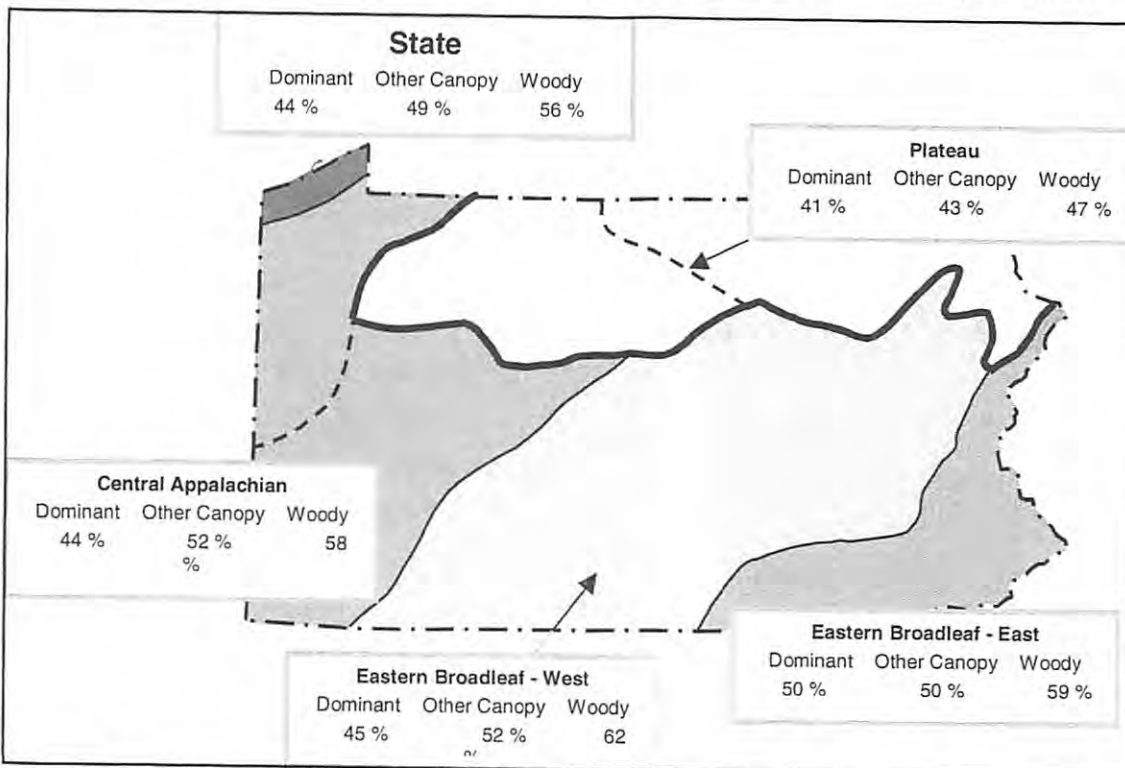


Figure 3. Percent of regeneration samples with advance tree-seedling regeneration (ATSR) under conditions where existing stocking levels are sufficient for seedling establishment, Pennsylvania, 2001-2002.

**West Virginia SAF Division Summer Meeting  
September 3-5, 2003  
Cedar Lakes, Jackson County, West Virginia  
Forest Health – Current and Continuing Issues**

**Registration Cost:**

SAF Members:	\$60	Registration fee includes Ice Breaker, Breakfast and Lunch on Thursday and Friday, Barbeque on Thursday, and all breaks.
Nonmembers:	\$75	
Students:	\$30	

**Continuing education credits:**

SAF Continuing Education:	10.5 Category 1 credits.
WV Pesticide applicators:	14 credits for Category 3, 7, and 14.

**Lodging:**

To reserve a room for the WVSAF Summer Meeting call Cedar Lakes front desk (304) 372-7860; they take most major credit cards.

**Room Options:**

Holt Lodge (48 rooms)

Two double beds, cable TV and telephone. NO SMOKING is permitted in any of these rooms  
\$59 per room (one or two people); \$5 for each additional person

Mountaineer Lodge (38 rooms)

Two double beds. Television (no cable) and telephone are in a "commons" area  
\$40 per room (one or two people); \$5 for each additional person

**Agenda:**

See accompanying page.

**Forest Health – Current and Continuing Issues  
West Virginia SAF Division Summer Meeting  
September 3-5, 2003 • Cedar Lakes, Jackson County, West Virginia**

Name: \_\_\_\_\_  
Address: \_\_\_\_\_  
\_\_\_\_\_  
\_\_\_\_\_  
Phone: \_\_\_\_\_  
E-mail: \_\_\_\_\_

**Registration (check one):**

<input type="checkbox"/> Member	\$60
<input type="checkbox"/> Nonmember	\$75
<input type="checkbox"/> Student	\$30

Special needs: \_\_\_\_\_  
\_\_\_\_\_  
\_\_\_\_\_

**Please make checks payable to WV SAF.**

**Mail to:**

Steve Stasny, WV SAF Secretary/Treasurer, P.O. Box 187, Summersville, WV 26651-0187  
phone: 304-872-0830; e-mail: s\_stasny@hotmail.com



# **West Virginia SAF Division Summer Meeting September 3-5, 2003**

Cedar Lakes, Jackson County, West Virginia

## **Forest Health – Current and Continuing Issues Meeting Agenda**

### **Wednesday, September 3, 2003**

5:00 PM – 7:00 PM	Registration
6:00 PM – 8:00 PM	Ice Breaker – Drinks and Munchies (dinner on your own)
8:00 PM – 9:00 PM	Executive Committee Meeting

### **Thursday, September 4, 2003**

7:00 AM – 8:00 AM	Breakfast
7:30 AM – 8:00 AM	Registration
8:00 AM – 8:30 AM	Welcome – Glen Juergens (Chair, WV SAF)
8:30 AM – 12:00 N	Field Workshop – Ice Storm Damage and Recovery John Rowe (Service Forester, WVDOP) – Ice damage in Jackson Co. Bill Grafton (WVU ES) – Invasive plants: New and old Dave McGill (WVU ES) – Sproutless Herbicide Applicator
12:00 N – 1:00 PM	Lunch
1:00 PM – 5:00 PM	Field Workshop – Quality Deer Management
1:00 PM – 1:30 PM	Shawn Fetter (Quality Deer Management Association) – QDM
1:30 PM – 5:00 PM	Vic Ford (MeadWestvaco) – EZject Herbicide Applicator Dave McClung (WVDNR)– McClintock Wildlife Management Area
6:00 PM	Barbeque

### **Friday, September 5, 2003**

7:00 AM – 8:00 AM	Breakfast
8:00 AM – 9:00 AM	Business Meeting
9:00 AM – 12:30 PM	Forest Health – Current and Continuing Issues
9:00 AM – 9:45 AM	Rich Widman (USDA FS FIA) – West Virginia's Timber Resource
9:45 AM – 10:30 AM	John Brooks (WVU DOF) – State Forests Inventory
10:30 AM – 11:00 AM	Break
11:00 AM – 11:30 AM	Butch Sayers (WVDOA) – Gypsy Moth Management
11:30 AM – 12:00 N	Randy Dye (Director, WVDOP)– State of Forest Health and the President's Healthy Forest Initiative (HR 1904)
12:00 N – 12:30 PM	Jill Hoff (WVDOA) – Sudden Oak Death
12:30 PM – 1:30 PM	Lunch

## Coming Events

### July

15-19 Allegheny SAF Summer Meeting, "Cutting Edge Forestry," Ramada Inn State College. Scott Cary at 570-473-7237 or scary@uplink.net

### August

5 Forest Sustainability Seminar, Trenton, NJ. Post seminar dinner and legislative reception at Trenton Club. Tom Bullock TFBLaw@aol.com

### September

3-5 West Virginia SAF Division Summer Meeting "Forest Health—Current and Continuing Issues," Cedar Lakes, Jackson County, West Virginia. Steve Stasny at (304) 872-0830 or s\_stasny@hotmail.com (see pages 26 and 27 for meeting agenda and registration form)

15 Deadline for articles and photos for Fall 2003 issue of *The Allegheny News*

21-28 XII World Forestry Congress, "Forests, Source of Life," Quebec City, Canada 418-694-2424, sec-gen@wfc2003.org

### October

2 Managing Logging Risk & Liability Seminar, Bryce Jordan Center, University Park, Penn State (see page 21 for details and registration)

24 - 25 MD Forests Association Annual Meeting, Clarion Resort, Ocean City, MD

25-29 SAF National Convention, Buffalo, NY

### December

15 Deadline for articles and photos for the Winter 2003-04 of *The Allegheny News*

### February 2004

Winter Meeting of The Allegheny SAF Hosted by the MD/DE Division

### March

15 Deadline for articles and photos for the Spring 2004 issue of *Allegheny News*

### Future Allegheny SAF Meetings

2004 Winter Meeting - MD/DE Division  
2004 Summer Meeting - WV Division

### Future SAF National Conventions

October 2-5, 2004 - Edmonton, Alberta Canada (with the Canadian Institute of Forestry)  
2005 - Houston, Texas

## Allegheny SAF Committee Chairs

### Auditing\*

Ronald J. Sheay  
12 Glenwood Lane  
Stockton, NJ 08559  
(h) 609-397-7886

### Awards\*

Kenneth W. Jolly  
1220 Youngs Farm Road  
Annapolis, MD 21403  
(o) 301-464-3065  
(h) 410-263-1989  
kjolly@dnr.state.md.us

### Communications\*

Charles J. Newlon  
2 Irving Lane  
Wallingford, PA 19086  
(o) 302-739-5195, Tuesdays  
(h) 610-872-6019  
cbnewlon@comcast.net

### Continuing Forestry Education Coordinator\*

Mark Vodak  
PO Box 231 Cook College  
Rutgers University  
New Brunswick, NJ 08903  
(o) 732-932-8243  
(h) 609-758-9449  
(f) 732-932-3222  
vodak@aesop.rutgers.edu

### Forest Health and Productivity (ad hoc)

Kurt W. Gortschalk  
USDA Forest Service Lab  
180 Canfield Street  
Morgantown, WV 26505  
(o) 304-285-1598  
(h) 412-627-4161

### Forest History (ad hoc)

Ronald J. Sheay  
12 Glenwood Lane  
Stockton, NJ 08559  
(h) 609-397-7886

### Foresters Fund (ad hoc)

Earl A. Higgins  
116 N. Waverly Street  
Shillington, PA 19607  
(h) 610-603-0846

### Forest Science Coordinator\*

Mary Ann Fajvan  
Div. of Forestry WVU  
PO Box 6125  
Morgantown, WV 26506  
(o) 304-293-3411, ext. 2423  
(h) 304-892-4515  
(f) 304-293-2441

### Membership\*

Ken Kane  
103 Tionesta Avenue  
Kane, PA 16735  
(o) 814-837-9391  
(h) 814-837-8357  
(f) 814-837-9633

### Nominations\*

Michael B. Lester  
244 Indian Creek Drive  
Mechanicsburg, PA 17050  
(o) 717-787-2708  
(h) 717-763-7072  
(f) 717-783-5109  
mlester@dcnr.state.pa.us

### Policy & Legislative (PLAN)\*

Timothy A. Kaden  
724 Green Winged Trail  
Camden, DE 19934  
(o) 302-739-4811  
(h) 302-697-7066

### Program\*

Douglas Ostergard  
PO Box 284  
South Main Street  
Pleasantville, PA 16341  
(o) 814-589-7143  
(h) 814-589-7143  
(f) 814-484-7563

### Student Coordinating (ad hoc)

Kim C. Steiner  
Forest Resources Lab  
Penn State University  
University Park, PA 16802  
(o) 814-865-9351  
(h) 814-234-8754

### Student Quiz Bowl

Elizabeth Brantley  
Penn State Mt. Alto  
1 Campus Drive  
Mt. Alto, PA 17237  
(o) 717-749-6200  
(h) 717-337-1284  
(f) 717-749-6069  
eab8@psu.edu

### Tellers\*

Susan L. Stout  
US Forest Service  
PO Box 267  
Irvine, PA 16329  
(o) 814-563-1040  
(h) 814-726-2023  
(f) 814-563-1048  
sstout/ne\_wa@fs.fed.us

\*Standing Committees

# Allegheny Society of American Foresters

## Officers

**Chairman**  
Kenneth C. Kane  
103 Tionesta Avenue  
Kane, PA 16735-1236  
(o) 814-837-9391  
(h) 814-837-8357  
(f) 814-837-9633  
gtmake@pennswoods.net

**Chairman-Elect**  
To be elected in  
September 2003

**Secretary/Treasurer**  
Kenneth W. Jolly  
1220 Youngs Farm Road  
Annapolis, MD 21403  
(o) 410-260-8502  
(h) 410-263-1989  
(f) 410-260-8596  
kjolly@dnr.state.md.us

**Past Chairman**  
Michael B. Lester  
244 Indian Creek Drive  
Mechanicsburg, PA 17050  
(o) 717-787-2708  
(h) 717-763-7072  
(f) 717-783-5109  
mlester@dcnr.state.pa.us

## Executive Committee

Francis J. Hennion  
145 Davis Road  
Franklin, NJ 07416  
(o) 973-827-1325  
(h) 973-827-6742  
mandfhen@aol.com

Jack L. Perdue  
5112 Main Street  
Grasonville, MD 21638  
(o) 410-260-8505  
(f) 410-260-8595  
jperdue@dnr.state.md.us

Karen J. Sykes  
PO Box 4015 Sc  
Morgantown, WV 26504  
(o) 304-285-1532  
(f) 304-285-1505  
ksykes/na\_mo@fs.fed.us

Howard G. Wurzbacher  
17374 N. Main Street Ext.  
Titusville, PA 16354  
(o) 814-484-9954  
(h) 814-589-7538  
hwurzbache@state.pa.us

## Executive Director

Jack Winieski  
PO Box 699  
Dillsburg, PA 17019-0699  
(o) 717-432-3646; (h) 717-432-3646  
(f) 717-432-3646  
ansaf@paonline.com

## Council Representative

Michael B. Lester  
244 Indian Creek Drive  
Mechanicsburg, PA 17050  
(o) 717-787-2708  
(h) 717-763-7072  
(f) 717-783-5109  
mlester@dcnr.state.pa.us

## Division Chairs

**Maryland/Delaware**  
Donald Van Hassent  
517 Bay Hills Drive  
Arnold, MD 21012  
(o) 410-260-8504  
(h) 410-757-5539  
(f) 410-260-8595  
dvanhassent@dnr.state.md.us

**New Jersey**  
Gregory S. McLaughlin  
1312 Old York Road  
Robbinsville, NJ 08691  
(o) 609-984-0062  
(h) 609-259-8122  
(f) 609-984-1427  
gmclaugh@dep.state.nj.us

**Pennsylvania**  
Ned R. Karger  
305 Kinzua Avenue  
Kane, PA 16735  
(o) 814-837-6941  
(h) 814-837-6819  
(f) 814-837-8401  
nkarger@collinsco.com

**West Virginia**  
Glen A. Juergens  
PO Box 210  
Marlinton, WV 24954  
(o) 304-799-4334  
(h) 304-799-6965  
(f) 304-799-6820  
gpjuergens@neumedia.net

## Chapter Chairs

**Keystone**  
Craig T. Houghton  
Penn State Mt. Alto, Campus Dr.  
Mont Alto, PA 17237  
(o) 717-749-6239  
(h) 717-532-3019  
(f) 717-749-6069  
cth2@psu.edu

**Northern Hardwood**  
Michael L. Hale  
610 E. Main Street  
Westfield, PA 16950  
(o) 814-367-5915  
(h) 814-367-5542  
(f) 814-367-5919  
halefor@penn.com

**Pinchot**  
Robert J. LaBar  
3070 Hemlock Farms  
802 Mustang Court  
Lords Valley, PA 18428  
(o) 570-775-9741  
(f) 570-775-9043  
forestry@ptrd.net

**Plateau**  
Christopher J. Guth  
296 Meadow Road  
Seneca, PA 16346  
(o) 814-463-7701  
(h) 814-676-5477  
(f) 814-463-7311

**Rothrock**  
Scott R. Cary  
Road 2, Box 488A  
Northumberland, PA 17857  
(o) 570-473-7237  
scary@uplink.net

**Valley Forge**  
Richard H. Widmann  
333 Calvert Road  
Merion Station, PA 19066  
(o) 610-557-4051  
(h) 610-664-2123  
rwidmann@fs.fed.us

**Western Gateway**  
Craig W. Ostheim  
208 Kennel Road  
Ebensburg, PA 15931  
(o,f) 814-472-4018  
(h) 814-266-7083  
cwosmo@aol.com