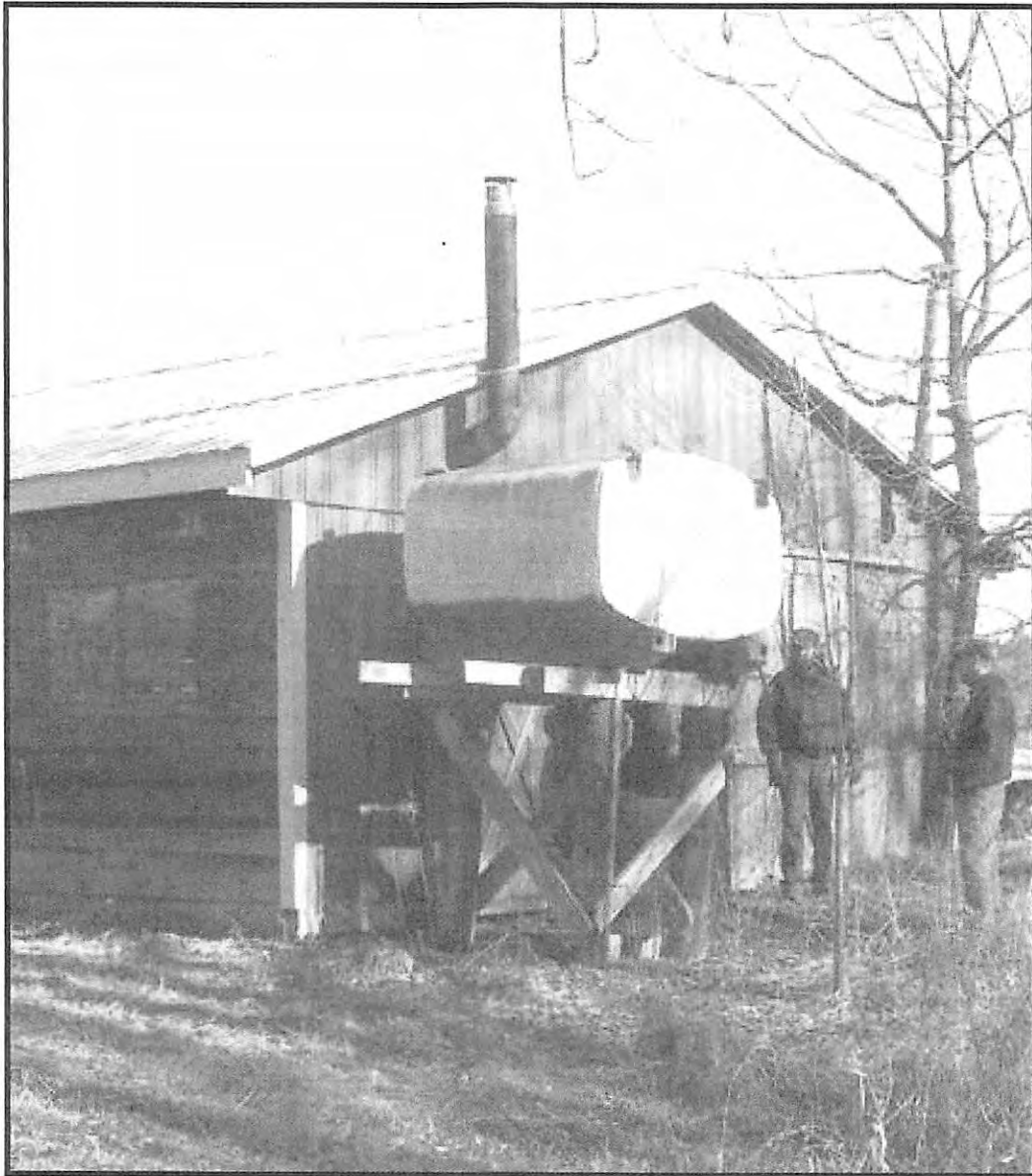


The

# Allegheny News



Allegheny Society of American Foresters  
**Spring 2007**



# \$200,000,000

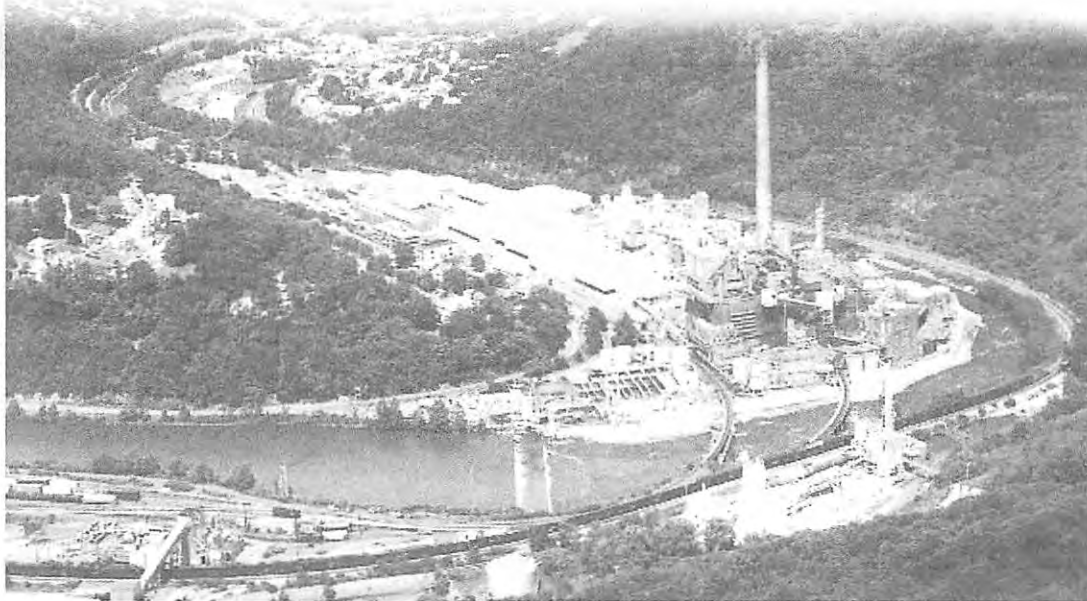
## Luke Mill Economic Impact



2006

Total Employment.....	1,065
Employee Wages and Benefits .....	\$89,900,000
Employee State Payroll Taxes	
Maryland.....	\$ 2,300,000
West Virginia .....	\$ 1,200,000
Pulpwood Purchases .....	\$51,000,000
Energy Purchases .....	\$38,700,000

*Note: \$200,000,000 includes other expenditures which are not shown in this breakdown.*



300 Pratt Street • Luke, Maryland 21540 • [www.NewPageCorp.com](http://www.NewPageCorp.com)

This issue of *The Allegheny News* made possible by a donation from **NewPage Corporation**

# The Allegheny News

Volume 16, No. 1

The Allegheny News is the official publication of the Allegheny Society of American Foresters. Published four times annually. Deadline for articles is December 15, March 15, June 15 and September 15. Subscription rate included in the annual Allegheny Society dues.

The mission of the SAF is to advance the science, technology, education, and practice of professional forestry in America and to use the knowledge and skills of the profession to benefit society.

## The Allegheny News

P.O. Box 699 • Dillsburg, PA 17019-0699

Editor Jack Winieski (ansaf@verizon.net)

Layout by Catherine Winieski Carter (catha63@epix.net)

## Table of Contents

Chair's Corner .....	1-2
Stewardship Manager for Gordon Natural Area .....	2
WV SAF Division Winter Meeting .....	2
In Memoriam: Hall, Allison and Nichols .....	3
Snow and Ice Postpone Student Quiz Bowl .....	4
2006 SAF District Fellows .....	5-7
2006 Allegheny SAF Awards .....	8-9
Foresters Attend SAF Winter Meeting .....	10-11
Allegheny Winter Meeting Photo Highlights .....	12-13
Reginald Forbes Art Show Winners .....	14
Allegheny SAF Internet Use Survey .....	15-16
(this is a self-mailer—affix postage and mail)	
MD/DE SAF Creates Unique Memento .....	17
Allegheny SAF Executive Committee Minutes .....	18-22
Allegheny SAF General Business Minutes .....	22
Allegheny Summer Meeting Program .....	23
NJ SAF and the Lusscroft Farm .....	24
Penn State Mont Alto Reunion and Schatz Tree .....	25
Silviculture News .....	26
Coming Events .....	27
Allegheny SAF Committee Chairs .....	27
Allegheny SAF Chairs, Executive Committee and Division Chairs .....	28

## Cover Photo

The sugarbush house at the Lusscroft Farm gets an inspection by members of the New Jersey SAF Lusscroft Planning Group (see page 24 for full story)



## Chair's Corner

By Kim Steiner,  
Allegheny SAF Chair

Earlier this week, as I write this, we received from the national office a list of “dues-delinquent” members of ANSAF. I’m sure that I myself have been delinquent in the past, either because of cash flow problems or simple procrastination, but somehow I’ve managed to keep up my professional membership for 37 years without a lapse. Of course, one can practice forestry without belonging to SAF, but I’ve always felt an obligation to the organization that literally created – and sustains – the profession in which I teach and work. The direct, annual benefits of membership are icing on the cake. Many names on the current delinquent list represent familiar and valued members of ANSAF. I hope they stay with us!

This reminds me that we are transitioning rapidly to electronic communication, which is possible only through the email addresses provided by members with their annual renewals. Unfortunately, we have email addresses for only about 75 percent of our members! For the remaining 25 percent, you should be aware of the following important developments in electronic communication with our members:

- Beginning this year, the winter and summer issues of *The Allegheny News* will be distributed primarily electronically (see the minutes of February’s Executive Committee meeting in this issue). Members without email addresses will receive paper copies.
- Also beginning this year, all national (and possibly Allegheny) SAF elections and referenda will be conducted primarily by electronic ballot. Members without email addresses will receive paper ballots.
- ANSAF members with email addresses receive occasional notices of important events and upcoming meetings.
- The ANSAF now has a respectable web page ([www.alleghenysaf.org](http://www.alleghenysaf.org)), and I believe this will grow into an increasingly important resource for ANSAF members. Thanks to Webmaster Jack Perdue for his willingness to take on this project!

(continued on page 2)

(Continued from page 1)

- The E-Forester, a bi-weekly publication distributed by email, is available by free subscription through the national office. I find it as informative as the *Forestry Source* and almost as enjoyable as the Drudge Report.

If you are unsure whether SAF has a correct email address for you, go to their web site, [www.safnet.org](http://www.safnet.org), navigate to the Members Only >>> Directories page, and do a search on your name. Carol McKernon in the national office will update your information if it is incorrect. In the meantime, to help us out, please fill out Jack Perdue's Internet survey on page 15 in this issue!

Finally, I want to remind everyone that our biennial elections are coming up this fall. Please think a moment about this, and if you would like to advance yourself or someone else as a candidate, please contact the chair of our nominations committee, Ken Jolly. Ken's contact information is on page 28 of this issue of *The Allegheny News*. ❄

## New Stewardship Manager for Gordon Natural Area

Extracted from "Gordie News" Vol. 1:1, 2007

West Chester University (WCU) announces the approval of a one-year pilot program for a Stewardship Manager for the Gordon Natural Area (GNA). The Department of Biology has appointed Society of American Foresters member **Dr. Gerard Hertel**, Adjunct Professor for Forest Ecology and Entomology at WCU to fill the Steward Manager position.

The Gordon Natural Area is an ecological treasure island in a sea of development and is the last public land link to the woods that William Penn experienced in the late 1600s. It is a Certified Wildlife Habitat by the National Wildlife Federation. Gerry encourages all to consider how the GNA can be used as part of your educational experience, 610-436-2722 or [ghertel@wcupa.edu](mailto:ghertel@wcupa.edu).

Dr. Hertel retired in 2001 after working 34 years for the USDA Forest Service. He has an AS (Forestry) from Minot State University-Bottineau, BS (Forestry) from the University of Montana, a Masters (Forestry) from Duke University and a PhD (Entomology) from the University of Wisconsin-Madison. He has taught Dendrology and Entomology at WCU and has volunteered many hours in behalf of the GNA. ❄

## 2007 WV SAF Division Winter Meeting

By Mary Beth Adams, Chair, WV SAF Division

The West Virginia SAF Division held a joint meeting with the Forest Resources Association, and Forest Products Security Group at Pipestem State Park, Pipestem, WV on February 8-9, 2007. A large and enthusiastic audience of around 98 attendees learned about Forest Property Protection and Security, earning 7.5 Category 1 Continuing Forestry Education Credits (CFEs) for participation. Topics included timber theft and security, use of security cameras, preventing theft and vandalism, and excellent safety sessions on gas line safety, and meth-lab detection and precautions, among others. Kudos go to **Kirby Funderburk** for heading up the WVSAF portion of the planning team.

The WVSAF is embarking on a revitalization process, with the goal of reinvigorating the division and increasing participation among our approximately 200 members. **Barb Breshok** and **Bill Kidd** are heading up the revitalization team, which recently completed a survey of WVSAF members. The results of this survey will be used by the Executive Committee to help plan future meetings, and activities of the WVSAF.

In 2006, the WVSAF CFE Coordinator **Dave McGill** produced 58 CFE sheets for programs and activities that qualified for SAF CFE credits. Also in 2006, with a grant of \$800 from the WV SAF, WVU Forest management faculty conducted three "Meet the Faculty" seminars across West Virginia. These were both very successful for the faculty and were well attended and well received by the participating foresters and publics. Kudos again to **Dave McGill** for facilitating this important exchange!

The 2006 Reforestation Award will be presented to Black Castle Coal Company, for excellent work in reforestation of surface mined areas. The WVSAF cooperates with WV Division of Environmental Protection in presenting this award each year.

The WVSAF is collaborating with the Appalachian Forest Heritage Area in a Foresters' Fund proposal, submitted by **Dave McGill**. The proposed programs would include educational tours of four state forests within the Appalachian Heritage Area: Cooper's Rock, Kumbrabow (West Virginia), and Kindness Demonstration Area (Potomac-Garret State Forest) and Green Ridge in Maryland. ❄

## In Memoriam: Charles Hall, Alvin Allison and James Nichols



Charles Robert Hall, 92, of Horner, West Virginia passed away January 13, 2007 after an extended illness. He was a graduate of the "first ever" forestry class in 1939 from West Virginia University. His professional career began in 1948 as a District Forest Protector with the WV Conservation Commission, then in 1950 transferred to central WV as District Forester and remained there until 1977, when he accepted the position of WV Assistant State Forester in charge of fire protection. He retired from the WV Department of Natural Resources, Division of Forestry in 1979 after 31 years of service.

Hall was a Golden Member of the SAF, with 58 years of dedicated service to the profession and the society. An Executive Committee member of the WVU DOF Alumni Association, he was chosen as Outstanding Alumnus in 1983, and was inducted into the WV Agriculture and Forestry Hall of Fame in 2000. In 2003, he received the Distinguished Service Award from the WV Farm Bureau.

Charles was a WWII veteran, serving in the US Navy where he was awarded the WWII Victory and Asiatic-Pacific Area Campaign ribbons. He retired from the US Naval Reserves as a lieutenant. A devoted member of the Methodist Church, he taught Sunday school and was a lay speaker. He was also a

volunteer leader with the State 4-H Program and PTA.



Alvin Clark (Al) Allison, 85, of Charleston, West Virginia, died at home March 1, 2007. A graduate of Penn State University, in Forestry, Al retired as WV Assistant State Forester in charge of Reforestation and Forest Tree Production.

He was a Golden Member of the SAF (67 years), the WV Christmas Tree Growers, the Charleston CIVITAN Club, and FOOTMAD (Friends of Old Time Music and Dance) - Al loved to dance! He was active in Boy Scouts; many a scout was influenced not only by his knowledge, but by his mannerisms and story-telling.

Al served 67 years as an active member of the WV SAF Division, held several elected offices and chaired several technical committees connected with workshops and meetings - especially related to forest tree seedling production and mine spoil regeneration. He was an expert in tree seed collection, cleaning, storage, and the adaptation of agricultural machinery in quality forest tree seedling production.

A real people-person, over 200 professional peers and friends gathered for the celebration of his life service. A proud supporter of Penn State Mont Alto, he requested that donations to his memory be

made to Penn State Mont Alto, PA. He is survived by loving wife Roberta (Larew) Allison, four children, seven grandchildren and three great-grandchildren.



James O. Nichols, 77, of Dillsburg, Pennsylvania died Tuesday, March 6, 2007. He received a BS in Forestry and ME, majoring in Forest Entomology at the State University of New York College of Forestry at Syracuse. A distinguished career followed with the PA Department of Agriculture and the Bureau of Forestry as Forest Entomologist; he retired in 1986.

During the late 1950s and 1960s, Jim was responsible for initiating and directing the control of the Gypsy moth in Pennsylvania. His publication, "The Gypsy Moth in Pennsylvania", was his summary of that initial statewide control-strategy to protect the forest resource values from this introduced pest.

During the Korean War, Nichols flew as a fighter pilot in the US Air Force. He was a member of the Air Force Association, the Experimental Aircraft Association, and the local American Legion Post #26 and VFW Post #6771. As a long-time member of the Society of American Foresters, the Entomological Society of America and the PA Forestry Association, he was a dedicated professional. ✻

# Snow and Ice Postpone 20<sup>th</sup> Student Quiz Bowl

By Steve Resh, Allegheny SAF Student Quiz Bowl Coordinator

Did you ever hold a party and no one showed up? At this year's Allegheny SAF Winter meeting we didn't have a complete "no show" situation, but we were able to attract just one Student Quiz Bowl team which forced the move of the 20<sup>th</sup> quiz bowl to next year's Winter Meeting.

Six students from Penn State University were able to brave the ice and snowy conditions and make the trip to Hagerstown on Valentine's Day. Unfortunately, they were the only school who made the trip and as a teacher of 31 years, I found it impossible to declare a winner without first having a contest. The leadership of the Maryland/Delaware Division discussed various possibilities and eventually decided that they would put their professional reputations on the line in

the hopes that we could send a representative team of students to the national competition next fall in Portland.



MD/DE Division team vs. Penn State University in the Quiz Bowl

The Maryland team comprised of **Mike Huneke, Mike Kay and Jonathan Kays** came out of the starting gate at a full gallop and scored many points quickly. There are several possible ways to explain the burst of intelligence displayed by the "Old Line Team": one possibility put forward by members of the audience was that the first 10 questions contained so much forest history that only a team comprised of personal friends of Gifford Pinchot could have known the answers. Personally, I think the head judge should have shown the Penn State students how to work the signaling devices thus leveling the playing field somewhat.

In the end though, the team of two Mikes and two Kay(s) fell apart because of their unwillingness to work together as a team. Obviously, Joe Paterno had spent time building the Penn State Team to the point where no score imbalance could upset the game plan and they eventually were able to use their youth to capture victory. So we will have a team represent the Allegheny SAF in Portland and it will be wearing the blue and white of Penn State University, not the support hose and trusses of those old blue hairs from Maryland. That means that we can all show up to celebrate the 20<sup>th</sup> Quiz Bowl next year at the Allegheny Winter Meeting. ❄️

## ONE STOP SHOP.

### Northern-Grown Tree Seedlings

**Pine:** Austrian, Balkan, Japanese Black, Pinyon, Mugho, Ponderosa, Red, White, Virginia

**Spruce:** Black Hills, Blue, Engelman, Norway, Serbian, White

**Fir:** Balsam, Canaan, Concolor, Douglas, Fraser

**Hemlock:** Canadian

**Birch:** European, Japanese, Gray

**Dogwoods:** Chinese, Gray, Silky, Siberian, White

**Locust:** Black, Bristly, Honey

**Maples:** Norway, Red, Silver, Sugar

**Oaks:** Black, Bur, English, Pin, Scarlet, Sawtooth, Red, White, Swamp, Willow

**Button Bush, Catalpa, Cherry, Red Cedar, Ginkgo, Poplar, Sumac, Serviceberry, Viburnums**

1-800-643-8319 Dept. 85-D

seedlings  
transplants  
liners  
container  
b & b

75 years of growing.

Over 150 Varieties available.



KeyCode: 85F02

A complete list is available upon request.

**MUSSER**  
forests inc

Indiana, PA  
Phone 800/643-8319  
Fax: 724/465-9893  
wholesale@musserforests.com

www.musserforests.com

## The next newsletter deadline is June 15, 2007

Send articles in Microsoft Word format and photos as JPG files to Allegheny News editor Jack Winieski at [ansaf@verizon.net](mailto:ansaf@verizon.net)

## 2006 SAF District Fellows

*Election to Fellow in the Society of American Foresters (SAF) is the highest form of recognition from one's peers. The Fellow Award is limited to less than 5% of the National SAF membership. Five Allegheny SAF members were peer-elected in 2006.*

**Mary Ann Fajvan** is Research Forester, Quantitative Silviculturist, USDA Forest Service, and Northeastern Research Station at Morgantown, West Virginia. She is also an Adjunct Associate Professor of Forest Management in the Division of Forestry at West Virginia University (WVU).



SAF Fellow Mary Ann Fajvan

Prior to her present position, Fajvan was Associate Professor of Forestry at WVU from 1992–2004; Teaching/Research Assistant, College of Forest Resources, Univ. of Maine; Instructor, Forest Resources Extension, Penn State Univ.; and Research Assistant, Yale School of Forestry and Environmental Studies. She holds a BS in Natural Resources Management, Cook College, Rutgers Univ., MFS Silviculture, Yale School of Forestry, and PhD Quantitative Silviculture, College of Forest Resources, Univ. of Maine.

A member of SAF since 1977, Fajvan serves as Chair of the National Science Fund Sub-Committee of National SAF, having initiated the photo competition fund raising event at National Conventions. She has served as Chair and Secretary of that SAF Working Group, and was a member of the steering committee for the first SAF Leadership Academy. She is also a member of the Allegheny SAF Executive Committee and serves as the unit's Forest Science Coordinator, initiating the "Silviculture News" series in the quarterly newsletter, *The Allegheny News*. She has served as the WV Division Faculty Advisor of the SAF WVU Student Chapter.

Fajvan, "has been a leader in the new generation of Silviculture researchers, with a deep understanding of stand structure in mixed hardwood stands; (her) research activities shed light on the challenges of sustainability through education, research and technology transfer." Her peer-reviewed publications over a respected professional career are numerous and represent her

active participation in lectures and technical presentations at invited workshops, conferences and in university classrooms.

Honors and awards include induction into the Alpha Zeta Agricultural Honor and Sigma Xi Scientific Research Societies, and having received the Harvard University Charles Bullard Fellowship in Forest Research. She holds, and has held, membership in: Ecological Soc. of America; WV Forestry, and Woodland Owners Associations; National Woodland Owners Assoc.; and the Association of Temperate Agroforestry.

**Charles Joseph Newlon** is a self-employed Forestry Education Consultant in Hamilton, New Jersey, having retired as USFS Liaison for R9 National Forests with 20 NE State Foresters in 1992. Since retirement he has held positions as Adjunct Forestry Professor, Delaware State University, and Arboriculture Instructor, Williamson School for Trades (Jr. College).

While in the US Forest Service, Newlon held USFS positions: Director of Public Affairs, Northern Region; Group Leader, Public Involvement, Washington Office; Public Affairs Specialist for the News Media Region #1, Missoula, MT and PNW Research Station, Portland, OR. Early in his career, Newlon served as a District Service Forester, and Marketing and Utilization Forester with the Colorado State Forest Service in Ft. Collins, CO.

Newlon holds a BS, Wood Utilization, and Forest Management Minor, Colorado State Univ. (Colo A&M) 1956. He has been an SAF member since 1957 and is Certified



SAF Fellow Charlie Newlon

Forester #1102 in the SAF voluntary certification program. During the Korean War, he served as Airman, Photographer in the USAF from 19951–52.

Very active in SAF at all levels, Newlon has participated in 19 National SAF Conventions, being a member of the National Convention Arrangements Committees in 1964 and 1975, and Chair of the

*(Continued on page 6)*

(Continued from page 5)

National Education and Communication Working Group, 1973-75. Presently he is Allegheny SAF (ANSAF) "Reginald Forbes Art Show" Chair, and NJ Division Education Committee member. At the 2005 ANSAF Winter Meeting he was the Silent Auction Manager as well as the Reginald Forbes Art Contest Supervisor. He was a member of the ANSAF Diversity Committee, and Chair of the Ed. & Comm. Committee; Chair of the National Capital and Central Rocky Mt. Sections as well as holding several other offices in those SAF sections. At the Chapter level, Newlon has served as SAF Valley Forge and SE Wisconsin Chapter Chairs.

An excellent photographer and communications specialist, Newlon has written and presented as host, 85 forestry "CSU Outdoors" television shows on Channel 9, ABC-TV Denver, CO, and "New in Forestry Research" five minute public service radio shows on 43 stations in OR, WA, and AK; and chaired the "Keep America Beautiful National Advisory Council" composed of 20 federal agencies, and 50 environmental, youth and industry organizations. From 2000 until the present, he is Manager/Moderator, Annual Urban Forestry, joint SAF-VF Chapter, ISA, DSU, SARE Seminars, Wilmington, DE.

Presently, Newlon is a member and/or officer of: NJ and American For. Assns., Forest History Soc., Int. Soc. of Arboriculture, DSU C. E. Philips Herbarium and Wilmington, DE Integrated Vegetation Management, Inc. He is writer/editor/photographer, NJ Forest Stewardship Newsletter, a DE and PA Project Learning Tree Facilitator, a DE Envirothon coach and FFA Forestry Contest Co-Chair. Awards include a USFS Civil Rights Excellence Certificate, Certificates of Appreciation from the office of USDA Sec. of Agriculture and USFS - Washington Office.

**Michael Bruce Lester** is an Assistant State Forester in the Pennsylvania DCNR, Bureau of Forestry in Harrisburg, PA since 1999. Previously he held positions in Proctor and Gamble Paper Company, Mehoopany, PA as Finance, Contractor, Wood Supply District and Area Managers. Earlier in his career, he was a Westvaco Corp. Intern, partner in Caridi, Lester & Fredin Forestry Services, and Ranger with the Colorado Div. of State Parks.

Lester has an MBA, State University of NY, Binghamton; MF, Duke University; and a BS in Forestry, Colorado State University. He is a Certified Forester in the SAF voluntary program, has actively participated in 15 National SAF Conventions, Chaired the House of Society Delegates in 2002 and the Leadership Academy

2004-05, and was SAF Council representative for Dist. VII (Allegheny and National Capital Societies).

Lester chaired the Allegheny Society (ANSAF) 2000-01, Chaired the 1997 (75<sup>th</sup> Anniversary) Annual Winter Meeting, 1997, and served as Allegheny's Science Coordinator and Forest Health and Productivity Committee member. He was Pinchot Chapter Chair in Pennsylvania, and Alpha Student Chapter Chair at Colorado State University.

Throughout his career, in addition to his professional leadership in the application of forestry and public policy through his various positions, Lester has been instrumental

in the formation of partnerships leading to innovative collaboration between Proctor & Gamble and the Audubon Society, and at the State level among conservation groups and industry. He serves on the Board of Directors, Hardwood Forestry Fund, Chesapeake Bay Resource Lands Assessment Task Force, DCNR Ecosystem Management Advisory and Silviculture/Timber/Advisory Committees, and PA Tree Farm Committees.



SAF Fellow Mike Lester

Lester has co-authored seven refereed publications, including *The Impact of Logging on Wildlife*, *The Abundance and Species Richness of Herpetofauna in Forest Stand in Pennsylvania*, and made numerous presentations on forestry issues. Awards and recognitions include: 2001 PA DCNR Secretary's Award for Excellence, 1999 Tree Farm Leadership Award, and recognized as a Union Camp Fellow in 1987 and Robert L. Smith Fellowship in 1987.

**Stephen B. Horsley** is currently Research Physiologist with the USDA Forest Service, Northern Research Station in Irvine, Pennsylvania. Previous positions include positions as Research Physiologists, NE-4152, Warren, PA and NE-1651, Pennington, NJ. He has a BS in Forestry, Penn State Univ., and MS and PhD, Forest Ecology and Plant Physiology respectively, Univ. of Massachusetts.

Throughout his career, he has made substantial contributions in three separate areas of science and sustainable forest management. His early work identified



the mechanism by which the native hay-scented fern interfered with the establishment and growth of natural regeneration, and developed safe and effective ways to combat this interference. This led to work on the effect of white-tailed deer on forest vegetation dynamics.



SAF Fellow Steve Horsley

In the third stage of his career he formed and led a team that continues to work on the range-wide issue of sugar maple decline.

Horsley has published more than 50 research papers, given innumerable university seminars and class presentations, and worked with land and resource managers throughout Pennsylvania – contributions which have served as the basis of productive work by other scientists, changing and adapting forest practices and policies.

A member of SAF since 1964, he has filled leadership roles at all national and local levels of the Society, serving as associate editor of *Forest Science*, and is presently associate editor of the *Canadian Journal of Forest Research*. He is on the adjunct faculties of the State University of New York, College of Environmental Science and Forestry and the Pennsylvania State University, and has served as adjunct faculty at the Swedish University of Agricultural Science in Umea.

Horsley served as Secretary and Chair of the National SAF Physiology Working Group from 1995-2000. He has planned many of the Allegheny Section meetings, including the summer meetings of 1992 and 1996 and Chaired the Plateau Chapter of the Pennsylvania Division, 1975.

He is in the National Forestry Honor Societies, Xi Sigma Pi, Sigma Xi and Alpha Zeta, and the Coaly Society (Penn State Agricultural Honor Society). Three USDA superior Service Awards have been presented to Horsley, 1991, 1979, and 1978.

**Kenneth W. Jolly** is Associate Director, Maryland Department of Natural Resources-Forest Service in Annapolis, MD. Previous positions include: MD Associate Director, and Supervisor, Public Land Stewardship, Annapolis: DNR-FS; Regional Forester, Bowie, MD; Project Forester, Prince Frederick, MD; and

Forster, Forest Development Corp. of Honduras/US Peace Corps.

He has a BS, Forest Management, North Carolina State, and MS, Organizational Management, University of Maryland, and hold Licensed Forster #338 in the State of Maryland.

Jolly has attended and participated in many capacities at nine SAF National Conventions and attended the SAF Leadership Academy in 1998. At the National level in 2006, he was Vice-Chair, House of Society Delegates (HSD), Convener and Delegate in 2005-04; National Convention Planning Committee, Western MD Centennial Technical Field Workshop Coordinator, and National Convention Student Technical Field Workshop Coordinator, 2000.

Jolly Chaired the Allegheny SAF, 2004-05 and served as Secretary/Treasurer, 2000-2003; served on the Executive and Awards Committees; and served on the 1994, 1996, 1999, 2004 Allegheny Section Meeting Planning Committees. In the MD/DE Division, he was an "ex officio" member of the Executive Committee, Secretary, Member-at-large, and Newsletter Editor, and served on MD/DE Meeting Planning Committees, 1988-2006.

He conducted programmatic/administrative oversight of MD-FS operations personnel and development of policy/operational goals to achieve priority statewide objectives, 2001-2006; involved in a substantive revision of MD State Timber Sale Policy; development of MD/FS Strategic Plan; first SFI and FSC Forest Certification on MD public forest lands (Chesapeake forest, 2003); and



SAF Fellow Ken Jolly

involved in the first MD-FS/US Navy and US Air Force forest management Cooperative Agreements.

Awards received include the 1992 MD Forester of the Year and 1998 MD Southern Region Forester of the Year, and Peace Corps Recognition Award, 1984. Jolly is a member of the MD Forest Association and MD Forest Service Liaison to the MD Tree Farm Committee. He has received the Recognition and Appreciation Award, Calvert County Public Schools, 1991. ❁

## 2006 Allegheny SAF Awards

by Howard Wurzbacher, ANSAF Awards Chair\*

Each year at the annual winter meeting of the Allegheny Society of American Foresters, two awards are presented with great honor to individuals of the organization. The first is the *Forester of the Year* award, which recognizes professional performance in the previous calendar year, or a specific and notable achievement within 2006, along with promotion of the importance of professional forestry and a high caliber of professional conduct. The second annual award is the *Robert W. Bauer Outstanding Service to Forestry* award, in recognition of outstanding professional achievements in forestry over a career time span, a high caliber of professional conduct, outstanding promotion of forest conservation and service to the Society of American Foresters and local community organizations.

At the 2006 Allegheny SAF winter meeting awards banquet in Hagerstown, MD, two individuals from among our membership were recognized for their exemplary conduct and dedication to the Society of American Foresters and to the forestry profession.

The recipient of the 2006 Allegheny SAF Forester of the Year Award is Ken Roberts of the MD/DE Division. Ken graduated from Paul Smiths College with a degree in Forest Technology in 1979, a BS in Forestry from the University of Massachusetts in 1982, and subsequently with an MBA from Frostburg State in 1991. He began his employment with Westvaco in 1982, and then

transferred to Westvaco's Forest Management landowner assistance program in 1983. In 1991, he transferred to the Wood Procurement Department, where he is currently a Senior Procurement Forester with the Luke Mill. His responsibilities include working with landowners and loggers to provide the mill with a sustainable



Ken Roberts displays his 2006 Allegheny SAF Forester of the Year Award

supply of wood fiber using environmentally responsible practices. He is admired for his professionalism, down-to-earth attitude, and willingness to work with others to achieve this goal.

Ken's professional activities include working on the Pennsylvania Sustainable Forestry Initiative committee and Logger Training committee. He also serves on the Green Ridge Advisory Board, the Allegheny County Forestry Board, the Maryland Tree Farm Committee, and the Maryland Stewardship Committee. He recently served as the team leader for the Sustainable Forestry audit of the New Page Luke Mill. He was instrumental in developing the New Page corporate SFI policy, and the Luke mill policy and processes for compliance. He has been a member of SAF since 1982, and is an SAF Certified Forester.

The Robert W. Bauer Outstanding Service to Forestry Award for 2006 was presented to Duane Green, of the Pennsylvania SAF Valley Forge Chapter. Duane is an individual who truly exemplifies the spirit of our Allegheny Awards. It is challenging to condense Duane's many achievements, activities, and service to our profession into a brief synopsis of what is an outstanding career. Duane is a veteran of the United States Marine Corps, having served from 1945-1948. He was a member of three polar expeditions, to the Arctic in 1946 & 1947, and the Antarctic in 1947-48.

His educational background includes a BS in Forestry from Iowa State University in 1953, and a MS in Forestry from Michigan State University in 1973. His employment experience includes Service Forester and Assistant State Forester positions for the North Dakota State Forest Service from 1954-1967. He was employed by the U. S. Forest Service, State and Private Forestry, in varying positions from 1967-1989, in Minneapolis/St. Paul, MN; Washington, DC; Portland OR, including Mt. St. Helens volcano work; and Broomall, PA, where he retired from the U.S. Forest Service as Deputy Director for State & Private Forestry for the Northeastern Area. Since that time, he has worked as a self-employed consulting forester in southeastern Pennsylvania and Delaware, and has collaborated in hazard tree surveys and native forest restoration plans for several parks within that area.

Duane is a co-author and publisher of Mid-Atlantic Trees and Shrubs for Living, Wildlife and Conservation, and has presented numerous programs and lectures, including as an Adjunct Professor at the



Duane Green (right) receives his Robert W. Bauer Outstanding Service to Forestry award from Awards Chair Howard Wurzbacher

University of Delaware, and Delaware State University. He has served SAF as Program Chair for the Valley Forge Chapter, and has Co-Chaired the Planning Committee for the Summer Allegheny Section meeting. He has sung in the choir and taught Sunday school at Grove Methodist Church. I think that it's appropriate to summarize Duane's biography in his own words: "There's probably some more, but it's lost in time and space. It has still been a grand 50-plus years in our forests and with lots of good people. All told, in my 50 years of professional forestry work, all I ever wanted was to be a good, solid, field forester." ❄

*Note from the author:*

*I thank the members of the Awards Committee, as well as the Division and Chapter Chairs who submitted nominations for consideration for this year's awards. The members who serve on the Awards Committee review the information submitted for each nomination, and vote their selection for the recipient of each award. These committee members serve individually and anonymously; their service to the Society in this role is appreciated. I will also offer thanks to those in the leadership of the Allegheny who submitted nominations for this year's awards.*

**"I got into this business because the tree protectors my customer was using killed over half his trees."**

Tom Mills  
Tree Pro President



"So I started designing and testing my own protectors. Eventually, I came up with a design that did the job it was supposed to.

"There are just too many variables that affect tree health and growth to rely on guesswork. To truly know what works, you must exhaustively test each product.

"That same philosophy applies to all our products: time-release fertilizer, root dip, inoculants, soil softening agents, weed mats, etc.


**Choose tree enhancement products with the same care you choose your trees.**

"Planting trees can be a huge investment in time, money and effort. To not protect them from deer and other animals, to not give them the best start you possibly can, is to throw caution to the wind."

Ask about our \$99 Plantation Starter Kit, which includes 10 GSP black walnut trees along with all the thoroughly tested tree enhancement products you need to get started.

**Tree Pro**


3180 West 250 North  
West Lafayette, IN 47906  
800-875-8071  
www.treepro.com  
sales@treepro.com



**BETTER FOREST CONSULTING SERVICES**  
**EDGAR H. PALPANT, CF**  
Consulting Forester

*"If a better system is thine, impart it; if not, make use of mine." Horace (965-8BC)*

Operations:  
Mc Alevys Fort, PA



4388 Peachey Road  
Petersburg, PA 16669  
Phone: (814) 667-5088  
Fax: (814) 667-5089  
E-mail: ehpal@cs.com

**BETTER TREES - THROUGH BETTER SEED - THROUGH RESEARCH**  
*Specializing in Christmas Tree Management*

## Casey's Forestry Concepts

"A New Kind of Consulting"

**Income Tax Reduction • Conservation Education**  
**Restructuring Plans to Reduce Tax • Ordinance Development**

Lloyd R. Casey  
1263 Palomino Drive  
West Chester, PA 19380

Phone: 610-436-9424  
email: lrcasey@comcast.net

# 75 Foresters Attend Hagerstown SAF Winter Meeting

By Mike Huneke, Chair, SAF Maryland Delaware Division

On February 13-15, 2007, more than 75 members of the Allegheny SAF gathered in Hagerstown, Maryland to discuss the sustainability of our forest resources, the industry and the forestry profession. The meeting fostered thoughtful discussion about the need for a national and local policy on sustainability, and the challenges with delivering this policy. The Maryland Delaware Division would like to thank **PEPCO Holdings, MarLen Forestry, the Glatfelter Pulp Wood Company and New Page** for their generous contributions to this meeting.

Maryland Delaware Division Chair **Mike Huneke** opened the meeting with a brief discussion about the meaning of sustainability to set the stage for the meeting. Mike Huneke moderated the first panel of speakers who discussed issues pertaining to sustaining the forestry resource. **Austin Short**, the Delaware State Forester, followed with a discussion about regional considerations and challenges to be addressed if forestry is to remain viable in the local economy. Keynote Speaker **Michael Goergen**, SAF's Executive Vice President and CEO offered his thoughts on the need for a national policy on sustainability and progress being made at the national level by the SAF's Sustainability Task Force.

**Peter Miller** moderated the second panel of speakers who discussed issues pertaining to sustaining the forestry industry, locally and nationally. **Richard Lewis**, President of the Forest Resources Association discussed future wood fiber supply challenges, and how overseas



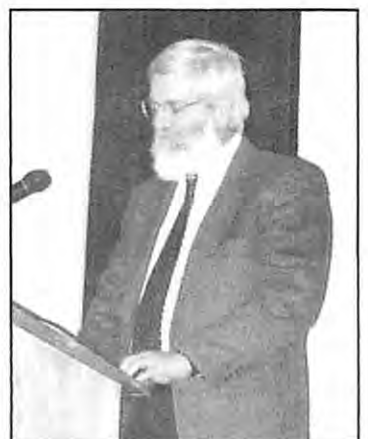
Ken Jolly (right) presents a gavel made from the Maryland Wye Oak to Kurt Gottschalk (left)

competitors are impacting the wood fiber market. **John Forman**, of Wood Products, Inc. in Oakland, Maryland followed with a presentation about recent trends in the local red oak market, and his perspective on how to sustain local industry.

Following lunch, DNR Forest Service Director and Maryland State Forester **Steve Koehn** discussed forest loss associated with the urbanization of Maryland and the need for a statewide plan to sustain forests to provide ecological services for

future generations. This second panel concluded with a presentation from **Chris Zinkhan**, Managing Director of the Forestland Group, on the future trends for TIMOs and REITs.

Following the afternoon break, **Steve Resh** moderated the third panel, which focused on issues pertaining to sustaining the forestry profession. **Terrance Clark**, SAF's Associate Director of Science and Education, led this panel with a presentation about the standard for accreditation of forestry programs at our schools and universities. **Wade Dorsey**, of the Maryland DNR Forest Service, concluded the afternoon speaker program with a presentation about the Certified Forester Program and how it relates to maintaining forestry's professional standard. All remaining speakers were invited to participate in a brief panel discussion to answer questions of the day. During this panel discussion, State Forester Steve Koehn provided an



update on Maryland's efforts to eradicate the emerald ash borer.

Due to adverse weather conditions, Penn State was the only team to attend the Student Quiz Bowl competition, however they were not crowned champions until they handily defeated two alumni teams. The day's program concluded with the Annual Awards Banquet featuring an outstanding presentation from **Don Cooper**, a National Geographic wildlife photographer from Sharpsburg, Maryland.

Thursday morning began with an inspirational Chairman's Breakfast led by **Richard McGough**, the Minister of the Hagerstown Church of Christ. The Allegheny Business and Pennsylvania Division Meetings followed the breakfast. **Jonathan Kays** moderated the



fourth panel, which featured presentations about the "good news" for sustainability. **David Curson**, Director of Bird Conservation for the MD/DE Audubon Society, discussed important bird areas and how sustainable scientific forest management can help meet critical habitat needs for Forest Interior Dwelling Bird species. **Dan Heddrick** of the Maryland DNR Forest Service then gave a presentation about his research with the Small Woodlot Initiative, which is exploring the economic viability of small woodlot harvesting. **Jonathan Kays** of the Maryland Cooperative Extension Service followed with a presentation about different ways landowners can manage small woodlots and the Extension Service's new publication for landowners entitled "The Woods in Your Backyard." **Albert Todd**, Watershed Program Leader for the Northeastern Area of the USDA Forest Service, followed with an

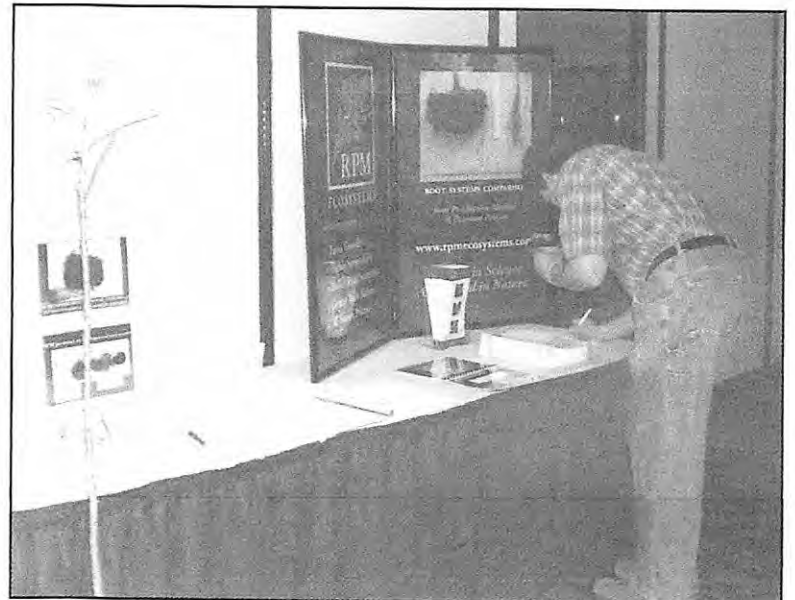
informative discussion about the state of the Chesapeake Forests. The program concluded with a "wrap-up" by Maryland State Forester **Steve Koehn** who challenged all of us who are leaders in forestry to promote the importance of the sustainability of our forest resources.



During the meeting, a 50/50 raffle generated \$151 for the Allegheny Society, and the Foresters Fund silent auction raised \$439. The Maryland Delaware Division would like to thank all of the attendees, sponsors and exhibitors\* for participating in this meeting, and it is our hope that the meeting causes you to pursue some of the issues presented. ❁

\*Thank you to these fine exhibitors:

Firewise/Wildland Urban Fire Interface  
Maryland Forests Association, Inc.  
Penn State University, School of Forest Resources  
RPM Ecosystems, LLC & RPM Fast Growing Trees  
Walnut Council, Maryland Chapter  
Western Maryland Resources Conservation and Development Council (RC&D)



# Allegheny SAF Winter Meeting Photo Highlights

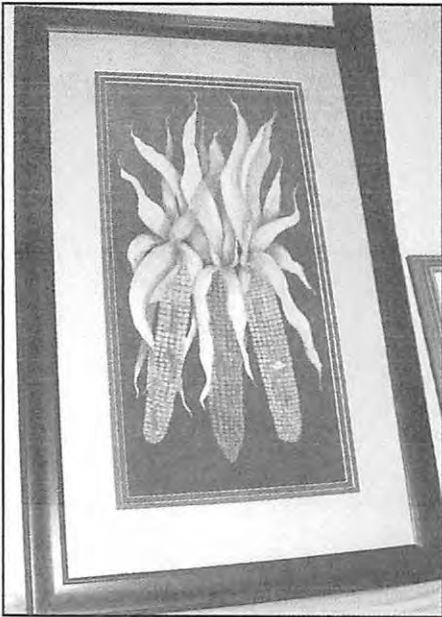
Photos compliments of Charlie Newlon and Jack Winieski



# Allegheny SAF Winter Meeting Photo Highlights



# Reginald Forbes Art Show Winners



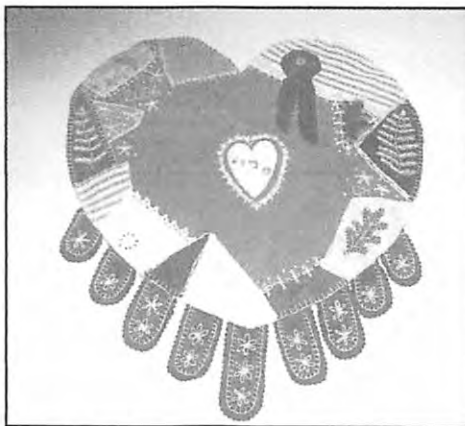
"Autumn Reward"  
By Marilyn Hennion  
Grand Prize and First Place  
Open Class—Flat Art (Watercolor)



"The Elegant Egg"  
By Marilyn Hennion  
Second Place  
Open Class—Flat Art (Watercolor)



"Provincetown—Cape Cod"  
By Bridget Galway  
Third Place  
Open Class—Flat Art (Mixed Media)

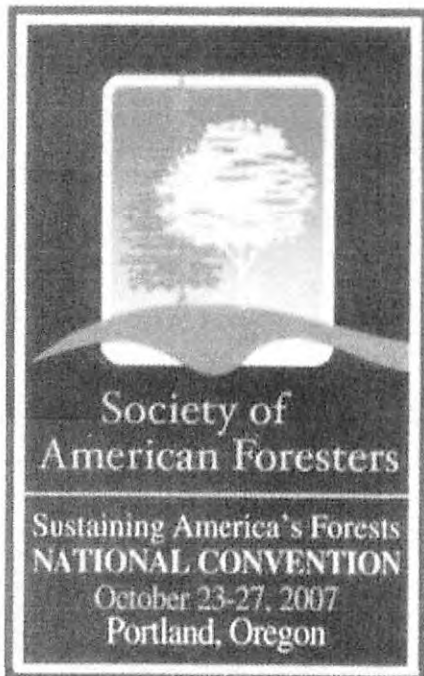


Folk Art—Crazy Quilt Heart  
By Chrissy Harrigan  
First Place  
Open Class—Three Dimensional



"Ice Drops"  
By David Miller  
First Place  
Open Class—Photo Art

Photos by Reginald Forbes Art Contest Chair and Allegheny SAF 'Artistic Director' Charlie Newlon





# Allegheny SAF Internet Use Survey

Name: \_\_\_\_\_

Company/Agency: \_\_\_\_\_

Work Phone: \_\_\_\_\_

SAF Division/Chapter: \_\_\_\_\_

Home Phone \_\_\_\_\_

Email Address (for SAF contact): \_\_\_\_\_

Do you have access to the Internet from your home? Y / N

Do you have access to the Internet from your work? Y / N

How often do you check your email? (check one)

\_\_\_\_\_ at least once a day    \_\_\_\_\_ at least once a week    \_\_\_\_\_ almost never    \_\_\_\_\_ never

What is the best connection do you have to the Internet at work?

\_\_\_\_\_ None

\_\_\_\_\_ Fiber Optics

\_\_\_\_\_ Dial-up

\_\_\_\_\_ T1 or better (fast)

\_\_\_\_\_ Broadband (DSL or Digital Cable)

What best connection do you have to the Internet at home?

\_\_\_\_\_ None

\_\_\_\_\_ Fiber Optics

\_\_\_\_\_ Dial-up

\_\_\_\_\_ T1 or better (fast)

\_\_\_\_\_ Broadband (DSL or Digital Cable)

With Allegheny SAF budgets being a concern nearly every year, the solution often has been the question of how many copies of *The Allegheny News* will be issued during the year. Some years we have published only three copies. We have experimented with digital text-only copies in the past, and in Summer 2006 an Adobe PDF copy was issued online, as well as a mailed photocopy of the finished newsletter. The question is, how do you feel about the printed issues versus digital issues? This is a question of balance between budget/finances and readability/access.

## Format (Check only one)

What are your feelings regarding a digital copy of *The Allegheny News*?

\_\_\_\_\_ ALL DIGITAL: If it saves money for our Division, then do all digital issues.

\_\_\_\_\_ COMBINED FORMATS: I like the printed issue, but understand the need to save money, so do a combination of printed and digital issues.

\_\_\_\_\_ ALL PRINTED: I like only the printed issues.

\_\_\_\_\_ NO ISSUES: Don't do either printed or digital issues.

## Access (check all that would be acceptable)

If some or all issues of *The Allegheny News* were to be issued in digital format, in what format(s) would you prefer them, and how would you prefer to receive them?

\_\_\_\_\_ Text only via an email (small file sent to your email address).

\_\_\_\_\_ Text only on Allegheny website (you access at your convenience).

\_\_\_\_\_ Adobe PDF with notification of availability via email (digital copy looking exactly like a printed copy available on the internet).

\_\_\_\_\_ Adobe PDF available on the Allegheny SAF website.

Please complete this survey, cut out of newsletter, fold on fold lines (on opposite page), affix appropriate postage to this self-mailer and place in mailbox, or email your answers to [jackperdue@msn.com](mailto:jackperdue@msn.com)

# Maryland/Delaware SAF Creates a Unique Memento

By Steve Resh, Allegany College of Maryland, sresh@allegany.edu

In 1906, John and Robert Garrett heirs to the B&O Railroad Fortune, donated 2000 acres of land to the State of Maryland (MD) stipulating that "scientific forest management" be practiced on the property. This donated land later became a part of the Garrett State Forest and this generous act was responsible for the birth of forest management in the state. Very shortly, the MD legislature approved funding to create the position of State Forester and Fred Besley was hired. Scientific forest management became a reality in Maryland.

In 2006, the Maryland/Delaware Division of the Society of American Foresters decided that the 100<sup>th</sup> anniversary of the start of forest management in Maryland should be celebrated by the creation of a suitable memento. The Division wanted to create something that conveyed their sentiment that the Maryland State Forest Service had indeed managed the forest well and that the citizens of MD because of this good management have gained many benefits.

The current manager of Garrett State Forest, John Denning, was conducting a timber sale on land that was a part of the original donation. Wood Products Inc., a hardwood sawmill from Oakland, MD had purchased the logs and mill forester John Forman agreed to give 500 board feet of this historical oak lumber to the Chapter. Mr. John Martin's wood shop class at the Backbone Mt. Youth Center and Mr. Loren Bowser's Building and Construction Trades class at Southern Garrett High School, both located in Oakland, were able to donate the glue-up and routing of the lumber into 12x12-inch board foot plaques.

The Executive Committee of the Maryland/Delaware Division wanted the story of the donation told but also wanted to demonstrate the success that good forest management can achieve. To that end, they decided to have the plaques inscribed with the following two paragraphs:



*This board foot of lumber was sawn from a tree grown within the Garrett State Forest on a tract of land donated by John and Robert Garrett to the State of Maryland. The Brothers stipulated that "scientific management" be practiced. The 1906 donation marks the beginning of our State Forests as well as the Maryland Forest Service.*

*Thanks to scientific forest management, the State Forests of Maryland produce more than 77 of these board feet every minute of every year. This raw material helps support our wood products industry while at the same time provide recreational opportunities, wildlife habitat, open space and clean water to the citizens and visitors of the State.*

The Division members felt that the message contained on the Board Foot Plaque would be most appropriately shared with the State lawmakers of Maryland. To that end, a committee was appointed to visit each of the 188 lawmaker's offices in Annapolis and hand them a plaque along with the story of its creation and a list of our legislative concerns. The gift was very well received by the Senators and Delegates who seemed to understand and appreciate the message. Maryland is becoming a very urban state, but even those lawmakers who represent the most populous areas sent letters of appreciation that offered their continued support to all the values which good forest management provides.

If anyone would like to purchase one of these great keepsakes, please notify the author so that one may be reserved for you. The price will be \$10 each plus shipping. Members of the Division will also bring plaques to future SAF meetings for display and sale.



## **Allegheny Society of American Foresters Executive Committee Meeting Minutes of February 13, 2007**

### **Attendees:**

Allegheny Officers: K. Steiner, Chair; K. Gottschalk, V. Chair; K. Jolly, Imm. Past Chair; R. Billingham, Sec/Treas; R. Siefert, H. Wurzbacher, N. Karger, M Fajvan, M. Vodak, Exec. Comm. Members; J. Winieski, Exec Dir.; S. Resh, Quiz Bowl Coordinator; Division/Chapter Officers & Committee Representatives: M. Huneke, MD/DE Chair; B. Elison, PA Div. Chair; D. Miller, Past PA Div. Chair; F. Hennion, NJ Div. Chair; A. Ayers, Plateau Chpt. V. Chair; J. Stuffle, Valley Forge Chpt. V. Chair; M. Webb, Education Chair; J. Perdue, Webmaster

**Welcome and Introductions (K. Steiner)** – Many thanks to the chapters and divisions for their contributions to pay for 2006 National Convention entertainment. Steiner suggests that in the future, the national office should give the local people a budget and make sure that local sponsors have a reason to participate. We received many kudos from various entities on our handling of the National Convention.

### **Minutes from Previous Executive Committee Meeting:**

No discussion, approved as published in the Allegheny News. The motion to pass was made by M. Webb, seconded by R. Seifert.

### **Treasurer's Reports (R. Billingham):**

The 2006 Treasurer's Report and the current Treasurer's report were reviewed and approved. The motion to accept report was made by M. Webb, seconded by F. Hennion. The 2006 report indicated that we incurred a deficit of \$1,067.41. We had approved deficit spending for 2006 due to the National Convention. In fact, had we not spent money on the National Convention, we would have made a profit of \$15.66. The current balances: Checking: \$24,719.64; Endowment Savings: \$48,367.46 (of which \$5,248.48 are liquid and available for educational projects). Billingham will set up the Vanguard account during this year.

### **Auditing Committee**

R. Sheay and G. Pierson completed the annual audit of the books. Everything looks good.

### **HSD Report (K. Jolly):**

Jolly gave a brief explanation of the House of Society Delegates (HSD), which consists of 33 chairmen of state and multi state societies plus vice chairmen. It has a grassroots type of function, as opposed to SAF Council, which has only 10 members. HSD does not make any decisions, but makes recommendations to Council, which then makes decisions for the SAF. At this year's meeting, HSD heard from Charlene Schildwachter, who is the marketing expert at the SAF National Office, on recommendations pertaining to making membership in SAF a more friendly experience. The following are the recommendations and whether ANSAF supported these recommendations or not. Council will take action on these items in March.

1. Change membership categories to only Member and Student. This brought discussion as to what happens to the technician class of membership. The National Office will take care of this at an unseen level. The group also discussed the idea that we need to be careful that SAF remains a professional society; therefore, we need to remain specific on credentials necessary to be a member. After discussion, ANSAF voted to support this proposal.
2. Proposal to allow all members at all levels to vote. Currently, 10% of members have no right to vote, 5% can only vote locally (incidentally, only 38% vote in a regular election). The hope is that this change will allow all members to feel more included. ANSAF voted to support this proposal.
3. Proposal to abolish the sliding scale dues and move to a flat fee of \$133 regular member, \$105 retired member, and \$35 student member (this would include an internal "new professional" rate of \$85). ANSAF voted to support this proposal.
4. Proposal that student membership years be counted in total years of membership. ANSAF voted to support this proposal.
5. Proposal that the Golden Members program should continue (free dues after 50 years of membership) but that Golden Members should pay \$25 per year for the JOF, so that National can cover the cost of printing. Note that Golden Members are currently about 12% of membership – this percentage increases a bit each year (ANSAF has six new Golden Members this year). ANSAF voted to support this proposal.
6. Proposal to abolish endorsement of new members. Many people may not know anyone to endorse them, and National generally endorses those that come in without endorsement. ANSAF voted to support this proposal (this was already approved by Council in October).
7. Proposal to create one local unit fee for new members ONLY on application. This flat fee of \$20 would make a

person a member of their state society, division, and chapter. This would be for the first year; the next year, the dues would be adjusted to whatever the proper local rates are. ANSAF voted to support this proposal with the following caveats: that students not be charged this fee, and that the first year dues of \$20 would go to ANSAF and not filter down to the divisions/chapters until the following year.

**OTHER ISSUES DISCUSSED AT HSD:** HSD recommended to Council that the national student congress chair should remain a member of HSD. Council approved this. HSD recommended that the student chair make a report at the meeting. HSD recommended that other delegates to HSD be able to run for the chair position to provide some experience in leadership. HSD asked Council to review sustainable business programs. HSD gave a briefing on the Farm Bill and the National Sustainability Task force, as well as an update on the PLT conference. There was a discussion regarding CFE credits, which are currently not being allocated uniformly to the same meetings. The current problems in the tracking system have caused some states to avoid using CFEs as a state credentialing system. In the future, CFEs may all be done nationally. There is a task force currently investigating this situation as well as tackling the question of how to make sure that people actually attend the educational sessions they say that they did. Finally, the National Office is in the process of completing a local unit assessment to find out which local chapters are active.

#### **Executive Director Report (J. Winieski):**

Winieski continues to maintain the office. He is having difficulty seeking out articles for the newsletter, and continues to send reminders to people that have agreed to write articles. We need to make sure that our ANSAF committees become active and stay active. Committees won't take themselves seriously unless the ANSAF takes the committee seriously. Winieski's email has changed to [ansaf@verizon.net](mailto:ansaf@verizon.net). He will be out of the office Feb. 26- Mar. 7. Contact K. Steiner, K. Gottschalk, or R. Billingham for assistance during that time. The deadline for next newsletter is March 15. Winieski is always looking for articles. There is a concern that the bulk mailing may not be reaching people in time for meeting notices. Some of this issue is knowing that the newsletter is backup for other methods of communication.

#### **Committee Reports:**

**Awards (H. Wurzbacher):** Nominations were received and awardees were selected. Both awardees will attend the banquet. Please respond to the call for nominations. We have many excellent and deserving people in ANSAF and they are not being nominated. Wurzbacher did use the new procedure for field forester of the year. This went well last year. The target date for receipt of nominations will be in April.

**CFE Coordinator (M. Vodak):** National is in the process of writing a new manual for the CFE standards, as discussed earlier. It looks like eventually all requests will go through the National Office. He will work on article for Allegheny News.

**Education Endowment Fund (R. Billingham):** There is currently \$5,248.48 available for projects. If you have an idea for an educational project, do not hesitate to submit it for possible funding.

**Forest Science Coordinator (M. Fajvan):** The first fundraiser for the SAF Science Fund at the National Convention raised \$600+, which was considered successful for the first try. NE SAF wanted a science fund photo contest and asked Fajvan for advice, so this is becoming a model that others can adopt. If state or local societies want to raise money for the Science Fund, they can feel free to have raffles or silent auctions or other fundraisers to benefit it. We can add the Science Fund to the section of the operations manual that deals with meeting arrangement.

**Membership (K. Gottschalk):** ANSAF membership in 2007 so far is 1061, which is 5 more than the 2007 goal. However, 267 members have not yet renewed their dues. In 2006, we had our lowest purge numbers. If we subtract 100 at the June purge, our numbers will be around 961. Note that 39% of our membership has between one and nine years of membership. Industry has the largest percentage of members, followed by retirees, then student members (which needs retention work), then consultants, then state employees, then federal employees, then University employees, and finally TIMOs. Professional members represent 78% of our membership. We are currently 95% white/Caucasian and 13% female. ANSAF added 4 new members and 4 members that transferred in (comparing Jan. to Jan.). This year's Golden Members are: John H. Kitch; Charles J. Newlon, CF; David L. Posca, CF; David L. Steward; Raymond J. Stralka; and Anson E. Wright.

**Nominations (K. Jolly):** This is an election year. We need a chair elect, executive committee members, and a secretary/treasurer. Let Jolly know if you have a good candidate(s).

**Program (N. Karger):**

Winter 07: MD-DE  
Summer 07: New Jersey  
Winter 08: Keystone  
Summer 08: Gateway  
Winter 09: Rothrock  
Summer 09: Northern Hardwood  
Winter 10: West Virginia

Karger is looking for volunteers for 2011. If no volunteers step up, the next meeting will go to the Pinchot or Plateau Chapters. F. Hennion gave an update on the planning for the upcoming summer meeting, which is in NJ and will focus on Urban and Community Forestry and forest health. The meeting will be Aug 14-16 at The Holiday Inn at East Winter, exit 8 off the NJ Turnpike. They are offering all-day field trips on Wednesday with lunch included. There will also be time spent at the Forestry Education Center. There will be a pig roast at the end of the day. NJ SAF is hoping to use this meeting to bring in foresters that are currently working in arboriculture and to encourage them to become SAF members. Paper notices will go out sometime in June.

**Quiz Bowl (S. Resh):** The 20<sup>th</sup> one is coming up at this meeting. We should have two PSU teams and an Allegany College team.

**OLD BUSINESS:**

**Revision of Operations Manual (K. Steiner and K. Jolly):** This document consists of ANSAF bylaws, committee charters, calendar of events, former chairs, fellows, and a list of where all meetings were held. The last iteration was done by M. Webb. K. Jolly has it all electronically transcribed and is working on updates. The meeting guidelines will be incorporated into this document. We will also add position descriptions for each of the executive officers. NYSAF has put their manual on CD, and they have added an SAF organizational chart, which is helpful, especially for new chairs. This document will be helpful for new committees. The group then went over each committee charter, reviewing the suggested changes and making additional suggestions. The bulk of the changes were grammatical or were added for ease of reading or updating of language. The more significant changes were as follows: the Awards Committee had a change in deadlines; the Communications Committee will prepare a 5-year communication plan, compile success stories from the divisions and chapters, help execute the National Communication Plan, and create an adaptable pro-forestry power point presentation that emphasizes our region; the Forester's Fund Committee was abolished because its function is completed by the local divisions/chapters as they work on the ANSAF meetings; The Reginald Forbes Art Contest has changed from giving dollar awards to giving ribbons and certificates; the Student Member Coordinating Committee was abolished, as it is duplicating the efforts of the Quiz Bowl Coordinator; a charter was added describing the duties of the Quiz Bowl Coordinator. These changes were all approved. The motion was made by M. Webb, and seconded by N. Karger. Note that the guidelines for Annual ANSAF Meetings will become part of the operations manual. N. Karger received suggestions and incorporated them. He will add the Science Fund to the options under fundraisers and will add the ANSAF tax id number and that a meeting is expected to make a minimum donation of \$1,500 to the ANSAF.

**ANSAF Web Page (J. Perdue):** Perdue registered [www.AlleghenySAF.org](http://www.AlleghenySAF.org) as a domain. It is currently up and running, but is still a work in progress. Perdue set the site up with Yahoo, so it will be easy to transfer to the next webmaster when the time comes. The cost is approximately \$12 per month. The system has 5 gigs of service space (200 gigs of data transfer per month) and has 5 email accounts if we need them. Perdue is going to put out an Internet usage survey to the meeting attendees. This will help direct us in the future as to what should/could go out via internet. The survey will also be printed in the *Allegheny News* and then it will be returned with the ballot. Goals for the website are access, simplicity, and aesthetics. Content is key to the website maintenance. Perhaps chapter/division chairs could be contacts for Perdue, as well as the Communications Committee. Each division/chapter can have a page if they would like. Steiner suggested putting up pdfs of the ANews. Please look at the site and give Perdue feedback.

Steiner suggested creating a charter for the webmaster. Perdue needs to send an invoice to R. Billingham to be reimbursed for website costs.

**Allegheny News Review Committee (K. Jolly and J. Perdue):** This committee has suggested several solutions to our Newsletter conundrum: 1. Continue status quo: print four issues of the Newsletter and risk going into deficit spending. R. Billingham mentioned that she has heard of the option of having the National Office do the printing of the Newsletter and then mailing it out with an issue of The Source. 2. Reducing to three printed issues per year (with no electronic issues) 3. Reduce print issues to three or two, and then do an additional one or two Newsletters electronically 4. Eliminate printed publishing and go 100% electronic. There was a motion by B. Elison to move to two printed issues and two electronic issues, with the winter and summer issues being the electronic issues, and the spring and fall being print issues. This motion was seconded by M. Webb. We need to discover why people are dropping membership; find out if there is any correlation to the Newsletter. Note that the ACF has changed to one print issue with the rest electronic and the membership has not gone down and has in fact increased. We need to investigate the National Office printing scenario. For electronic issues, we will not sacrifice quality. They will be the same as the printed issues, but will be pdf documents. All printed issues should be available on the internet. Steiner will write an article on what is happening. The motion passed. Note that since the winter issue has already been printed, 2007 will have three print issues and one electronic issue.

**Biomass Resolution (K. Steiner):** ANSAF approved the Biomass Resolution. It was sent out to the five governors on May 25, 2006 and was copied to all the state foresters. A reply was received only from the governor of NJ.

**District VII Fellows Committee (K. Steiner):** This group has been at work and this charter will be added to the operations manual.

#### NEW BUSINESS:

**Review and Approval of the 2007 ANSAF Budget (R. Billingham):** – Billingham presented the budget. We currently have a bit of a surplus, due to the receipt of \$10,000 from the National Office for hosting the National Convention in 2006. Billingham will revise this budget to include the changes to the Allegheny News printing. K. Jolly discussed the possibility of increasing the executive director stipend. M. Webb made a motion to raise stipend of exec director to \$7,700, seconded by Jolly and passed by the group. K. Gottschalk made a motion to put the \$10,000 minus the Convention expenses into a reserve fund for operations that would be disbursed by decision of the Executive Committee; this was seconded by Fjavan. The motion passed. The revised budget is depicted below:

#### Projected Income:

	<u>Projection</u>	<u>Actual Received as of 2/13/07</u>
2007 Dues	\$12,245.00	\$ 7,186.00
Section Meetings	\$ 1,500.00 - \$ 3,000.00	\$ 0.00
Newsletter Contributions	\$ 500.00 - \$ 1,000.00	\$ 0.00
Voluntary Contributions	\$ 100.00 - \$ 1,000.00	\$ 0.00
Totals:	\$14,345.00 - \$17,245.00	\$ 7,186.00

#### Projected Expenses:

	<u>Projection</u>	<u>Actual Expenses as of 2/13/07</u>
HSD Assessment	\$ 505.25	\$ 0.00
Allegheny News	\$ 6,500.00	\$ 2,149.00
Exec. Director Stipend/Expenses	\$ 7,700.00	\$ 1,680.00
Chair Nat. Convention Expenses	\$ 0.00 - \$1,000.00	\$ 0.00
Student Travel	\$ 900.00	\$ 0.00
Awards	\$ 200.00	\$ 0.00
Website	\$ 144.00	\$ 0.00
Administrative	\$ 200.00	\$ 0.00
Totals:	\$16,005.25 - \$17,005.25	\$ 3,829.00

**Forester's Fund Proposal from West Virginia (K. Steiner):** The group reviewed this proposal ahead of time. M. Webb moved that we support this project, seconded by K. Gottschalk. This will now be sent to the National Office

#### **DIVISION/CHAPTER REPORTS:**

**Maryland/Delaware (M. Huneke):** They had a successful meeting in December, with 40 people in attendance. The topic was the Chesapeake Bay and the Governor's Task Force on Sustainability. They are planning another meeting for the spring. Thanks for coming to this meeting

**New Jersey (F. Hennion):** They currently have 103 members. Last year, they offered several workshops on subjects such as the NJ Highlands and woodland managers. Their annual meeting had 50 attendees. They are currently working on the summer meeting and on an educational facility in north NJ which could appeal to 12 million people.

**Pennsylvania Division (B. Elison):** The PA Division sponsored workshops on woodburning plants for schools. There are several that have been built and a few more are in the works. It could be that their workshops helped this happen.

**West Virginia (K. Gottschalk):** Had their winter meeting last week. They recently sent a survey to members on how they can better meet their needs

**Keystone (R. Billingham):** Keystone Executive Committee met last week and set up three meetings for this year. They are also preparing to host next year's winter meeting in either Gettysburg, Carlisle, Harrisburg, or Hershey. A survey will be handed out at this meeting to get people's input on what they would like to hear about. The survey will also be sent out to the listserv.

**Northern Hardwoods (N. Karger):** T Pierson has a spring meeting scheduled regarding butternut.

**Pinchot (B. Elison):** They have a meeting coming up in June.

**Plateau (A. Ayers):** They had a meeting in January and there's a walk in the forest scheduled for spring.

**Valley Forge (J. Stuffle):** This chapter had four meetings last year, and are planning on four meetings for this year.

The meeting was adjourned at 6:20 p.m.

## **Allegheny Society of American Foresters General Business Meeting Minutes of February 15, 2007**

Brief reports were given of all information discussed in the Executive Committee meeting on February 13.

In the discussion on the Membership proposals, a discussion ensued regarding the issue of family membership, which would apply to families in which the husband and wife are both foresters. M. Webb made a motion that M. Coulombe raise the issue at the next Council meeting of creating a membership category that would cover a situation where a husband and wife are both foresters. This motion was seconded by J. Winieski and was passed by the group.

In the discussion of the website, it was mentioned that the National website links to our old site. We need to make sure that those links are changed to [alleghenysaf.org](http://alleghenysaf.org). We should also consider asking our current advertisers if they would like to advertise on our website. Be sure to get your Fellows nominations in to the committee by April.

S. Resh gave a thank-you to the ANSAF for sending his Allegheny College Quiz Bowl team to the National Convention in Pittsburgh. It was a great experience for them.

T. Clark reminded everyone to think about who they could nominate for a national award. They are due by the end of February.

M. Webb encouraged everyone to take a look at the ANSAF committees and consider serving on one.

The meeting was adjourned at 8:25a.m.

# Allegheny SAF 2007 Summer Meeting

The National Conference Center @ The Holiday Inn, East Windsor, NJ August 14 – 16, 2007  
*Community Forestry: Diverse Opportunities and Challenges for Everyone*  
CFE Credits - TBD

## Tuesday, August 14, 2007

Noon – 7:00 PM Registration Open  
Allegheny Executive Committee Meeting  
7:00 – 9:00 PM Ice Breaker Reception – Cash Bar

## Wednesday, August 15, 2007

8:00 AM Registration Open  
8:00 – 9:00 AM Continental Breakfast  
**Field Tours**  
9:15 AM Leave Conference Center via Bus  
9:30 – 10:30 AM Oak Bacteria Leaf Scorch Site Tour – Cranberry, NJ  
10:45 – 12:30 PM Rex Lumber, Secondary Wood Processor Tour – Manalapan, NJ  
Box Lunch while at Rex Lumber  
1:00 – 1:45 PM Tree City Tour – Manalapan, NJ  
2:15 – 3:30 PM Halka Nursery- Digging Big Trees Tour – Englishtown, NJ  
4:15 – 5:15 PM Return to Hotel to Freshen Up  
5:45 – 8:30 PM NJ Forest Resource Education Center and Nursery Tour – Jackson, NJ  
Evening Pig Roast & Barbeque (vegetarian meal upon request)  
NJD SAF Silent Auction

### **Tour Options while at education center**

1. Arborist Demonstration and State of the Art Technology  
2. NJ Forest Service Forest Nursery  
3. NJ Forest Service, Forest Resource Education Center  
8:45 – 9:00 PM Return to Hotel

## Thursday, August 16, 2007

8:00 – 9:00 AM Continental Breakfast  
**Technical Presentations**  
9:00 – 9:30 AM The Forests of New Jersey – James Barresi, New Jersey State Forester  
9:30 – 9:45 AM New Jersey Forest Health Council Presentation - TBA  
9:45 – 10:30 AM Asian Longhorn Beetle Presentation – Rosa Yoo, NJ Forest Service  
10:30 – 10:45 AM Break  
10:45 – 11:30 AM Cool Cities Initiative – Mary Ferraro, NJ Forest Service  
11:30 – 12:00 PM Community Forestry in New Jersey – Dave Johnson, NJ Forest Service  
Opportunities for Consulting Foresters  
12:00 – 1:00 PM Conference Luncheon  
1:00 PM Adjourn

**Reservations:** Please Call the Holiday Inn @ 609-443-8000 to reserve rooms. Rooms are reserved under the Group Name "Society of American Foresters." Block lodging rate: \$109/ night plus taxes.

Meeting cost will be determined at a later time.



# NJ SAF and the Lusscroft Farm

Adapted from an article by Mark Vodak in the NJ forest "Stewardship Leaves" newsletter

The New Jersey Division of SAF has been asked to participate in the planning process for the future of Lusscroft Farm. SAF members met on the property to begin the recommendation process for the best uses of the farm and woodlots. The NJSAF Lusscroft planning group included Mark Vodak, Les Alpaugh, Frank Hennion, Charlie Newlon, George Pierson, Ron Sheay, and Doug Tavella.

The 578-acre Lusscroft Farm is located in the NE corner of New Jersey next to Stokes State Park and High Point State Park. The farm includes 300 acres of woodlands. Lusscroft has an interesting past. It was a state-of-the-art dairy farm established in 1914 by James Turner, a successful stockbroker. In 1931, the farm including its manor house, chestnut timber lodge, and barns was donated to the State of New Jersey. The State assigned the administration to Rutgers University in 1933, and Rutgers turned it into a leading research farm including the development of artificial insemination for dairy herds.

Cook College of Rutgers established its forestry program there in 1955 using the farm's facilities and forests for education and research. In 1970 Rutgers closed the research station and it soon it became the 4-H Youth Center for Outdoor Education. An active forest management program was re-established in the 1990s. The program included a forest stewardship plan, demonstration harvests and thinnings, a sugarbush, and an interpretive trail. The 4-H Camp closed in 1996 and in 2002 the State transferred the

administration of Lusscroft to the NJ Department of Environmental Protection, State Park Service and the State Agriculture Development Committee.

Today the New Jersey Division of Parks and Forestry is greatly interested in Lusscroft's potential. There is also a strong community interest in the property, and a Friend's Group, the Heritage and Agriculture Association, has been established to assist the state as it evaluates the potential missions, goals, directions, and alternatives.

The NJSAF Lusscroft planning group is especially interested in updating the Forest Stewardship plan, and the potential for demonstration forest areas, an active sugarbush, a working sawmill, a solar kiln operation, on-site wood crafters, interpretive trails, and forestry education programs. ❁



The lodge, built of chestnut timbers, is high above Lusscroft farm and forest headquarters (photo by Charlie Newlon)



NJSAF members begin planning for Lusscroft's potential as a forestry demonstration and education center (photo by Charlie Newlon)



Evaluating for the Lusscroft forest stewardship plan (photo by Charlie Newlon)

# Penn State Mont Alto Forestry Reunion and Schatz Tree Genetics Colloquium

Mark your calendars for the Penn State Mont Alto Forestry Reunion, "Where Our Careers Began" which is scheduled for April 29-May 1, 2007. The Mont Alto celebration immediately follows the School of Forest Resources' 100<sup>th</sup> Anniversary celebration in University Park, Pennsylvania. Alumni can spend a few days in University Park, and then travel to Mont Alto to participate in both reunions.

An arboretum ceremony and forester's pig roast on April 29 plus "back to class" with instructor and student presentations on April 30 is a chance to reminisce, reunite and make new Mont Alto memories.

This First Schatz Tree Genetics Colloquium brings together genetics researchers and practitioners from around the country to review in depth, the state-of-the-science in beech, butternut, American chestnut, and oak genetics research and application.

Louis W. Schatz, a 1934 alumnus of Penn State Mont Alto, endowed the Colloquium with the purpose of reviewing the science of advanced tree genetics, proposing the most promising avenues of future research, and considering joint research efforts in problem solving.

For more information contact the Office of Alumni Relations at 717-749-6110, or visit the website at [www.ma.psu.edu](http://www.ma.psu.edu), or via email at [dke10@psu.edu](mailto:dke10@psu.edu).

## Come to Portland, Oregon for the 2007 SAF National Convention October 23-27

Join 2,000 forestry and natural resource professionals to exchange ideas, share professional expertise, and learn the latest technologies and research to help you work more effectively.



Choose from more than 150 sessions and events!  
Visit [www.safconvention.org](http://www.safconvention.org) for more convention highlights.



## THE NELSON PAINT COMPANY

From the first name in forestry paint - Nelson Paint has been making high quality forestry paints and products for over 60 years.

### Nelson Paint and Equipment offer:

- Vibrant, non-absorbing colors
- Easy application with Nel-Spot gun
- Long-term and short-term marks

## BUY FACTORY DIRECT

at

1-800-236-9278

or online at

[www.nelsonpaint.com](http://www.nelsonpaint.com)

# Silviculture News

By Mary Ann Fajvan, Forest Science Coordinator

## Emerald Ash Borer: Education and Enforcement

The emerald ash borer (*Agrilus planipennis* Fairmaire) is an exotic beetle from Asia first discovered in Michigan in 2002. Since that time the insect has spread to Ohio, Indiana, Illinois and Windsor, Ontario covering approximately 40,000 square miles. Infested nursery trees were shipped to a nursery in the Maryland suburbs in April 2003 and also to Virginia. As of November 2005, an estimated 15 million trees had already been killed and infestations and mortality are expected to continue indefinitely. The bright green adult beetles are larger than the native North American species of *Agrilus* and cause minor damage to trees through foliar feeding. However, the larval stage of the insect feeds on phloem and outer sapwood of all 16 native ash species (and some ornamental varieties). The feeding interrupts nutrient and water transport within a tree, causing a girdling effect resulting in canopy wilt and dieback. Typically trees lose 30–50% of their foliage within two years and mortality occurs after 3–4 years of infestation.

The biological characteristics of the EAB greatly affect management efforts to control the insect. There is a lag time of at least one year between a tree being attacked and subsequent evidence of decline symptoms. Adults emerge in early summer and live for about three weeks. During that time they can mate multiple times and lay 60–90 eggs during their lifetime. Eggs are deposited in bark crevices and hatch in 7–10 days. Larvae chew through the bark into the cambium excavating feeding galleries until the fall when it over-winters until pupation begins in late April or May. Emergence is evident from the D-shaped exit holes in the bark. Mated females are capable of flying several miles or some research suggests, up to 6 miles.

Federal and state agencies have placed restrictions on the movement of potentially infested material, such as nursery plants and firewood. They have also implemented public education campaigns to express the need to refrain from activities that could spread EAB. However, quarantines are difficult to establish and enforce and have not completely stopped EAB movement.

Eradication strategies focus on the removal of all ash trees within a 1.5 mile radius of each infested ash trees (eradication zone). Stumps are treated to prevent sprouting and the bole and branches are then chipped to a size of less than one inch in any two directions. However, no one really knows where to stop cutting to get beyond the borer's flight range nor is there any



certainty that chipping wood to 1-inch pieces destroys all borers. Significant reductions in federal funding in FY 2005 and 2006 have hampered ash tree removals, reduced enforcement of quarantines and reduced research budgets. Research efforts are focused on gaining a better understanding of EAB biology to try and determine how flying adults detect ash trees in the landscape.

Controversial discussions are ongoing regarding the wisdom of pre-emptive removals of healthy ash trees within and near eradication zones. Removal of contaminated ash material outside of eradication zones is possibly a bigger contributor to EAB spread. Therefore, Canada, Indiana, Michigan and Ohio have stopped most eradication cuts partly because of a low success rate with this technique and probably also due to reduced funding to pay for removals. Not everyone is pessimistic about the fate of the ash resource, however. Some experts hope that once ecology of the insect is better understood, a “slow the spread” program similar to that used for gypsy moth control, could be implemented. In the meantime, funding must be directed to public education and enforcement of government quarantines to slow the artificial spread of EAB. ❧

For more information on emerald ash borer biology and management:

[www.emeraldashborer.info](http://www.emeraldashborer.info)

(Michigan multi-agency EAB website)

[www.ohioagriculture.gov/eab](http://www.ohioagriculture.gov/eab) (EAB in Ohio)

[www.mda.state.ma.us/plants-pests/eab](http://www.mda.state.ma.us/plants-pests/eab) (EAB in Maryland)

[www.gao.gov/cgi-bin/getrpt?GAO-06-353](http://www.gao.gov/cgi-bin/getrpt?GAO-06-353)

(US GAO report: Invasive forests pests: Lesson learned from three recent infestations may aid in managing future efforts)

## Coming Events

March 29 -

April 1 Penn State Mont Alto Forestry Reunion & Schatz Tree Genetics Colloquium, Mont Alto, PA. Visit [www.ma.psu.edu](http://www.ma.psu.edu) (see page 25)

May  
20-23

North American Forest Biology Workshop, "Future Forests: Emerging Physiological and Genetic Technologies," Bloomington, IN. [www.fnr.purdue.edu/nafb2007](http://www.fnr.purdue.edu/nafb2007)

June  
15

Deadline for articles and photos for the Summer 2007 issue of *The Allegheny News*. Send articles and photos in JPG format to editor Jack at [ansaf@verizon.net](mailto:ansaf@verizon.net)

August  
14-16

Allegheny SAF 2007 Summer Meeting "Forestry is Diversity, Opportunity, and a Challenge: Community Forestry - Uniting Old & New Ideas, Initiatives." See page 23 for program details.

September  
15

Deadline for articles and photos for the Fall 2007 *Allegheny News*

October  
23-27

SAF National Convention, "Sustaining America's Forests," Portland, OR. Mark your calendars now, and watch your mail for registration information!

December  
15

Deadline for articles and photos for the Winter 2007-08 issue of *The Allegheny News*

### Future Allegheny SAF Meetings

Summer 2007 - NJ Division  
Winter 2008 - Keystone Chapter

### Future SAF National Conventions

2007 - Portland, OR, October 23-27  
2008 - Reno, NV, November 5-7

## Allegheny SAF Committee Chairs

### Auditing

Ronald J. Sheay  
12 Glenwood Lane  
Stockton, NJ 08559  
(h) 609-397-7886  
[revdrvirginias@aol.com](mailto:revdrvirginias@aol.com)

### Awards

Howard G. Wurzbacher  
17374 N. Main Street Ext.  
Titusville, PA 16354  
(o) 814-484-9954  
(h) 814-589-7538  
[hwurzbache@state.pa.us](mailto:hwurzbache@state.pa.us)

### Communications

Ronald R. Farr, CF  
6 Ricker Road  
Newfoundland, NJ 07435  
(o) 973-831-3358  
(h) 973-208-8165  
[rfarr@njdwsc.com](mailto:rfarr@njdwsc.com)

### Continuing Forestry Education Coordinator

Mark Vodak  
Cook Campus, Rutgers  
80 Nichol Avenue  
New Brunswick, NJ 08901  
(o) 732-932-8993 x10  
(h) 609-758-9449  
[vodak@aesop.rutgers.edu](mailto:vodak@aesop.rutgers.edu)

### Education

Mark R. Webb  
11021 Route 6  
Union City, PA 16438  
(o/h) 814-663-5393  
(f) 814-663-4008  
[mrkrwebb@earthlink.net](mailto:mrkrwebb@earthlink.net)

### Education Endowment Fund

Ronald J. Sheay  
12 Glenwood Lane  
Stockton, NJ 08559  
(h) 609-397-7886

### Forest History

Ronald J. Sheay  
12 Glenwood Lane  
Stockton, NJ 08559  
(h) 609-397-7886

### Forest Science Coordinator

Mary Ann Fajvan  
USFS NE Station  
180 Canfield Street  
Morgantown, WV 26505  
(o) 304-285-1575  
(h) 304-892-4515  
[mfajvan@fs.fed.us](mailto:mfajvan@fs.fed.us)

### Membership

Kurt W. Gottschalk  
180 Canfield Street  
Morgantown, WV 26505  
(o/h) 724-627-4161  
(f) 724-627-8540  
[kwgottschalk@greenepa.net](mailto:kwgottschalk@greenepa.net)

### Nominations

Kenneth W. Jolly  
6 Landings Court  
Annapolis, MD 21403  
(o) 410-260-8502  
(h) 410-263-1989  
(f) 410-260-8596  
[kjolly@dnr.state.md.us](mailto:kjolly@dnr.state.md.us)

### Policy & Legislative (PLAN)

Timothy A. Kaden  
724 Green Winged Trail  
Camden, DE 19934  
(o) 302-739-4811  
(h) 302-697-7066  
[timothy.kaden@state.de.us](mailto:timothy.kaden@state.de.us)

### Program

Ned R. Karger  
409 W. Hemlock Avenue  
Kane, PA 16735  
(o) 814-837-6941 ext. 21  
(h) 814-837-6819  
(f) 814-837-7506  
[nkarger@collinsco.com](mailto:nkarger@collinsco.com)

### Student Quiz Bowl

Steven F. Resh  
Allegheny College of MD  
12401 Willowbrook Road  
Cumberland, MD 21502  
(o) 301-784-5307  
(h) 301-772-2834  
[sresh@allegheny.edu](mailto:sresh@allegheny.edu)

### Tellers

Susan L. Stout  
US Forest Service  
PO Box 267  
Irvine, PA 16329  
(o) 814-563-1040  
(h) 814-726-2023  
[sstout@fs.fed.us](mailto:ssstout@fs.fed.us)

The next newsletter  
deadline is June 15th  
Send articles in Microsoft  
Word format and photos  
as JPG files to editor  
Jack Winieski at  
[ansaf@verizon.net](mailto:ansaf@verizon.net)

# Allegheny Society of American Foresters

## Officers

**Chairman**  
Kim C. Steiner  
104 Ferguson Building  
Penn State University  
University Park, PA 16802  
(o) 814-865-9351  
kcs@psu.edu

**Chairman-Elect**  
Kurt Gottschalk  
180 Canfield Street  
Morgantown, WV 26505  
(o) 724-627-4161  
(h) 724-627-4161  
(f) 724-627-8540  
kwgottschalk@greenepa.net

**Secretary/Treasurer**  
Rachel R. Billingham  
95 Black Walnut Drive  
Errters, PA 17319  
(o) 717-783-0385  
(h) 717-932-4802  
(f) 717-783-5109  
rbillingha@state.pa.us

**Past Chairman**  
Kenneth W. Jolly  
6 Landings Court  
Annapolis, MD 21403  
(o) 410-260-8502  
(h) 410-263-1989  
(f) 410-260-8596  
kjolly@dnr.state.md.us

## Executive Committee

Mary Ann Fajvan  
180 Canfield Street  
Morgantown, WV 26505  
(o) 304-285-1575  
(h) 304-892-4515  
mfajvan@fs.fed.us

Ned R. Karger  
409 W. Hemlock Avenue  
Kane, PA 16735  
(o) 814-837-0121  
(h) 814-837-6819  
(f) 814-837-7506  
nkarger@collinsco.com

Mark C. Vodak  
Cook Campus, Rutgers  
80 Nichol Avenue  
New Brunswick, NJ 08901  
(o) 732-932-8993 x10  
(h) 609-758-9449  
vodak@aesop.rutgers.edu

Roy A. Siefert  
114 Ally Close Hill Road  
Middlebury Center, PA 16935  
(o) 570-724-2868  
(h) 570-376-2951  
(f) 570-724-6575  
rsiefert@state.pa.us

## Executive Director

Jack Winieski  
PO Box 699  
Dillsburg, PA 17019-0699  
(o/f) 717-432-3646  
ansaf@verizon.net

## Council Representative

Mary J. Coulombe  
1111 19th Street NW, Suite 800  
Washington, DC 20036  
(o) 202-761-1228  
(h) 703-980-2122  
mary.j.coulombe@usace.army.mil

---

## Division Chairs

**Maryland/Delaware**  
Michael J. Huneke  
3070-A Whiteford Road  
Pylesville, MD 21132  
(o) 410-836-4579  
mhuneke@dnr.state.md.us

**New Jersey**  
Francis (Frank) Hennion  
145 Davis Road  
Franklin, NJ 07416  
(o) 973-827-1325  
mandfhen@aol.com

**Pennsylvania**  
Bradley W. Elison  
69 Valley View Drive  
Factoryville, PA 18419  
(o) 570-963-4561  
(h) 570-586-2032  
(f) 570-963-3048  
belison@state.pa.us

**West Virginia**  
Mary Beth Adams  
USDA Forest Service  
PO Box 404  
Parsons, WV 26287  
(o) 304-478-2000 x130  
(f) 304-478-8692  
mbadams@fs.fed.us

## Chapter Chairs

**Keystone**  
Michael J. Kusko, Jr. CF  
410 Starr Avenue  
Chambersburg, PA 17201  
(o) 717-352-2211  
(h) 717-263-8030  
(f) 717-352-3007  
mkusko@state.pa.us

**Northern Hardwood**  
Timothy G. Pierson  
PO Box 1504  
Smethport, PA 16749-0504  
(o) 814-887-5613  
tgp2@psu.edu

**Pinchot**  
Nicholas Lylo  
281 Lehigh Street  
Wilkes-Barre, PA 18702  
(o) 570-963-4563  
nlylo@state.pa.us

**Plateau**  
Scott Seibert  
2370 Raymilton Road  
Utica, PA 16362  
(o) 724-376-7463  
bigtree1@earthlink.net

**Rothrock**  
Marc McDill  
906 S. Sparks Street  
State College, PA 16801  
(o) 814-865-1602  
(f) 814-865-3725  
mem14@psu.edu

**Valley Forge**  
Michael L. Hoppus  
523 Idlewood Circle  
Media, PA 19063  
(o) 610-557-4039  
(h) 610-566-1233  
mhoppus@fs.fed.us

**Western Gateway**  
Robert Piper, Jr.  
401 Candlelight Dr., Suite 221  
Ebensburg, PA 15931  
(o) 814-472-2120  
(f) 814-472-0686  
piper@co.cambria.pa.us